

Anti-ATG16L1 antibody ab188642

[7 References](#) [5 图像](#)

概述

产品名称	Anti-ATG16L1抗体
描述	兔多克隆抗体to ATG16L1
宿主	Rabbit
经测试应用	适用于: ELISA, ICC/IF, WB, IHC-P
种属反应性	与反应: Mouse, Rat, Human
免疫原	Synthetic peptide corresponding to Human ATG16L1 (internal sequence). 18 amino acids. Database link: Q676U5

常规说明

The Life Science industry has been in the grips of a reproducibility crisis for a number of years. Abcam is leading the way in addressing this with our range of recombinant monoclonal antibodies and knockout edited cell lines for gold-standard validation. Please check that this product meets your needs before purchasing.

If you have any questions, special requirements or concerns, please send us an inquiry and/or contact our Support team ahead of purchase. Recommended alternatives for this product can be found below, along with publications, customer reviews and Q&As

性能

形式	Liquid
存放说明	Shipped at 4°C. Store at +4°C short term (1-2 weeks). Upon delivery aliquot. Store at -20°C long term. Avoid freeze / thaw cycle.
存储溶液	pH: 7.4 Preservative: 0.02% Sodium azide Constituent: 99% PBS
纯度	Immunogen affinity purified
克隆	多克隆
同种型	IgG

应用

The Abpromise guarantee

Abpromise™ 承诺保证使用ab188642于以下的经测试应用

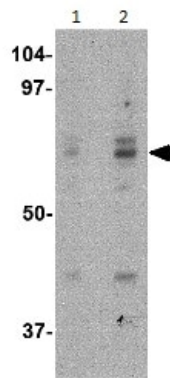
“应用说明”部分 下显示的仅为推荐的起始稀释度;实际最佳的稀释度/浓度应由使用者检定。

应用	Ab评论	说明
ELISA		Use at an assay dependent concentration.
ICC/IF		Use a concentration of 2 - 4 µg/ml.
WB		Use a concentration of 0.25 - 0.5 µg/ml. Predicted molecular weight: 68 kDa.
IHC-P		Use a concentration of 5 µg/ml. Perform heat mediated antigen retrieval with citrate buffer pH 6 before commencing with IHC staining protocol.

靶标

功能	Plays an essential role in autophagy: interacts with ATG12-ATG5 to mediate the conjugation of phosphatidylethanolamine (PE) to LC3 (MAP1LC3A, MAP1LC3B or MAP1LC3C), to produce a membrane-bound activated form of LC3 named LC3-II. Thereby, controls the elongation of the nascent autophagosomal membrane.
疾病相关	Inflammatory bowel disease 10
序列相似性	Belongs to the WD repeat ATG16 family. Contains 7 WD repeats.
翻译后修饰	Proteolytic cleavage by activated CASP3 leads to degradation and may regulate autophagy upon cellular stress and apoptotic stimuli.
细胞定位	Cytoplasm. Preautophagosomal structure membrane. Recruited to omegasomes membranes by WIPI2. Omegasomes are endoplasmic reticulum connected structures at the origin of preautophagosomal structures. Localized to preautophagosomal structure (PAS) where it is involved in the membrane targeting of ATG5. Localizes also to discrete punctae along the ciliary axoneme.
形式	There are 4 isoforms produced by alternative splicing.

图片



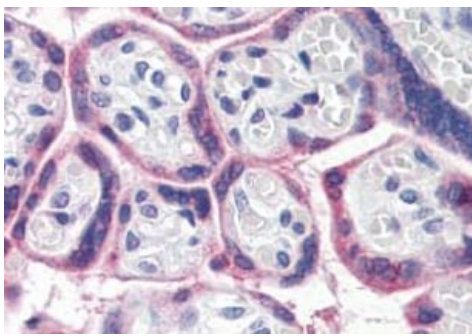
Western blot - Anti-ATG16L1 antibody (ab188642)

Lane 1 : Anti-ATG16L1 antibody (ab188642) at 0.25 µg/ml

Lane 2 : Anti-ATG16L1 antibody (ab188642) at 0.5 µg/ml

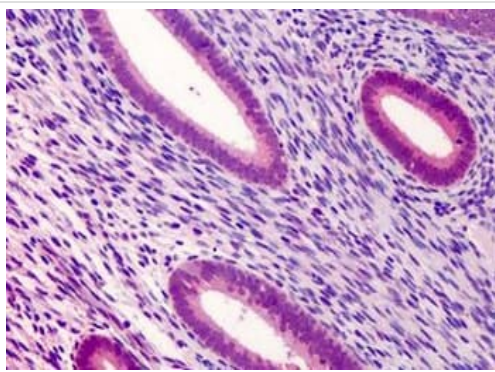
All lanes : HeLa cell lysate

Predicted band size: 68 kDa



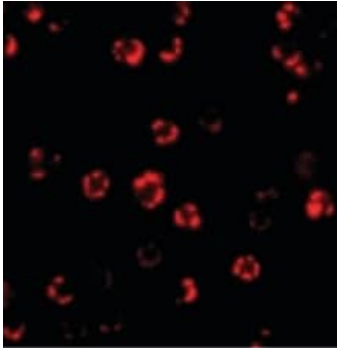
Immunohistochemistry (Formalin/PFA-fixed paraffin-embedded sections) - Anti-ATG16L1 antibody (ab188642)

Immunohistochemical analysis of formalin-fixed, paraffin-embedded Human placenta tissue sections labeling ATG16L1 using ab188642 at 5 µg/ml.



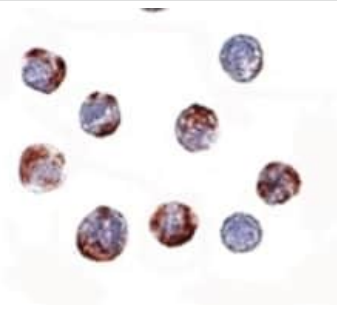
Immunohistochemistry (Formalin/PFA-fixed paraffin-embedded sections) - Anti-ATG16L1 antibody (ab188642)

Immunohistochemical analysis of formalin-fixed, paraffin-embedded Human uterus tissue sections labeling ATG16L1 using ab188642 at 5 µg/ml.



Immunocytochemical/ Immunofluorescence analysis of HeLa cells labeling ATG16L1 using ab188642 at 4 µg/ml.

Immunocytochemistry/ Immunofluorescence - Anti-ATG16L1 antibody (ab188642)



Immunocytochemical analysis of HeLa cells labeling ATG16L1 using ab188642 at 2 µg/ml.

Immunocytochemistry/ Immunofluorescence - Anti-ATG16L1 antibody (ab188642)

Please note: All products are "FOR RESEARCH USE ONLY. NOT FOR USE IN DIAGNOSTIC PROCEDURES"

Our Abpromise to you: Quality guaranteed and expert technical support

- Replacement or refund for products not performing as stated on the datasheet
- Valid for 12 months from date of delivery
- Response to your inquiry within 24 hours

- We provide support in Chinese, English, French, German, Japanese and Spanish
- Extensive multi-media technical resources to help you
- We investigate all quality concerns to ensure our products perform to the highest standards

If the product does not perform as described on this datasheet, we will offer a refund or replacement. For full details of the Abpromise, please visit <https://www.abcam.cn/abpromise> or contact our technical team.

Terms and conditions

- Guarantee only valid for products bought direct from Abcam or one of our authorized distributors