

Anti-ATG12 antibody ab155589

27 References **6 图像**

概述

产品名称	Anti-ATG12抗体
描述	兔多克隆抗体to ATG12
宿主	Rabbit
特异性	ab155589 detects free ATG12 and ATG12 conjugated to Atg5.
经测试应用	适用于: WB, IHC-P, ICC/IF
种属反应性	与反应: Mouse, Rat, Human
免疫原	Recombinant fragment within Human ATG12 aa 1-187. The exact sequence is proprietary.
阳性对照	293T, A431, NIH3T3 and Rat brain whole cell lysates; Human U87 xenograft tissue; HeLa cells untreated or treated with Tunicamycin.
常规说明	<p>The Life Science industry has been in the grips of a reproducibility crisis for a number of years. Abcam is leading the way in addressing this with our range of recombinant monoclonal antibodies and knockout edited cell lines for gold-standard validation. Please check that this product meets your needs before purchasing.</p> <p>If you have any questions, special requirements or concerns, please send us an inquiry and/or contact our Support team ahead of purchase. Recommended alternatives for this product can be found below, along with publications, customer reviews and Q&As</p>

性能

形式	Liquid
存放说明	Shipped at 4°C. Upon delivery aliquot. Store at -20°C or -80°C. Avoid freeze / thaw cycle.
存储溶液	<p>pH: 7.00</p> <p>Preservative: 0.025% Proclin 300</p> <p>Constituents: 79% PBS, 20% Glycerol (glycerin, glycerine)</p>
纯度	Immunogen affinity purified
克隆	多克隆
同种型	IgG

应用

The Abpromise guarantee Abpromise™承诺保证使用ab155589于以下的经测试应用

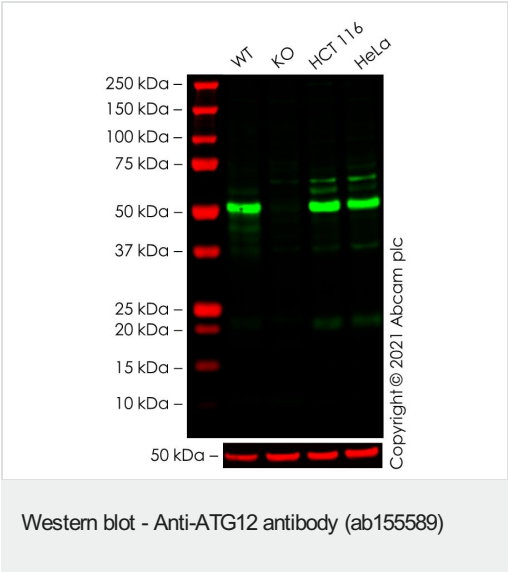
“应用说明”部分 下显示的仅为推荐的起始稀释度;实际最佳的稀释度/浓度应由使用者检定。

应用	Ab评论	说明
WB		1/500 - 1/3000. Predicted molecular weight: 15 kDa.
IHC-P		1/100 - 1/1000.
ICC/IF		1/100 - 1/1000.

靶标

功能	Ubiquitin-like protein required for autophagy. Conjugated to ATG3 and ATG5.
组织特异性	Ubiquitous.
序列相似性	Belongs to the ATG12 family.
结构域	Shares weak sequence similarity with ubiquitin family, but contains an 'ubiquitin superfold' and the C-terminal Gly is required for isopeptide linkage.
细胞定位	Cytoplasm.

图片



All lanes : Anti-ATG12 antibody (ab155589) at 1/500 dilution

- Lane 1 : Wild-type THP-1 cell lysate
- Lane 2 : ATG12 knockout THP-1 cell lysate
- Lane 3 : HCT 116 cell lysate
- Lane 4 : HeLa cell lysate

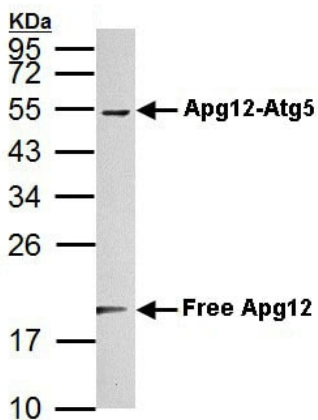
Lysates/proteins at 20 µg per lane.

Performed under reducing conditions.

Predicted band size: 15 kDa
Observed band size: 52 kDa

False colour image of Western blot: Anti-ATG12 antibody staining at 1/500 dilution, shown in green; Mouse anti-Alpha Tubulin [DM1A] ([ab7291](#)) loading control staining at 1/20000 dilution, shown in red. In Western blot, ab155589 was shown to bind specifically to ATG12. A band likely to be the unfunctional complex with ATG5 was observed at 52 kDa in wild-type THP-1 cell lysates with no signal

observed at this size in Atg12 knockout cell line **ab277831** (knockout cell lysate **ab278183**) - unconjugated functional form not observed at 15 kDa. To generate this image, wild-type and Atg12 knockout THP-1 cell lysates were analysed. First, samples were run on an SDS-PAGE gel then transferred onto a nitrocellulose membrane. Membranes were blocked in 3% milk in TBS-0.1 % Tween® 20 (TBS-T) before incubation with primary antibodies overnight at 4°C. Blots were washed four times in TBS-T, incubated with secondary antibodies for 1 h at room temperature, washed again four times then imaged. Secondary antibodies used were Goat anti-Rabbit IgG H&L (IRDye® 800CW) preabsorbed (**ab216773**) and Goat anti-Mouse IgG H&L (IRDye® 680RD) preabsorbed (**ab216776**) at 1/20000 dilution.

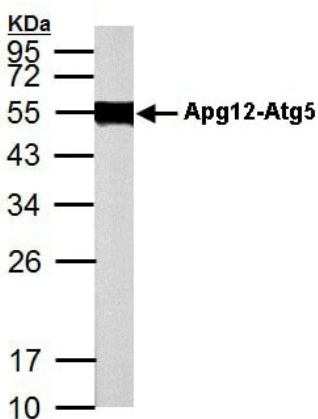


Western blot - Anti-ATG12 antibody (ab155589)

Anti-ATG12 antibody (ab155589) at 1/1000 dilution + NIH3T3 whole cell lysate at 30 µg

Predicted band size: 15 kDa

12% SDS PAGE

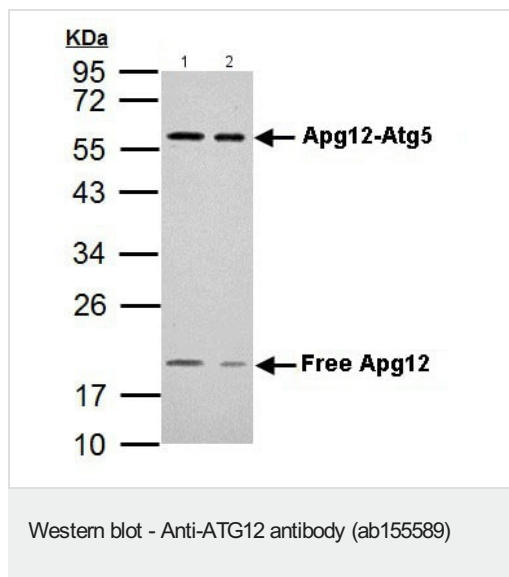


Western blot - Anti-ATG12 antibody (ab155589)

Anti-ATG12 antibody (ab155589) at 1/1000 dilution + Rat brain whole cell lysate at 50 µg

Predicted band size: 15 kDa

12% SDS PAGE



All lanes : Anti-ATG12 antibody (ab155589) at 1/1000 dilution

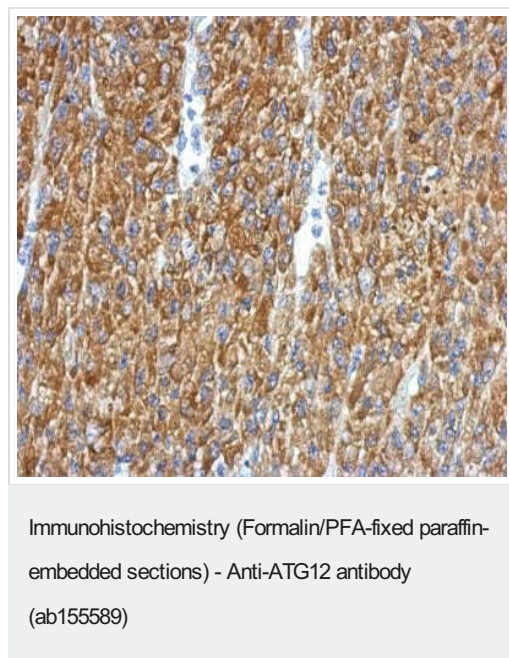
Lane 1 : 293T whole cell lysate

Lane 2 : A431 whole cell lysate

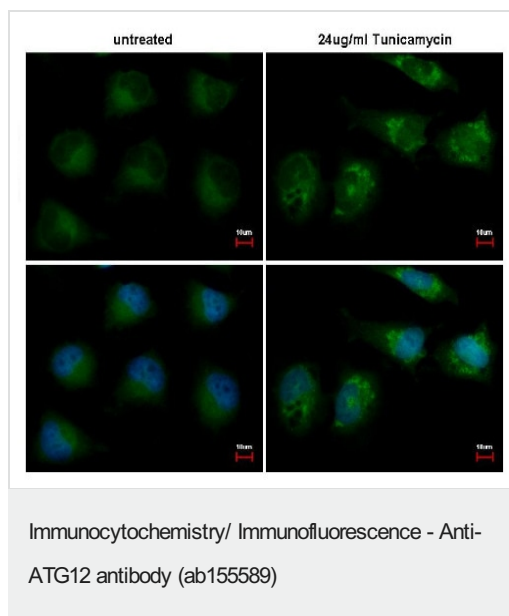
Lysates/proteins at 30 µg per lane.

Predicted band size: 15 kDa

12% SDS PAGE



Immunohistochemical analysis of paraffin-embedded U87 (human) xenograft tissue labeling ATG12 with ab155589 at 1/500 dilution.



Immunofluorescent analysis of paraformaldehyde-fixed HeLa cells labeling ATG12 with ab155589 at 1/500 dilution. Lower panels co-stained with Hoechst 33342.

Cells were fixed in 4% paraformaldehyde for 15 minutes.

Please note: All products are "FOR RESEARCH USE ONLY. NOT FOR USE IN DIAGNOSTIC PROCEDURES"

Our Abpromise to you: Quality guaranteed and expert technical support

- Replacement or refund for products not performing as stated on the datasheet
- Valid for 12 months from date of delivery
- Response to your inquiry within 24 hours
- We provide support in Chinese, English, French, German, Japanese and Spanish
- Extensive multi-media technical resources to help you
- We investigate all quality concerns to ensure our products perform to the highest standards

If the product does not perform as described on this datasheet, we will offer a refund or replacement. For full details of the Abpromise, please visit <https://www.abcam.cn/abpromise> or contact our technical team.

Terms and conditions

- Guarantee only valid for products bought direct from Abcam or one of our authorized distributors