

# Anti-ATF1 (phospho S63) antibody [EP1591(2)Y] ab76085

RabMAb

★★★★★ [1 Abreviews](#) [8 References](#) [2 图像](#)

## 概述

产品名称	Anti-ATF1 (phospho S63)抗体[EP1591(2)Y]
描述	兔单克隆抗体[EP1591(2)Y] to ATF1 (phospho S63)
宿主	Rabbit
经测试应用	<b>适用于:</b> WB, IHC-P <b>不适用于:</b> Flow Cyt or IP
种属反应性	<b>与反应:</b> Human <b>预测可用于:</b> Mouse, Rat 
免疫原	Synthetic peptide. This information is proprietary to Abcam and/or its suppliers.
阳性对照	WB: HeLa whole cell lysate ( <a href="#">ab150035</a> ) IHC-P: human breast carcinoma tissue
常规说明	Our RabMAb <sup>®</sup> technology is a patented hybridoma-based technology for making rabbit monoclonal antibodies. For details on our patents, please refer to <a href="#">RabMAb<sup>®</sup> patents</a> .  The Life Science industry has been in the grips of a reproducibility crisis for a number of years. Abcam is leading the way in addressing this with our range of recombinant monoclonal antibodies and knockout edited cell lines for gold-standard validation. Please check that this product meets your needs before purchasing.  If you have any questions, special requirements or concerns, please send us an inquiry and/or contact our Support team ahead of purchase. Recommended alternatives for this product can be found below, along with publications, customer reviews and Q&As

## 性能

形式	Liquid
存放说明	Shipped at 4°C. Upon delivery aliquot and store at -20°C. Avoid repeated freeze / thaw cycles.
存储溶液	pH: 7.20 Preservative: 0.05% Sodium azide Constituents: 0.1% BSA, 40% Glycerol (glycerin, glycerine), 9.85% Tris glycine, 50% Tissue culture supernatant
纯度	Tissue culture supernatant
克隆	单克隆

同种型 IgG

**The Abpromise guarantee**      **Abpromise™承诺保证使用ab76085于以下的经测试应用**

应用	Ab评论	说明
WB	★★★★☆ (1)	1/50000 - 1/100000. Predicted molecular weight: 29 kDa.
IHC-P		1/100 - 1/250.

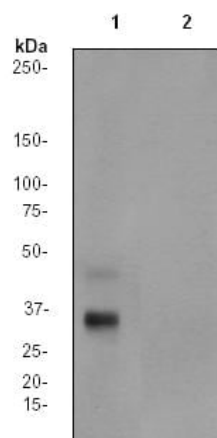
靶标

**疾病相关**

Defects in ATF1 may be a cause of angiomatoid fibrous histiocytoma (AFH) [MIM:612160]. A distinct variant of malignant fibrous histiocytoma that typically occurs in children and adolescents and is manifest by nodular subcutaneous growth. Characteristic microscopic features include lobulated sheets of histiocyte-like cells intimately associated with areas of hemorrhage and cystic pseudovascular spaces, as well as a striking cuffing of inflammatory cells, mimicking a lymph node metastasis. Note=Chromosomal aberrations involving ATF1 are found in patients with angiomatoid fibrous histiocytoma. Translocation t(12;16)(q13;p11.2) with FUS generates a chimeric ATF1/FUS protein. Translocation t(12;22)(q13;q12) with EWSR1 generates a chimeric ATF1/EWSR1 protein.

**细胞定位** Nucleus.

## 2



Western blot - Anti-ATF1 (phospho S63) antibody [EP1591(2)Y] (ab76085)

**All lanes :** Anti-ATF1 (phospho S63) antibody [EP1591(2)Y] (ab76085) at 1/100000 dilution

**Lane 1 :** HeLa cell lysate untreated

**Lane 2 :** HeLa cell lysate, treated with Lambda Phosphatase

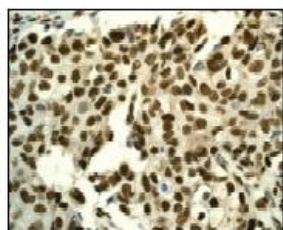
Lysates/proteins at 10 µg per lane.

#### Secondary

**All lanes :** Goat anti rabbit HRP labelled IgG at 1/2000 dilution

**Predicted band size:** 29 kDa

**Observed band size:** 29 kDa



Immunohistochemistry (Formalin/PFA-fixed paraffin-embedded sections) - Anti-ATF1 (phospho S63) antibody [EP1591(2)Y] (ab76085)

Immunohistochemical analysis of ATF1 in paraffin embedded human breast carcinoma tissue, using ab76085 at a 1/100 dilution.

**Please note:** All products are "FOR RESEARCH USE ONLY. NOT FOR USE IN DIAGNOSTIC PROCEDURES"

#### Our Abpromise to you: Quality guaranteed and expert technical support

- Replacement or refund for products not performing as stated on the datasheet
- Valid for 12 months from date of delivery
- Response to your inquiry within 24 hours
- We provide support in Chinese, English, French, German, Japanese and Spanish

- Extensive multi-media technical resources to help you
- We investigate all quality concerns to ensure our products perform to the highest standards

If the product does not perform as described on this datasheet, we will offer a refund or replacement. For full details of the Abpromise, please visit <https://www.abcam.cn/abpromise> or contact our technical team.

#### **Terms and conditions**

---

- Guarantee only valid for products bought direct from Abcam or one of our authorized distributors