

# Anti-ATAD3A antibody ab112572

**3 References**   **3 图像**

### 概述

产品名称	Anti-ATAD3A抗体
描述	兔多克隆抗体to ATAD3A
宿主	Rabbit
特异性	ab112572 is predicted to not cross-react with other ATAD protein family members.
经测试应用	适用于: WB, ICC/IF, ICC
种属反应性	与反应: Human
免疫原	Synthetic peptide corresponding to Human ATAD3A (N terminal). A 19 amino acid peptide corresponding to a region near the N terminal of Human ATAD3A. Database link: <a href="#">Q9NVI7</a>
阳性对照	Daudi cell lysate.
常规说明	<p>The Life Science industry has been in the grips of a reproducibility crisis for a number of years. Abcam is leading the way in addressing this with our range of recombinant monoclonal antibodies and knockout edited cell lines for gold-standard validation. Please check that this product meets your needs before purchasing.</p> <p>If you have any questions, special requirements or concerns, please send us an inquiry and/or contact our Support team ahead of purchase. Recommended alternatives for this product can be found below, along with publications, customer reviews and Q&amp;As</p>

### 性能

形式	Liquid
存放说明	Shipped at 4°C. Store at +4°C.
存储溶液	pH: 7.2 Preservative: 0.02% Sodium azide Constituent: 99% PBS
纯度	Immunogen affinity purified
纯化说明	ab112572 is purified by affinity chromatography purified via peptide column.
克隆	多克隆
同种型	IgG

## 应用

### The Abpromise guarantee

**Abpromise™** 承诺保证使用ab112572于以下的经测试应用

“应用说明”部分 下显示的仅为推荐的起始稀释度;实际最佳的稀释度/浓度应由使用者检定。

应用	Ab评论	说明
WB		Use a concentration of 1 - 2 µg/ml. Predicted molecular weight: 71 kDa.
ICC/IF		Use a concentration of 20 µg/ml.
ICC		Use a concentration of 20 µg/ml.

## 靶标

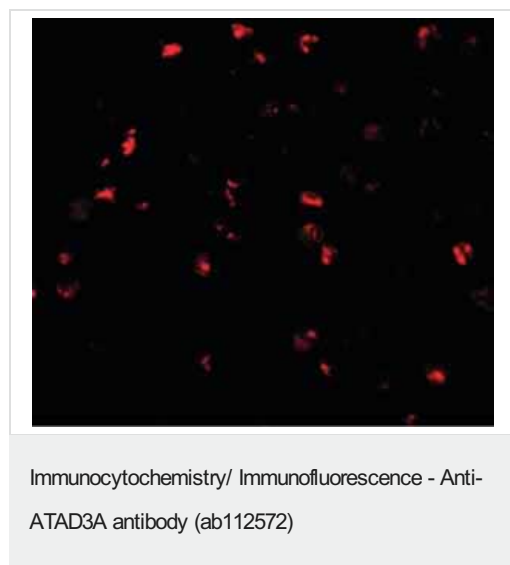
### 相关性

ATAD3A belongs to the AAA ATPase family. ATPases are a class of enzymes that catalyze the decomposition of adenosine triphosphate (ATP) into adenosine diphosphate (ADP) and a free phosphate ion. Two different isoforms obtained by alternative splicing, are known.

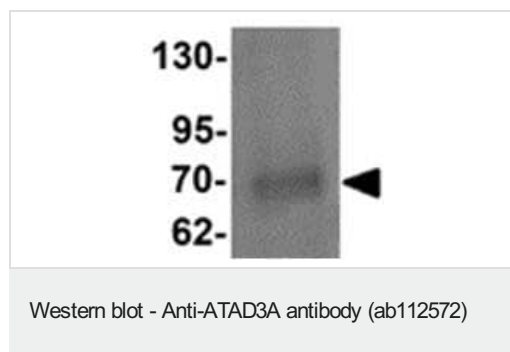
### 细胞定位

Mitochondrial

## 图片



Immunofluorescence of ATAD3A in Daudi cells with ab112572 at 20 µg/mL.



Anti-ATAD3A antibody (ab112572) at 1 µg/ml + Daudi cell lysate at 15 µg

**Predicted band size:** 71 kDa



Immunocytochemistry of ATAD3A in Daudi cells with ab112572 at 20 ug/mL.

Immunocytochemistry - Anti-ATAD3A antibody  
(ab112572)

**Please note:** All products are "FOR RESEARCH USE ONLY. NOT FOR USE IN DIAGNOSTIC PROCEDURES"

### Our Abpromise to you: Quality guaranteed and expert technical support

---

- Replacement or refund for products not performing as stated on the datasheet
- Valid for 12 months from date of delivery
- Response to your inquiry within 24 hours
- We provide support in Chinese, English, French, German, Japanese and Spanish
- Extensive multi-media technical resources to help you
- We investigate all quality concerns to ensure our products perform to the highest standards

If the product does not perform as described on this datasheet, we will offer a refund or replacement. For full details of the Abpromise, please visit <https://www.abcam.cn/abpromise> or contact our technical team.

### Terms and conditions

---

- Guarantee only valid for products bought direct from Abcam or one of our authorized distributors