

# Anti-Asef2 antibody ab122701

[1 References](#) [2 图像](#)

### 概述

产品名称	Anti-Asef2抗体
描述	兔多克隆抗体to Asef2
宿主	Rabbit
经测试应用	适用于: WB, ICC/IF
种属反应性	与反应: Human
免疫原	Recombinant fragment corresponding to Human Asef2 aa 576-648. Sequence: NQKKLAMLNAQKAGHGKSKGYNRCVPVAPPHQGLHPIHQRHIT MPTSVPQQ QVFGLAEPKRKSSLFWHTFNRLT  Database link: <a href="#">Q96N96</a>  <a href="#">Run BLAST with</a>  <a href="#">Run BLAST with</a>
阳性对照	ICC/IF: Human A-431 cells. WB: Human cell line HDLM-2.
常规说明	<p>The Life Science industry has been in the grips of a reproducibility crisis for a number of years. Abcam is leading the way in addressing this with our range of recombinant monoclonal antibodies and knockout edited cell lines for gold-standard validation. Please check that this product meets your needs before purchasing.</p> <p>If you have any questions, special requirements or concerns, please send us an inquiry and/or contact our Support team ahead of purchase. Recommended alternatives for this product can be found below, along with publications, customer reviews and Q&amp;As</p>

### 性能

形式	Liquid
存放说明	Shipped at 4°C. Upon delivery aliquot and store at -20°C. Avoid freeze / thaw cycles.
存储溶液	pH: 7.20 Preservative: 0.02% Sodium azide Constituents: 40% Glycerol (glycerin, glycerine), 59% PBS
纯度	Immunogen affinity purified
克隆	多克隆
同种型	IgG

## 应用

**The Abpromise guarantee**      **Abpromise™**承诺保证使用ab122701于以下的经测试应用

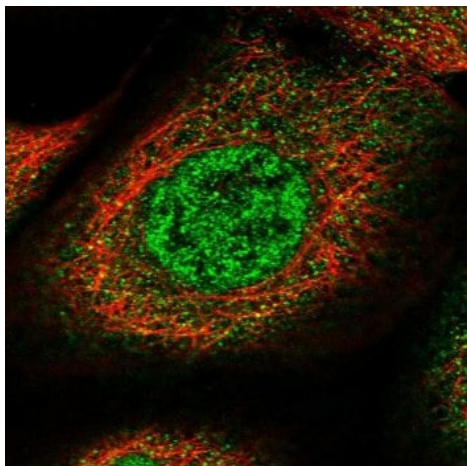
“应用说明”部分下显示的仅为推荐的起始稀释度;实际最佳的稀释度/浓度应由使用者检定。

应用	Ab评论	说明
WB		Use a concentration of 0.04 - 0.4 µg/ml. Predicted molecular weight: 75 kDa.
ICC/IF		Use a concentration of 0.25 - 2 µg/ml.

## 靶标

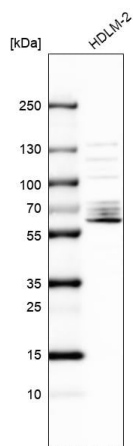
<b>功能</b>	Acts as guanine nucleotide exchange factor (GEF) for RHOA, RAC1 and CDC42 GTPases. Regulates cell migration and adhesion assembly and disassembly through a RAC1, PI3K, RHOA and AKT1-dependent mechanism. Increases both RAC1 and CDC42 activity, but decreases the amount of active RHOA. Required for MMP9 up-regulation via the JNK signaling pathway in colorectal tumor cells. Involved in tumor angiogenesis and may play a role in intestinal adenoma formation and tumor progression.
<b>组织特异性</b>	Expressed at high levels in the placenta, spleen and kidney, at moderate levels in lung, small intestine, liver, brain and heart, and at low levels in skeletal muscle. Expression is aberrantly enhanced in most colorectal tumors.
<b>序列相似性</b>	Contains 1 DH (DBL-homology) domain. Contains 1 PH domain. Contains 1 SH3 domain.
<b>结构域</b>	The C-terminal tail is required for its GEF activity.
<b>细胞定位</b>	Cytoplasm. Cell projection > filopodium. Cell projection > lamellipodium. Cell projection > ruffle membrane. Accumulates in the lamellipodium and ruffle membrane in response to hepatocyte growth factor (HGF) treatment.

## 图片



Immunofluorescent staining of Human cell line A-431 using ab122701 at 4µg/ml. Antibody staining is shown in green.

Immunocytochemistry/ Immunofluorescence - Anti-Asef2 antibody (ab122701)



Anti-Asef2 antibody (ab122701) + human cell line HDLM-2.

**Predicted band size: 75 kDa**

Western blot - Anti-Asef2 antibody (ab122701)

**Please note:** All products are "FOR RESEARCH USE ONLY. NOT FOR USE IN DIAGNOSTIC PROCEDURES"

### Our Abpromise to you: Quality guaranteed and expert technical support

- Replacement or refund for products not performing as stated on the datasheet
- Valid for 12 months from date of delivery
- Response to your inquiry within 24 hours
- We provide support in Chinese, English, French, German, Japanese and Spanish
- Extensive multi-media technical resources to help you
- We investigate all quality concerns to ensure our products perform to the highest standards

If the product does not perform as described on this datasheet, we will offer a refund or replacement. For full details of the Abpromise, please visit <https://www.abcam.cn/abpromise> or contact our technical team.

## Terms and conditions

---

- Guarantee only valid for products bought direct from Abcam or one of our authorized distributors