

Anti-ASC2/ASCI antibody ab47092

[14 References](#) [3 图像](#)

概述

产品名称	Anti-ASC2/ASCI抗体
描述	兔多克隆抗体to ASC2/ASCI
宿主	Rabbit
经测试应用	适用于: WB, IHC-P
种属反应性	与反应: Mouse, Human
免疫原	Recombinant full length protein corresponding to Human ASC2/ASCI.
常规说明	<p>The Life Science industry has been in the grips of a reproducibility crisis for a number of years. Abcam is leading the way in addressing this with our range of recombinant monoclonal antibodies and knockout edited cell lines for gold-standard validation. Please check that this product meets your needs before purchasing.</p> <p>If you have any questions, special requirements or concerns, please send us an inquiry and/or contact our Support team ahead of purchase. Recommended alternatives for this product can be found below, along with publications, customer reviews and Q&As</p>

性能

形式	Liquid
存放说明	Shipped at 4°C. Store at +4°C short term (1-2 weeks). Upon delivery aliquot. Store at -20°C long term.
存储溶液	Preservative: 0.05% Sodium azide Constituent: Whole serum
纯度	Whole antiserum
克隆	多克隆
同种型	IgG

应用

The Abpromise guarantee **Abpromise™** 承诺保证使用ab47092于以下的经测试应用

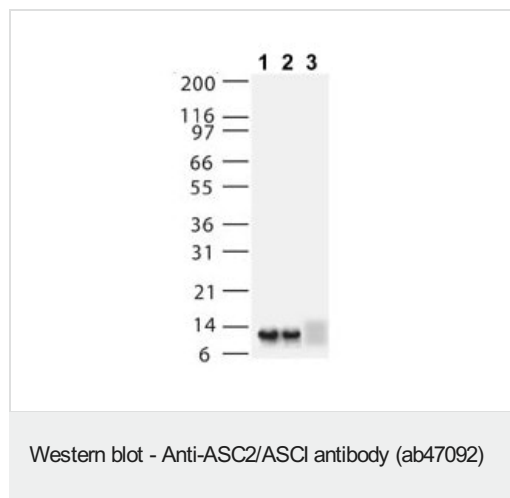
“应用说明”部分下显示的仅为推荐的起始稀释度;实际最佳的稀释度/浓度应由使用者检定。

应用	Ab评论	说明
WB		1/1000 - 1/2000. Detects a band of approximately 10 kDa (predicted molecular weight: 10 kDa).
IHC-P		Use at an assay dependent concentration.

靶标

功能	Associates with apoptosis-associated specklike protein containing a CARD domain (ASC) and modulates its ability to collaborate with pyrin and cryopyrin in NF-kappa-B and pro-caspase-1 activation. Suppresses kinase activity of NF-kappa-B inhibitor kinase (IKK) complex, expression of NF-kappa-B inducible genes and inhibits NF-kappa-B activation by cytokines and LPS.
组织特异性	Predominantly expressed in monocytes, macrophages and granulocytes.
序列相似性	Contains 1 DAPIN domain.
翻译后修饰	Phosphorylated.
细胞定位	Cytoplasm.

图片



All lanes : Anti-ASC2/ASCI antibody (ab47092) at 1/2000 dilution

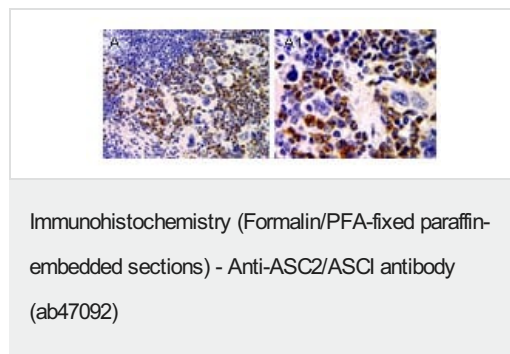
Lane 1 : HEK-293 cells transiently transfected with plasmid encoding ASC2/ASCI

Lane 2 : HEK-293 cells transiently transfected with plasmid encoding POP1

Lane 3 : HEK-293 cells transiently transfected with a negative control plasmid

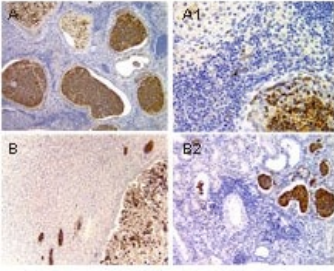
Predicted band size: 10 kDa

Observed band size: 10 kDa



Immunohistochemical analysis of ASC2/ASCI/POP1 expression in mouse spleen using ab47092 at 1:2000. Left and Right images: spleen at low and high magnification, respectively.

ASC2/ASCI/POP1 staining is seen in the granulocytes, whereas the lymph and megakaryocytes are negative.



Immunohistochemical analysis of ASC2/ASCI/POP1 expression in mouse using ab47092 at 1:2000. A, prostate tissue from a male mouse prostatitis. B, kidney from a mouse with pyelonephritis. A1 and B1, high magnification of A and B, respectively. ASC2/ASCI/POP1 staining is seen in the granulocytes

Immunohistochemistry (Formalin/PFA-fixed paraffin-embedded sections) - Anti-ASC2/ASCI antibody (ab47092)

Please note: All products are "FOR RESEARCH USE ONLY. NOT FOR USE IN DIAGNOSTIC PROCEDURES"

Our Abpromise to you: Quality guaranteed and expert technical support

- Replacement or refund for products not performing as stated on the datasheet
- Valid for 12 months from date of delivery
- Response to your inquiry within 24 hours
- We provide support in Chinese, English, French, German, Japanese and Spanish
- Extensive multi-media technical resources to help you
- We investigate all quality concerns to ensure our products perform to the highest standards

If the product does not perform as described on this datasheet, we will offer a refund or replacement. For full details of the Abpromise, please visit <https://www.abcam.cn/abpromise> or contact our technical team.

Terms and conditions

- Guarantee only valid for products bought direct from Abcam or one of our authorized distributors