

Anti-ARTS1/ERAP1 antibody [EPR6069] ab124669

重组 RabMAb

3 References **6 图像**

概述

产品名称	Anti-ARTS1/ERAP1抗体[EPR6069]
描述	兔单克隆抗体[EPR6069] to ARTS1/ERAP1
宿主	Rabbit
经测试应用	适用于: WB, IHC-P 不适用于: Flow Cyt or ICC/IF
种属反应性	与反应: Mouse, Rat, Human
免疫原	Synthetic peptide corresponding to Human ARTS1/ERAP1 aa 900-1000 (C terminal).
阳性对照	WB: K562, HUVEC, mouse heart, rat spleen and A431 cell lysates. IHC-P: Human uterus and human bladder carcinoma tissue. Flow Cyt: K562 cells.
常规说明	This product is a recombinant monoclonal antibody, which offers several advantages including: <ul style="list-style-type: none"> - High batch-to-batch consistency and reproducibility - Improved sensitivity and specificity - Long-term security of supply - Animal-free production For more information see here . Our RabMAb [®] technology is a patented hybridoma-based technology for making rabbit monoclonal antibodies. For details on our patents, please refer to RabMAb[®] patents .

性能

形式	Liquid
存放说明	Shipped at 4°C. Store at +4°C short term (1-2 weeks). Upon delivery aliquot. Store at -20°C long term. Avoid freeze / thaw cycle.
存储溶液	pH: 7.20 Preservative: 0.01% Sodium azide Constituents: 40% Glycerol (glycerin, glycerine), 0.05% BSA, 59% PBS
纯度	Protein A purified
克隆	单克隆
克隆编号	EPR6069

同种型

IgG

应用

The Abpromise guarantee

Abpromise™承诺保证使用ab124669于以下的经测试应用

“应用说明”部分 下显示的仅为推荐的起始稀释度;实际最佳的稀释度/浓度应由使用者检定。

应用	Ab评论	说明
WB		1/1000 - 1/10000. Predicted molecular weight: 107 kDa.
IHC-P		1/1000. Perform heat mediated antigen retrieval via the pressure cooker method before commencing with IHC staining protocol. The mouse and rat recommendation is based on the WB results. We do not guarantee IHC-P for mouse and rat. For unpurified use at 1/50 - 1/100.

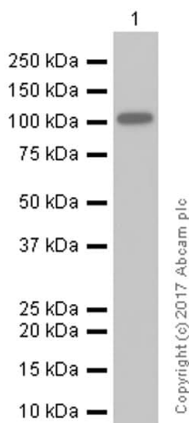
应用说明

Is unsuitable for Flow Cyt or ICC/IF.

靶标

功能	Aminopeptidase that plays a central role in peptide trimming, a step required for the generation of most HLA class I-binding peptides. Peptide trimming is essential to customize longer precursor peptides to fit them to the correct length required for presentation on MHC class I molecules. Strongly prefers substrates 9-16 residues long. Rapidly degrades 13-mer to a 9-mer and then stops. Preferentially hydrolyzes the residue Leu and peptides with a hydrophobic C-terminus, while it has weak activity toward peptides with charged C-terminus. May play a role in the inactivation of peptide hormones. May be involved in the regulation of blood pressure through the inactivation of angiotensin II and/or the generation of bradykinin in the kidney.
组织特异性	Ubiquitous.
序列相似性	Belongs to the peptidase M1 family.
翻译后修饰	N-glycosylated.
细胞定位	Endoplasmic reticulum membrane.

图片



Western blot - Anti-ARTS1/ERAP1 antibody
[EPR6069] (ab124669)

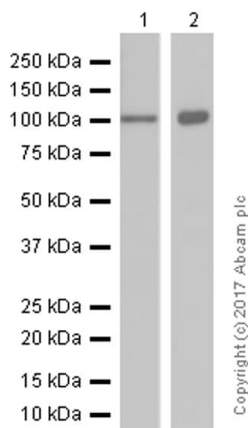
Anti-ARTS1/ERAP1 antibody [EPR6069] (ab124669) at 1/5000 dilution (purified) + K-562 (Human chronic myelogenous leukemia lymphoblast) whole cell lysates at 15 µg

Secondary

Goat Anti-Rabbit IgG H&L (HRP) ([ab97051](#)) at 1/20000 dilution

Predicted band size: 107 kDa

Blocking and diluting buffer: 5% NFDM/TBST.



Western blot - Anti-ARTS1/ERAP1 antibody
[EPR6069] (ab124669)

All lanes : Anti-ARTS1/ERAP1 antibody [EPR6069] (ab124669) at 1/5000 dilution (purified)

Lane 1 : Mouse heart lysates

Lane 2 : Rat spleen lysates

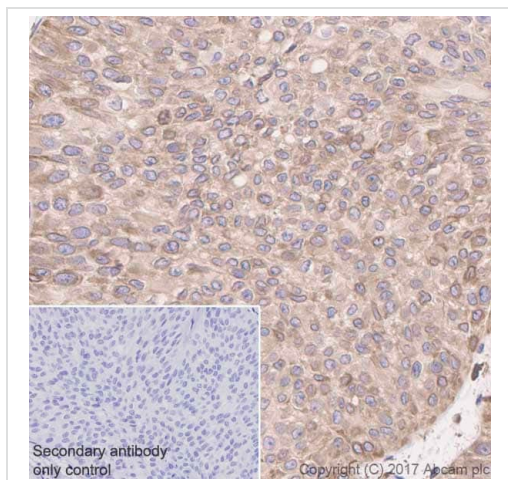
Lysates/proteins at 20 µg per lane.

Secondary

All lanes : Goat Anti-Rabbit IgG H&L (HRP) ([ab97051](#)) at 1/20000 dilution

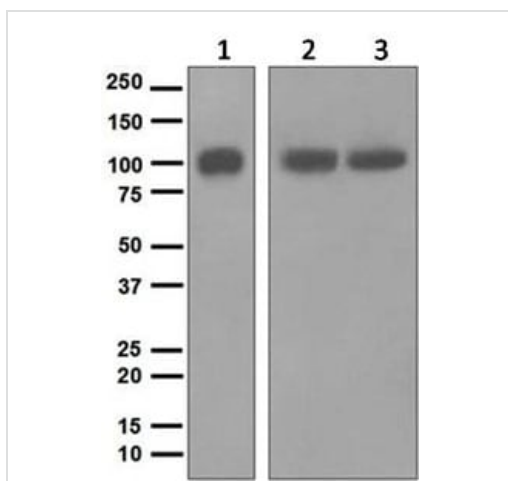
Predicted band size: 107 kDa

Blocking and diluting buffer: 5% NFDM/TBST.



Immunohistochemistry (Formalin/PFA-fixed paraffin-embedded sections) - Anti-ARTS1/ERAP1 antibody [EPR6069] (ab124669)

Immunohistochemistry (Formalin/PFA-fixed paraffin-embedded sections) analysis of human bladder carcinoma tissue sections labeling ARTS1/ERAP1 with Purified ab124669 at 1:1000 dilution. Heat mediated antigen retrieval was performed using **ab93684** (Tris/EDTA buffer, pH 9.0). Tissue was counterstained with Hematoxylin. ImmunoHistoProbe one step HRP Polymer (ready to use) secondary antibody was used at 1:0 dilution. PBS instead of the primary antibody was used as the negative control.



Western blot - Anti-ARTS1/ERAP1 antibody [EPR6069] (ab124669)

All lanes : Anti-ARTS1/ERAP1 antibody [EPR6069] (ab124669) at 1/1000 dilution (unpurified)

Lane 1 : K562 cell lysate

Lane 2 : HUVEC cell lysate

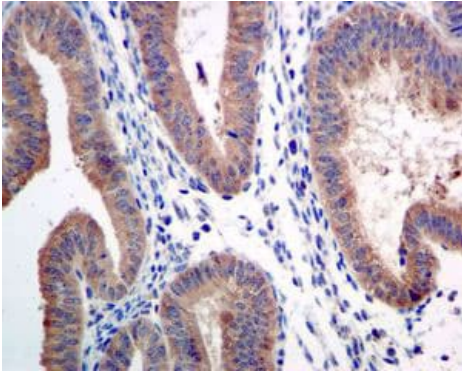
Lane 3 : A431 cell lysate

Lysates/proteins at 10 µg per lane.

Secondary

All lanes : Goat anti-rabbit HRP

Predicted band size: 107 kDa



Unpurified ab124669, at a 1/50 dilution, staining ARTS1/ERAP1 in paraffin embedded Human uterus tissue by Immunohistochemistry.

Perform heat mediated antigen retrieval via the pressure cooker method before commencing with IHC staining protocol.

Immunohistochemistry (Formalin/PFA-fixed paraffin-embedded sections) - Anti-ARTS1/ERAP1 antibody [EPR6069] (ab124669)

Why choose a recombinant antibody?



Anti-ARTS1/ERAP1 antibody [EPR6069] (ab124669)

Please note: All products are "FOR RESEARCH USE ONLY. NOT FOR USE IN DIAGNOSTIC PROCEDURES"

Our Abpromise to you: Quality guaranteed and expert technical support

- Replacement or refund for products not performing as stated on the datasheet
- Valid for 12 months from date of delivery
- Response to your inquiry within 24 hours
- We provide support in Chinese, English, French, German, Japanese and Spanish
- Extensive multi-media technical resources to help you
- We investigate all quality concerns to ensure our products perform to the highest standards

If the product does not perform as described on this datasheet, we will offer a refund or replacement. For full details of the Abpromise, please visit <https://www.abcam.cn/abpromise> or contact our technical team.

Terms and conditions

- Guarantee only valid for products bought direct from Abcam or one of our authorized distributors