




Anti-ARP1 antibody ab11009

★★★★★ [6 Abreviews](#) [2 References](#) [3 图像](#)

概述

产品名称	Anti-ARP1抗体
描述	兔多克隆抗体to ARP1
宿主	Rabbit
经测试应用	适用于: IHC-P, WB
种属反应性	与反应: Rat, Human 预测可用于: Dog 
免疫原	Synthetic peptide corresponding to Human ARP1 aa 222-240 conjugated to keyhole limpet haemocyanin. Sequence: ACYLSINPQKDETELEKAQ <div>  Run BLAST with  Run BLAST with </div>
常规说明	<p>If slight turbidity occurs upon prolonged storage, clarify the solution by centrifugation before use. Working dilutions should be discarded if not used within 12 hours.</p> <p>The Life Science industry has been in the grips of a reproducibility crisis for a number of years. Abcam is leading the way in addressing this with our range of recombinant monoclonal antibodies and knockout edited cell lines for gold-standard validation. Please check that this product meets your needs before purchasing.</p> <p>If you have any questions, special requirements or concerns, please send us an inquiry and/or contact our Support team ahead of purchase. Recommended alternatives for this product can be found below, along with publications, customer reviews and Q&As</p>

性能

形式	Liquid
存放说明	Shipped at 4°C. Store at +4°C short term (1-2 weeks). Upon delivery aliquot. Store at -20°C or -80°C. Avoid freeze / thaw cycle.
存储溶液	pH: 7.40 Preservative: 0.097% Sodium azide Constituent: 0.0268% PBS
纯度	IgG fraction
纯化说明	Whole antiserum is fractionated and then further purified by ion-exchange chromatography to

provide the IgG fraction of antiserum that is essentially free of other rabbit serum proteins.

克隆
同种型

多克隆
IgG

应用

The Abpromise guarantee **Abpromise™**承诺保证使用ab11009于以下的经测试应用

“应用说明”部分 下显示的仅为推荐的起始稀释度;实际最佳的稀释度/浓度应由使用者检定。

应用	Ab评论	说明
IHC-P		
WB	★★★★★ (4)	

应用说明

IF: 1/100.

For indirect immunofluorescence, a minimum working antibody dilution of 1:100 is recommended using mouse fibroblasts NIH3T cell.

WB: 1/1000 (recommended using a rat brain cytosol extract and a whole cell extract of the human epidermoid carcinoma A431 cell line). Predicted molecular weight: 45 kDa.

Not tested in other applications.

Optimal dilutions/concentrations should be determined by the end user.

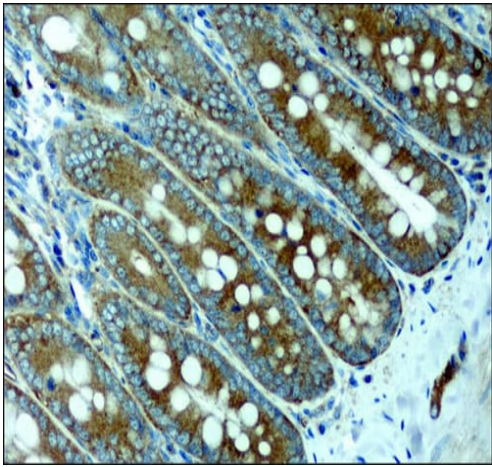
靶标

功能 Component of a multi-subunit complex involved in microtubule based vesicle motility. It is associated with the centrosome.

序列相似性 Belongs to the actin family. ARP1 subfamily.

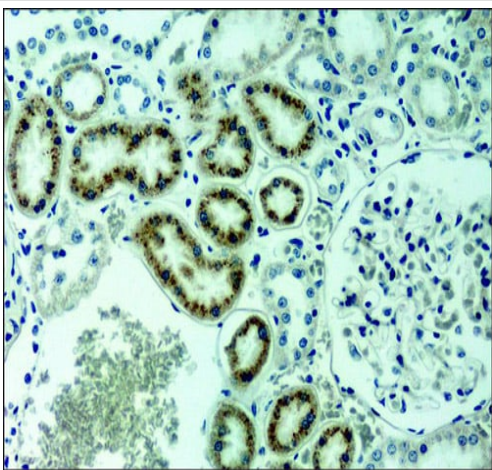
细胞定位 Cytoplasm > cytoskeleton. Cytoplasm > cytoskeleton > centrosome.

图片



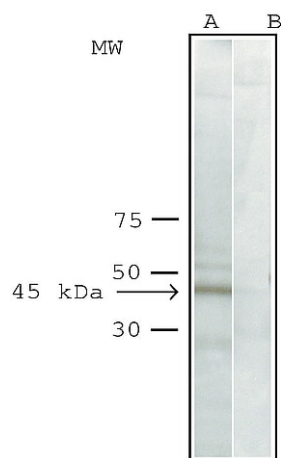
Immunohistochemistry (Formalin/PFA-fixed paraffin-embedded sections) - Anti-ARP1 antibody (ab11009)

Immunohistochemistry (Formalin fixed, paraffin-embedded sections) analysis of rat duodenum tissue labelling ARP1 with ab11009.



Immunohistochemistry (Formalin/PFA-fixed paraffin-embedded sections) - Anti-ARP1 antibody (ab11009)

Immunohistochemistry (Formalin fixed, paraffin-embedded sections) analysis of rat kidney tissue labelling ARP1 with ab11009.



Western blot - Anti-ARP1 antibody (ab11009)

All lanes : Anti-ARP1 antibody (ab11009) at 1/1000 dilution

Lane 1 : A432 cell lysate

Lane 2 : A432 cell lysate with ARP1 immunising peptide at 5 mg/ml

Predicted band size: 45 kDa

Observed band size: 45 kDa

Our Abpromise to you: Quality guaranteed and expert technical support

- Replacement or refund for products not performing as stated on the datasheet
- Valid for 12 months from date of delivery
- Response to your inquiry within 24 hours
- We provide support in Chinese, English, French, German, Japanese and Spanish
- Extensive multi-media technical resources to help you
- We investigate all quality concerns to ensure our products perform to the highest standards

If the product does not perform as described on this datasheet, we will offer a refund or replacement. For full details of the Abpromise, please visit <https://www.abcam.cn/abpromise> or contact our technical team.

Terms and conditions

- Guarantee only valid for products bought direct from Abcam or one of our authorized distributors