

# Anti-ARL4C antibody ab122025

[4 References](#) [3 图像](#)

### 概述

---

<b>产品名称</b>	Anti-ARL4C抗体
<b>描述</b>	兔多克隆抗体to ARL4C
<b>宿主</b>	Rabbit
<b>经测试应用</b>	<b>适用于:</b> IHC-P, WB, ICC/IF
<b>种属反应性</b>	<b>与反应:</b> Human
<b>免疫原</b>	antigen sequence corresponding to C terminal amino acids 88-192 of Human ARL4C.
<b>阳性对照</b>	Human skeletal muscle tissue. RT-4 and U-251 MG cell lysate. A-431 cells.
<b>常规说明</b>	<p>The Life Science industry has been in the grips of a reproducibility crisis for a number of years. Abcam is leading the way in addressing this with our range of recombinant monoclonal antibodies and knockout edited cell lines for gold-standard validation. Please check that this product meets your needs before purchasing.</p> <p>If you have any questions, special requirements or concerns, please send us an inquiry and/or contact our Support team ahead of purchase. Recommended alternatives for this product can be found below, along with publications, customer reviews and Q&amp;As</p>

### 性能

---

<b>形式</b>	Liquid
<b>存放说明</b>	Shipped at 4°C. Upon delivery aliquot and store at -20°C. Avoid repeated freeze / thaw cycles.
<b>存储溶液</b>	pH: 7.20 Preservative: 0.02% Sodium azide Constituents: 40% Glycerol (glycerin, glycerine), 59% PBS
<b>纯度</b>	Immunogen affinity purified
<b>克隆</b>	多克隆
<b>同种型</b>	IgG

### 应用

---

## The Abpromise guarantee

**Abpromise™** 承诺保证使用 ab122025 于以下的经测试应用

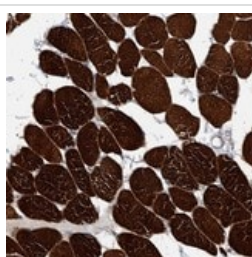
“应用说明”部分 下显示的仅为推荐的起始稀释度；实际最佳的稀释度/浓度应由使用者检定。

应用	Ab评论	说明
IHC-P		1/50 - 1/200. Perform heat mediated antigen retrieval with citrate buffer pH 6 before commencing with IHC staining protocol.
WB		Use a concentration of 0.04 - 0.4 µg/ml.
ICC/IF		Use a concentration of 0.25 - 2 µg/ml.

## 靶标

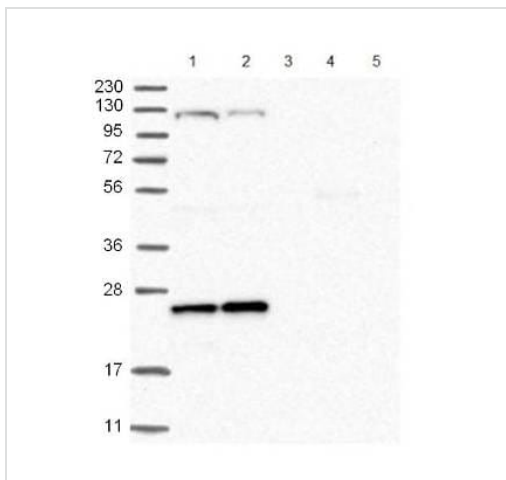
<b>功能</b>	Small GTP-binding protein which cycles between an inactive GDP-bound and an active GTP-bound form, and the rate of cycling is regulated by guanine nucleotide exchange factors (GEF) and GTPase-activating proteins (GAP). GTP-binding protein that does not act as an allosteric activator of the cholera toxin catalytic subunit. May be involved in transport between a perinuclear compartment and the plasma membrane, apparently linked to the ABCA1-mediated cholesterol secretion pathway. Recruits CYTH1, CYTH2, CYTH3 and CYTH4 to the plasma membrane in the GDP-bound form. Regulates the microtubule-dependent intracellular vesicular transport from early endosome to recycling endosome process.
<b>组织特异性</b>	Expressed in several tumor cell lines (at protein level). Expressed in lung, brain, leukocytes and placenta.
<b>序列相似性</b>	Belongs to the small GTPase superfamily. Arf family.
<b>细胞定位</b>	Cell projection > filopodium. Cell membrane. Cytoplasm.

## 图片



ab122025 at 1/120 dilution staining ARL4C in paraffin-embedded Human skeletal muscle by Immunohistochemistry.

Immunohistochemistry (Formalin/PFA-fixed paraffin-embedded sections) - Anti-ARL4C antibody (ab122025)



Western blot - Anti-ARL4C antibody (ab122025)

**All lanes** : Anti-ARL4C antibody (ab122025) at 1/250 dilution

**Lane 1** : RT-4 cell lysate.

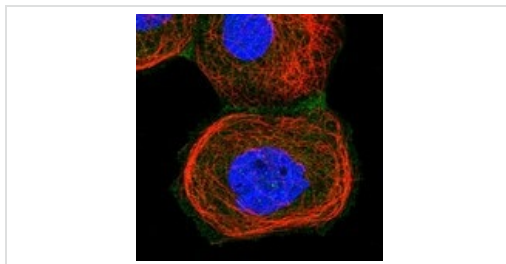
**Lane 2** : U-251 MG cell lysate.

**Lane 3** : Human plasma

**Lane 4** : Human Liver tissue lysate.

**Lane 5** : Human Tonsil tissue lysate.

Developed using the ECL technique.



Immunocytochemistry/ Immunofluorescence - Anti-ARL4C antibody (ab122025)

ab122025 at 1 µg/ml staining ARL4C (green) in PFA-fixed, Triton X-100 permeabilized, A-431 cells by Immunofluorescence.

**Please note:** All products are "FOR RESEARCH USE ONLY. NOT FOR USE IN DIAGNOSTIC PROCEDURES"

### Our Abpromise to you: Quality guaranteed and expert technical support

- Replacement or refund for products not performing as stated on the datasheet
- Valid for 12 months from date of delivery
- Response to your inquiry within 24 hours
- We provide support in Chinese, English, French, German, Japanese and Spanish
- Extensive multi-media technical resources to help you
- We investigate all quality concerns to ensure our products perform to the highest standards

If the product does not perform as described on this datasheet, we will offer a refund or replacement. For full details of the Abpromise, please visit <https://www.abcam.cn/abpromise> or contact our technical team.

## Terms and conditions

---

- Guarantee only valid for products bought direct from Abcam or one of our authorized distributors