


Anti-ARFGEF2/BIG2 antibody ab72420

★★★★★ [2 Abreviews](#) [3 图像](#)

概述

产品名称	Anti-ARFGEF2/BIG2抗体
描述	兔多克隆抗体to ARFGEF2/BIG2
宿主	Rabbit
经测试应用	适用于: WB, IP, IHC-P
种属反应性	与反应: Human 预测可用于: Chimpanzee, Rhesus monkey, Gorilla, Orangutan 
免疫原	Synthetic peptide corresponding to Human ARFGEF2/BIG2. GenBank: NP_006411.1 Database link: Q9Y6D5
阳性对照	HeLa whole cell lysate.
常规说明	<p>The Life Science industry has been in the grips of a reproducibility crisis for a number of years. Abcam is leading the way in addressing this with our range of recombinant monoclonal antibodies and knockout edited cell lines for gold-standard validation. Please check that this product meets your needs before purchasing.</p> <p>If you have any questions, special requirements or concerns, please send us an inquiry and/or contact our Support team ahead of purchase. Recommended alternatives for this product can be found below, along with publications, customer reviews and Q&As</p>

性能

形式	Liquid
存放说明	Shipped at 4°C. Upon delivery aliquot and store at -20°C. Avoid freeze / thaw cycles.
存储溶液	pH: 6.8 Preservative: 0.09% Sodium azide Constituents: 0.1% BSA, Tris buffered saline
纯度	Immunogen affinity purified
纯化说明	ab72420 was affinity purified using an epitope specific to ARFGEF2/BIG2 immobilized on solid support.
克隆	多克隆
同种型	IgG

应用

The Abpromise guarantee

Abpromise™ 承诺保证使用 ab72420 于以下的经测试应用

“应用说明”部分 下显示的仅为推荐的起始稀释度;实际最佳的稀释度/浓度应由使用者检定。

应用	Ab评论	说明
WB	★★★★★ (1)	1/2000 - 1/10000. Detects a band of approximately 202 kDa (predicted molecular weight: 202 kDa).
IP		Use at 2-5 µg/mg of lysate.
IHC-P		1/100 - 1/500. Perform heat mediated antigen retrieval with citrate buffer pH 6 before commencing with IHC staining protocol.

靶标

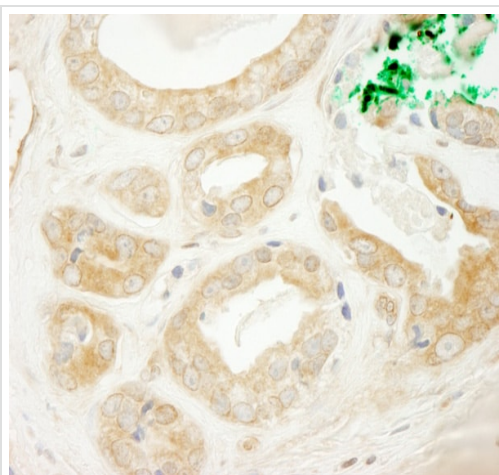
相关性

ADP-ribosylation factors (ARFs) play an important role in intracellular vesicular trafficking. ARFGEF2 promotes guanine-nucleotide exchange on ARF1, ARF5 and ARF6 and the activation of ARF1/ARF5/ARF6 through replacement of GDP with GTP. It contains a Sec7 domain, which may be responsible for its guanine-nucleotide exchange activity and also brefeldin A inhibition.

细胞定位

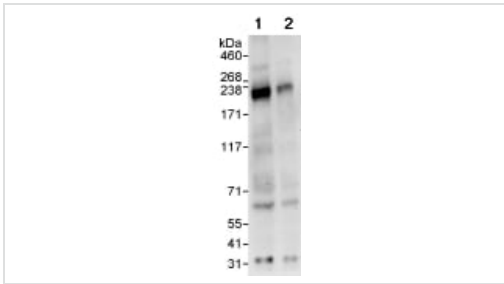
Cytoplasm. Membrane. Golgi apparatus. Cytoplasm › perinuclear region. Golgi apparatus › trans-Golgi network By similarity. Endosome By similarity. Cytoplasm › cytoskeleton › microtubule organizing center › centrosome. Cell projection › dendrite By similarity. Cytoplasmic vesicle By similarity. Cell junction › synapse By similarity. Cytoplasm › cytoskeleton By similarity. Note: Translocates from cytoplasm to membranes upon cAMP treatment. Localized in recycling endosomes.

图片



Immunohistochemistry (Formalin/PFA-fixed paraffin-embedded sections) analysis of human prostate carcinoma tissue labelling ARFGEF2/BIG with ab72420 at 1/200 (1µg/ml). Detection: DAB.

Immunohistochemistry (Formalin/PFA-fixed paraffin-embedded sections) - Anti-ARFGEF2/BIG2 antibody (ab72420)



Western blot - Anti-ARFGEF2/BIG2 antibody
(ab72420)

All lanes : Anti-ARFGEF2/BIG2 antibody (ab72420) at 0.04 µg/ml

Lane 1 : HeLa whole cell lysate at 50 µg

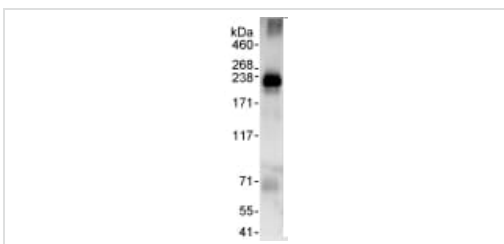
Lane 2 : HeLa whole cell lysate at 15 µg

Developed using the ECL technique.

Predicted band size: 202 kDa

Observed band size: 202 kDa

Exposure time: 3 minutes



Immunoprecipitation - Anti-ARFGEF2/BIG2 antibody
(ab72420)

Detection of ARFGEF2/BIG by Western Blot of Immunoprecipitate.
ab72420 at 1µg/ml staining ARFGEF2/BIG in HeLa whole cell lysate immunoprecipitated using ab72420 at 3µg/mg lysate (1 mg/IP; 20% of IP loaded/lane).

Detection: Chemiluminescence with exposure time of 30 seconds.

Please note: All products are "FOR RESEARCH USE ONLY. NOT FOR USE IN DIAGNOSTIC PROCEDURES"

Our Abpromise to you: Quality guaranteed and expert technical support

- Replacement or refund for products not performing as stated on the datasheet
- Valid for 12 months from date of delivery
- Response to your inquiry within 24 hours
- We provide support in Chinese, English, French, German, Japanese and Spanish
- Extensive multi-media technical resources to help you
- We investigate all quality concerns to ensure our products perform to the highest standards

If the product does not perform as described on this datasheet, we will offer a refund or replacement. For full details of the Abpromise, please visit <https://www.abcam.cn/abpromise> or contact our technical team.

Terms and conditions

- Guarantee only valid for products bought direct from Abcam or one of our authorized distributors