


Anti-ARFGAP1 antibody ab85971

[1 References](#) [2 图像](#)

概述

产品名称	Anti-ARFGAP1抗体
描述	兔多克隆抗体to ARFGAP1
宿主	Rabbit
经测试应用	适用于: WB, IP
种属反应性	与反应: Human 预测可用于: Guinea pig, Chimpanzee, Rhesus monkey, Gorilla, Orangutan 
免疫原	Synthetic peptide corresponding to Human ARFGAP1 aa 466-516. Database link: NP_055385.2
阳性对照	HeLa whole cell lysate.
常规说明	<p>The Life Science industry has been in the grips of a reproducibility crisis for a number of years. Abcam is leading the way in addressing this with our range of recombinant monoclonal antibodies and knockout edited cell lines for gold-standard validation. Please check that this product meets your needs before purchasing.</p> <p>If you have any questions, special requirements or concerns, please send us an inquiry and/or contact our Support team ahead of purchase. Recommended alternatives for this product can be found below, along with publications, customer reviews and Q&As</p>

性能

形式	Liquid
存放说明	Shipped at 4°C. Upon delivery aliquot and store at -20°C. Avoid freeze / thaw cycles.
存储溶液	pH: 6.8 Preservative: 0.09% Sodium azide Constituents: Tris buffered saline, 0.1% BSA
纯度	Immunogen affinity purified
纯化说明	ab85971 was affinity purified using an epitope specific to ARFGAP1 immobilized on solid support.
克隆	多克隆
同种型	IgG

应用

The Abpromise guarantee **Abpromise™**承诺保证使用ab85971于以下的经测试应用

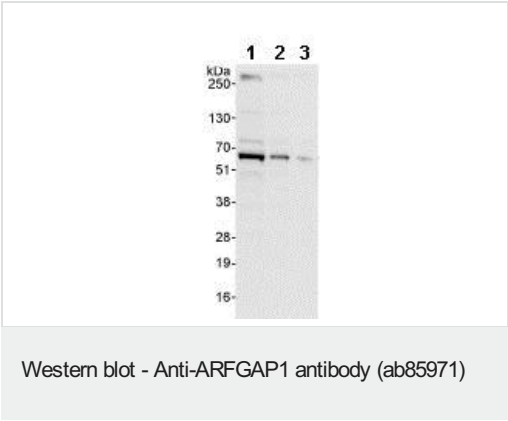
“应用说明”部分 下显示的仅为推荐的起始稀释度;实际最佳的稀释度/浓度应由使用者检定。

应用	Ab评论	说明
WB		1/2000 - 1/10000. Detects a band of approximately 57 kDa (predicted molecular weight: 57 kDa).
IP		Use at 2-5 µg/mg of lysate.

靶标

功能	GTPase-activating protein (GAP) for ADP ribosylation factor 1 (ARF1). Hydrolysis of ARF1-bound GTP may lead to dissociation of coatmer from Golgi-derived membranes to allow fusion with target membranes.
组织特异性	Widely expressed. Highest expression in endocrine glands (pancreas, pituitary gland, salivary gland, and prostate) and testis with a much higher expression in the testis than in the ovary.
序列相似性	Contains 1 Arf-GAP domain.
发展阶段	Expressed at higher level in adult thymus, brain and lung, than in corresponding fetal tissues. Expressed at lower level in spleen, heart, kidney and liver during development.
细胞定位	Cytoplasm. Golgi apparatus membrane. Also found on peripheral punctate structures likely to be endoplasmic reticulum-Golgi intermediate compartment.

图片



All lanes : Anti-ARFGAP1 antibody (ab85971) at 0.04 µg/ml

Lane 1 : HeLa whole cell lysate at 50 µg

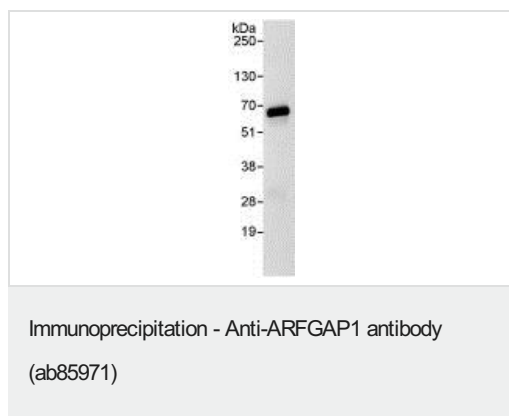
Lane 2 : HeLa whole cell lysate at 15 µg

Lane 3 : HeLa whole cell lysate at 5 µg

Predicted band size: 57 kDa

Observed band size: 63 kDa

Exposure time: 30 seconds



Detection of ARFGAP1 by Western Blot of Immunoprecipitate.
ab85971 at 1 µg/ml staining ARFGAP1 in HeLa whole cell lysate immunoprecipitated using ab85971 at 3 µg/mg lysate (1 mg/IP; 20% of IP loaded/lane). Detection: Chemiluminescence with exposure time of 10 seconds.

Please note: All products are "FOR RESEARCH USE ONLY. NOT FOR USE IN DIAGNOSTIC PROCEDURES"

Our Abpromise to you: Quality guaranteed and expert technical support

- Replacement or refund for products not performing as stated on the datasheet
- Valid for 12 months from date of delivery
- Response to your inquiry within 24 hours
- We provide support in Chinese, English, French, German, Japanese and Spanish
- Extensive multi-media technical resources to help you
- We investigate all quality concerns to ensure our products perform to the highest standards

If the product does not perform as described on this datasheet, we will offer a refund or replacement. For full details of the Abpromise, please visit <https://www.abcam.cn/abpromise> or contact our technical team.

Terms and conditions

- Guarantee only valid for products bought direct from Abcam or one of our authorized distributors