


Anti-ARF1 + ARF3 antibody [EPR443] ab108347

重组 RabMAb

7 References 6 图像

概述

产品名称	Anti-ARF1 + ARF3抗体[EPR443]
描述	兔单克隆抗体[EPR443] to ARF1 + ARF3
宿主	Rabbit
特异性	The immunogen used to raise this antibody shares 100% homology with human ARF3, 96% homology with ARF4 and ARF5, and 88% homology with ARF6. Cross-reactivity with the latter three proteins have not been confirmed experimentally.
经测试应用	适用于: WB, IHC-P, ICC/IF 不适用于: Flow Cyt or IP
种属反应性	与反应: Human 预测可用于: Mouse, Rat 
免疫原	Synthetic peptide. This information is proprietary to Abcam and/or its suppliers.
阳性对照	Human fetal kidney, Human fetal brain and MCF7 lysates; Human breast ductal carcinoma, and Human colonic adenocarcinoma tissues This antibody gave a positive result when used in the following methanol fixed cell lines: CaCo2
常规说明	This product is a recombinant monoclonal antibody, which offers several advantages including: <ul style="list-style-type: none">- High batch-to-batch consistency and reproducibility- Improved sensitivity and specificity- Long-term security of supply- Animal-free production For more information see here . Our RabMAb [®] technology is a patented hybridoma-based technology for making rabbit monoclonal antibodies. For details on our patents, please refer to RabMAb[®] patents .

性能

形式	Liquid
存放说明	Shipped at 4°C. Store at -20°C. Stable for 12 months at -20°C.
存储溶液	pH: 7.20 Preservative: 0.01% Sodium azide Constituents: 59% PBS, 40% Glycerol (glycerin, glycerine), 0.5% BSA

纯度	Protein A purified
克隆	单克隆
克隆编号	EPR443
同种型	IgG

应用

The Abpromise guarantee Abpromise™ 承诺保证使用 ab108347 于以下的经测试应用

“应用说明”部分下显示的仅为推荐的起始稀释度；实际最佳的稀释度/浓度应由使用者检定。

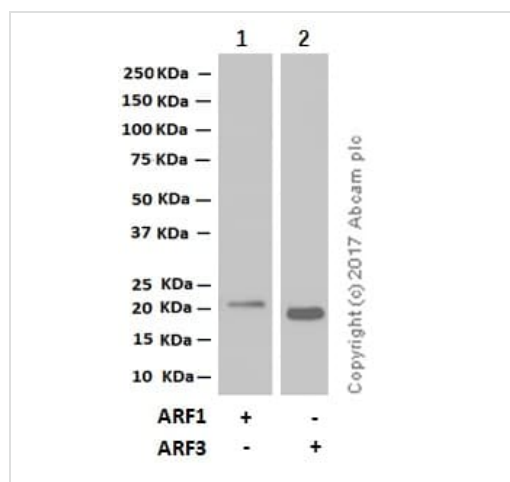
应用	Ab评论	说明
WB		1/1000 - 1/10000. Predicted molecular weight: 21 kDa.
IHC-P		1/100 - 1/250. Perform heat mediated antigen retrieval before commencing with IHC staining protocol.
ICC/IF		1/50 - 1/100.

应用说明 Is unsuitable for Flow Cyt or IP.

靶标

细胞定位 ARF1: Golgi apparatus. Cytoplasm > perinuclear region. ARF3: Golgi apparatus. Cytoplasm > perinuclear region.

图片



Western blot - Anti-ARF1 + ARF3 antibody [EPR443] (ab108347)

All lanes : Anti-ARF1 + ARF3 antibody [EPR443] (ab108347) at 1/50000 dilution

Lane 1 : Full length human ARF-1 recombinant protein

Lane 2 : Full length human ARF-3 recombinant protein

Lysates/proteins at 0.015 µg per lane.

Secondary

All lanes : Goat Anti-Rabbit IgG H&L (HRP) ([ab97051](#)) at 1/20000 dilution

Predicted band size: 21 kDa

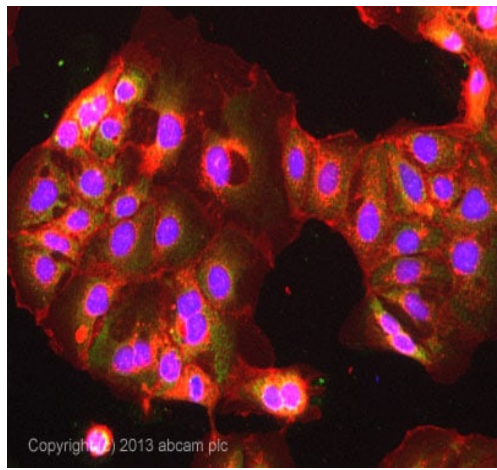
Observed band size: 23 kDa

Exposure time: 3 minutes

Blocking and diluting buffer: 5% NFDM /TBST

Human ARF-1 recombinant protein, (Cat#: [ab123538](#))

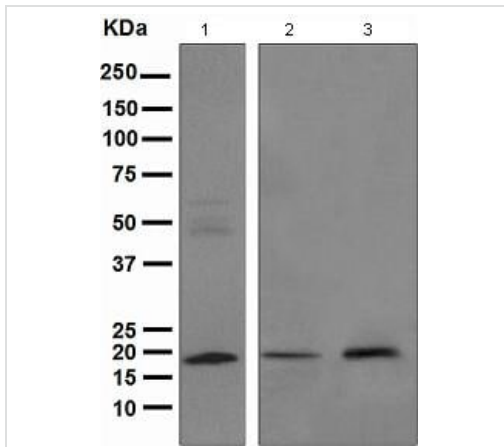
Human ARF-3 recombinant protein, (Cat#: [ab113581](#))



Copyright © 2013 abcam plc

Immunocytochemistry/ Immunofluorescence - Anti-ARF1 + ARF3 antibody [EPR443] (ab108347)

ICC/IF image of ab108347 stained CaCo2 cells. The cells were 100% methanol fixed (5 min) and then incubated in 1%BSA / 10% normal goat serum / 0.3M glycine in 0.1% PBS-Tween for 1h to permeabilise the cells and block non-specific protein-protein interactions. The cells were then incubated with the antibody ab108347 at 1/100 dilution overnight at +4°C. The secondary antibody (green) was DyLight® 488 goat anti- rabbit ([ab96899](#)) IgG (H+L) used at a 1/250 dilution for 1h. Alexa Fluor® 594 WGA was used to label plasma membranes (red) at a 1/200 dilution for 1h. DAPI was used to stain the cell nuclei (blue) at a concentration of 1.43µM.



Western blot - Anti-ARF1 + ARF3 antibody [EPR443] (ab108347)

All lanes : Anti-ARF1 + ARF3 antibody [EPR443] (ab108347) at 1/1000 dilution

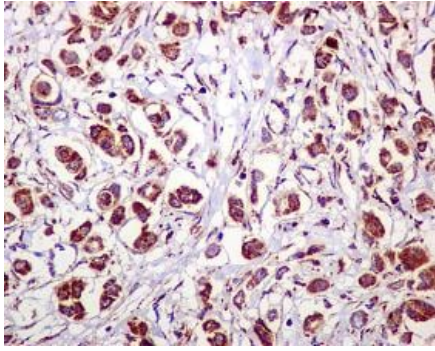
Lane 1 : Human fetal kidney tissue lysate

Lane 2 : Human fetal brain tissue lysate

Lane 3 : MCF7 cell lysate

Lysates/proteins at 10 µg per lane.

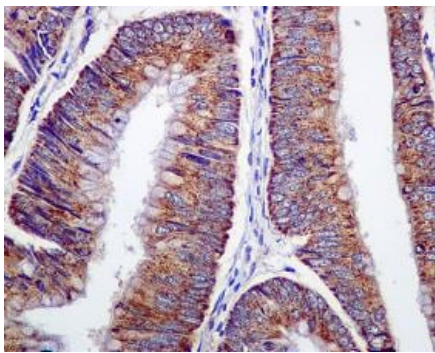
Predicted band size: 21 kDa



Immunohistochemistry (Formalin/PFA-fixed paraffin-embedded sections) - Anti-ARF1 + ARF3 antibody [EPR443] (ab108347)

Immunohistochemical analysis of ARF1 in paraffin embedded Human breast ductal carcinoma tissue, using ab108347 at a dilution of 1/100.

Perform heat mediated antigen retrieval before commencing with IHC staining protocol.



Immunohistochemistry (Formalin/PFA-fixed paraffin-embedded sections) - Anti-ARF1 + ARF3 antibody [EPR443] (ab108347)

Immunohistochemical analysis of ARF1 in paraffin embedded Human colonic adenocarcinoma tissue, using ab108347 at a dilution of 1/100.

Perform heat mediated antigen retrieval before commencing with IHC staining protocol.

Why choose a recombinant antibody?



Research with confidence
Consistent and reproducible results



Long-term and scalable supply
Recombinant technology



Success from the first experiment
Confirmed specificity



Ethical standards compliant
Animal-free production

Anti-ARF1 + ARF3 antibody [EPR443] (ab108347)

Please note: All products are "FOR RESEARCH USE ONLY. NOT FOR USE IN DIAGNOSTIC PROCEDURES"

Our Abpromise to you: Quality guaranteed and expert technical support

-
- Replacement or refund for products not performing as stated on the datasheet
 - Valid for 12 months from date of delivery
 - Response to your inquiry within 24 hours

 - We provide support in Chinese, English, French, German, Japanese and Spanish
 - Extensive multi-media technical resources to help you
 - We investigate all quality concerns to ensure our products perform to the highest standards

If the product does not perform as described on this datasheet, we will offer a refund or replacement. For full details of the Abpromise, please visit <https://www.abcam.cn/abpromise> or contact our technical team.

Terms and conditions

- Guarantee only valid for products bought direct from Abcam or one of our authorized distributors