

# Anti-Apoptosis enhancing nuclease antibody ab97915

## 2 图像

### 概述

产品名称	Anti-Apoptosis enhancing nuclease抗体
描述	兔多克隆抗体to Apoptosis enhancing nuclease
宿主	Rabbit
经测试应用	适用于: WB, IHC-P
种属反应性	与反应: Human
免疫原	Synthetic peptide, corresponding to a region within amino acids 236-297 of Apoptosis enhancing nuclease (NP_073604).
阳性对照	HeLa, HepG2 or MOLT4 cell lines.
常规说明	<p>The Life Science industry has been in the grips of a reproducibility crisis for a number of years. Abcam is leading the way in addressing this with our range of recombinant monoclonal antibodies and knockout edited cell lines for gold-standard validation. Please check that this product meets your needs before purchasing.</p> <p>If you have any questions, special requirements or concerns, please send us an inquiry and/or contact our Support team ahead of purchase. Recommended alternatives for this product can be found below, along with publications, customer reviews and Q&amp;As</p>

### 性能

形式	Liquid
存放说明	Shipped at 4°C. Upon delivery aliquot and store at -20°C or -80°C. Avoid repeated freeze / thaw cycles.
存储溶液	<p>pH: 7.00</p> <p>Preservative: 0.01% Thimerosal (merthiolate)</p> <p>Constituents: 1.21% Tris, 0.75% Glycine, 10% Glycerol (glycerin, glycerine)</p>
纯度	Immunogen affinity purified
克隆	多克隆
同种型	IgG

### 应用

The Abpromise guarantee

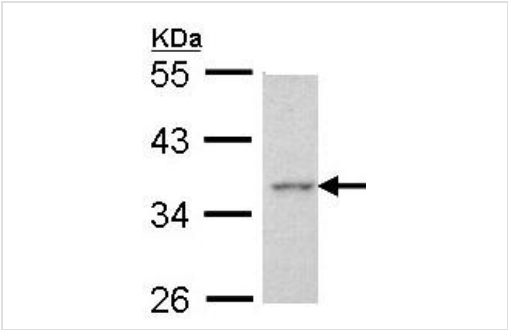
Abpromise™承诺保证使用ab97915于以下的经测试应用

“应用说明”部分 下显示的仅为推荐的起始稀释度;实际最佳的稀释度/浓度应由使用者检定。

应用	Ab评论	说明
WB		1/500 - 1/3000. Predicted molecular weight: 36 kDa.
IHC-P		1/100 - 1/250.

靶标	
功能	Exonuclease with activity against single- and double-stranded DNA and RNA. Mediates p53-induced apoptosis. When induced by p53 following DNA damage, digests double-stranded DNA to form single-stranded DNA and amplifies DNA damage signals, leading to enhancement of apoptosis.
序列相似性	Contains 1 exonuclease domain.
细胞定位	Nucleus. Nucleus > nucleolus. Localized predominantly in the nucleolus. Translocates from the nucleolus to the nucleoplasm upon apoptosis induction.

图片

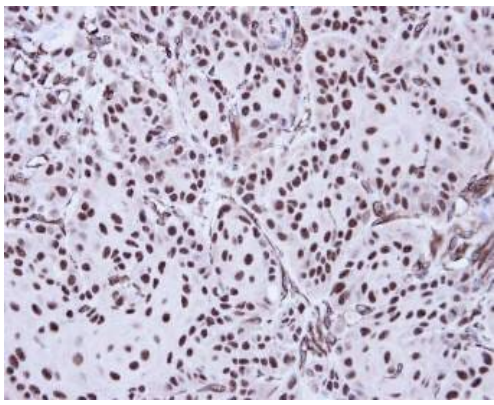


Western blot - Anti-Apoptosis enhancing nuclease antibody (ab97915)

Anti-Apoptosis enhancing nuclease antibody (ab97915) at 1/1000 dilution + HeLa whole cell lysate at 30 µg

**Predicted band size:** 36 kDa

10% SDS PAGE



Immunohistochemistry (Formalin/PFA-fixed paraffin-embedded sections) - Anti-Apoptosis enhancing nuclease antibody (ab97915)

ab97915, at 1/100 dilution, staining Apoptosis enhancing nuclease in Cal27 xenograft tissue by Immunohistochemistry. Formalin-fixed, paraffin-embedded section.

**Please note:** All products are "FOR RESEARCH USE ONLY. NOT FOR USE IN DIAGNOSTIC PROCEDURES"

### Our Abpromise to you: Quality guaranteed and expert technical support

---

- Replacement or refund for products not performing as stated on the datasheet
- Valid for 12 months from date of delivery
- Response to your inquiry within 24 hours
- We provide support in Chinese, English, French, German, Japanese and Spanish
- Extensive multi-media technical resources to help you
- We investigate all quality concerns to ensure our products perform to the highest standards

If the product does not perform as described on this datasheet, we will offer a refund or replacement. For full details of the Abpromise, please visit <https://www.abcam.cn/abpromise> or contact our technical team.

### Terms and conditions

---

- Guarantee only valid for products bought direct from Abcam or one of our authorized distributors