

Anti-Apolipoprotein L1/APOL1 antibody [EPR2907(2)] ab108315

重组 RabMAb

★★★★☆ **1 Abreviews** **14 References** **5 图像**

概述

产品名称	Anti-Apolipoprotein L1/APOL1 抗体[EPR2907(2)]
描述	兔单克隆抗体[EPR2907(2)] to Apolipoprotein L1/APOL1
宿主	Rabbit
经测试应用	适用于: WB, IP, Flow Cyt (Intra), ICC/IF 不适用于: IHC-P
种属反应性	与反应: Human
免疫原	Synthetic peptide. This information is proprietary to Abcam and/or its suppliers.
阳性对照	Human plasma, ovary cancer, and HepG2 cell lysates. ICC/IF: BxPC-3 cells.
常规说明	This product is a recombinant monoclonal antibody, which offers several advantages including: <ul style="list-style-type: none"> - High batch-to-batch consistency and reproducibility - Improved sensitivity and specificity - Long-term security of supply - Animal-free production For more information see here . Our RabMAb [®] technology is a patented hybridoma-based technology for making rabbit monoclonal antibodies. For details on our patents, please refer to RabMAb[®] patents . Mouse, Rat: We have preliminary internal testing data to indicate this antibody may not react with these species. Please contact us for more information.

性能

形式	Liquid
存放说明	Shipped at 4°C. Store at -20°C. Stable for 12 months at -20°C.
存储溶液	pH: 7.20 Preservative: 0.01% Sodium azide Constituents: 9% PBS, 40% Glycerol (glycerin, glycerine), 0.05% BSA, 50% Tissue culture supernatant
纯度	Protein A purified
克隆	单克隆

克隆编号 EPR2907(2)

同种型 IgG

应用

The Abpromise guarantee **Abpromise™**承诺保证使用ab108315于以下的经测试应用

“应用说明”部分下显示的仅为推荐的起始稀释度;实际最佳的稀释度/浓度应由使用者检定。

应用	Ab评论	说明
WB	★★★★★ (1)	1/1000 - 1/10000. Predicted molecular weight: 44 kDa.
IP		1/10 - 1/100.
Flow Cyt (Intra)		1/10 - 1/100. ab172730 - Rabbit monoclonal IgG, is suitable for use as an isotype control with this antibody.
ICC/IF		1/50.

应用说明 Is unsuitable for IHC-P.

靶标

功能 May play a role in lipid exchange and transport throughout the body. May participate in reverse cholesterol transport from peripheral cells to the liver.

组织特异性 Plasma. Found on APOA-I-containing high density lipoprotein (HDL3). Expressed in pancreas, lung, prostate, liver, placenta and spleen.

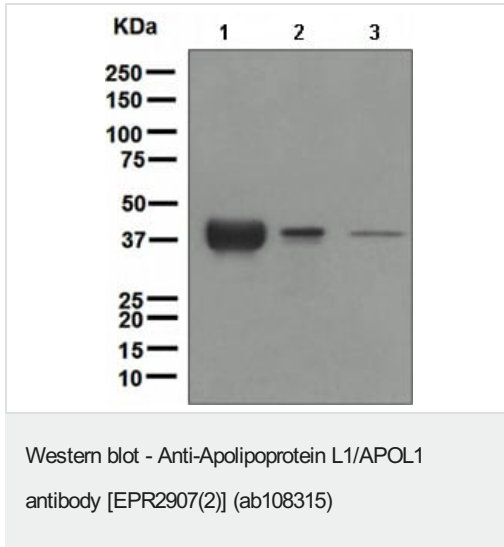
疾病相关 Defects in APOL1 are the cause of focal segmental glomerulosclerosis type 4 (FSGS4) [MIM:612551]. It is a renal pathology defined by the presence of segmental sclerosis in glomeruli and resulting in proteinuria, reduced glomerular filtration rate and edema. Renal insufficiency often progresses to end-stage renal disease, a highly morbid state requiring either dialysis therapy or kidney transplantation.

序列相似性 Belongs to the apolipoprotein L family.

翻译后修饰 Phosphorylation sites are present in the extracellular medium.

细胞定位 Secreted.

图片



All lanes : Anti-Apolipoprotein L1/APOL1 antibody [EPR2907(2)] (ab108315) at 1/1000 dilution

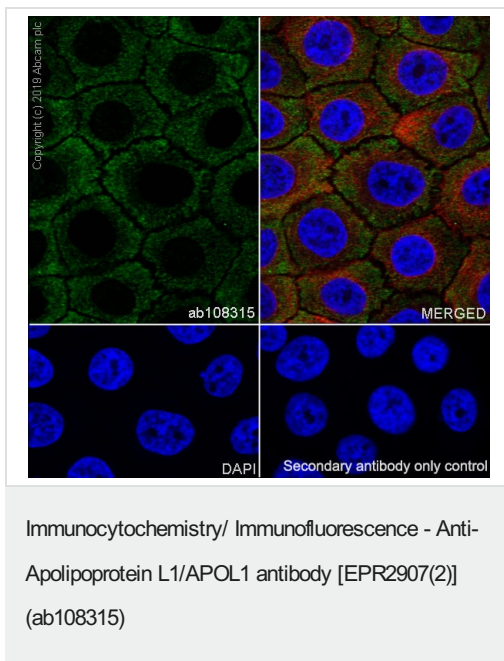
Lane 1 : Human plasma lysate

Lane 2 : Human ovary cancer lysate

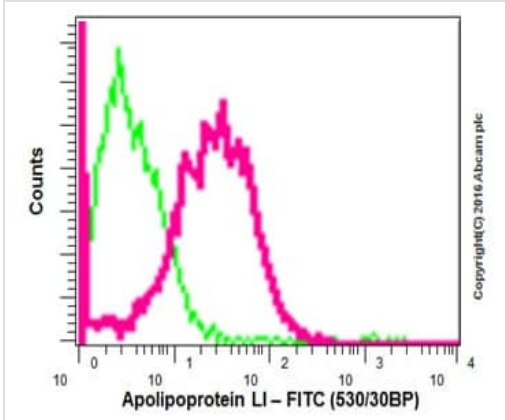
Lane 3 : HepG2 cell lysate

Lysates/proteins at 10 µg per lane.

Predicted band size: 44 kDa

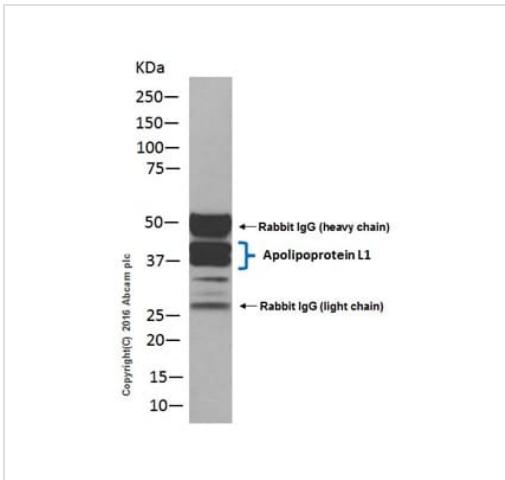


Immunocytochemistry/ Immunofluorescence analysis of BxPC-3 (human pancreas adenocarcinoma epithelial cell) cells labeling Apolipoprotein L1/APOL1 with purified ab108315 at 1/50 dilution (9.2 µg/mL). Cells were fixed in 4% Paraformaldehyde and permeabilized with 0.1% tritonX-100. Cells were counterstained with **ab195889** Anti-alpha Tubulin antibody [DM1A] - Microtubule Marker (Alexa Fluor® 594) 1/200 (2.5 µg/mL). Goat anti rabbit IgG (Alexa Fluor® 488, **ab150077**) was used as the secondary antibody at 1/1000 (2 µg/mL) dilution. DAPI (blue) was used as nuclear counterstain. **ab195889** Anti-alpha Tubulin antibody [DM1A] - Microtubule Marker (Alexa Fluor® 594) 1/200 (2.5 µg/mL) was used as the secondary antibody only control.



Flow Cytometry (Intracellular) - Anti-Apolipoprotein L1/APOL1 antibody [EPR2907(2)] (ab108315)

Intracellular flow cytometric analysis of 2% paraformaldehyde-fixed HepG2 (Human hepatocellular carcinoma) cell line labeling Apolipoprotein L 1/APOL1 with ab108315 at 1/70 dilution (red) compared with a Rabbit IgG, monoclonal [EPR25A] - Isotype Control (**ab172730**) (Green). Goat anti Rabbit IgG (FITC) at 1/150 dilution was used as the secondary antibody.



Immunoprecipitation - Anti-Apolipoprotein L1/APOL1 antibody [EPR2907(2)] (ab108315)

Apolipoprotein L 1/APOL1 was immunoprecipitated from 1mg of Human plasma with ab108315 at 1/40 dilution.

Western blot was performed from the immunoprecipitate using ab108315 at 1/1000 dilution.

Goat Anti-Rabbit IgG peroxidase conjugated, was used as secondary antibody at 1/1000 dilution.

Lane 1: Human plasma

Blocking and dilution buffer and concentration: 5% NFDN/TBST.

Exposure time: 10 seconds.

Why choose a recombinant antibody?



Research with confidence
Consistent and reproducible results



Long-term and scalable supply
Recombinant technology



Success from the first experiment
Confirmed specificity



Ethical standards compliant
Animal-free production

Anti-Apolipoprotein L1/APOL1 antibody
[EPR2907(2)] (ab108315)

Please note: All products are "FOR RESEARCH USE ONLY. NOT FOR USE IN DIAGNOSTIC PROCEDURES"

Our Abpromise to you: Quality guaranteed and expert technical support

- Replacement or refund for products not performing as stated on the datasheet
- Valid for 12 months from date of delivery
- Response to your inquiry within 24 hours
- We provide support in Chinese, English, French, German, Japanese and Spanish
- Extensive multi-media technical resources to help you
- We investigate all quality concerns to ensure our products perform to the highest standards

If the product does not perform as described on this datasheet, we will offer a refund or replacement. For full details of the Abpromise, please visit <https://www.abcam.cn/abpromise> or contact our technical team.

Terms and conditions

- Guarantee only valid for products bought direct from Abcam or one of our authorized distributors