

# Anti-Apolipoprotein CIII antibody ab21032

**5 References**   [2 图像](#)

### 概述

产品名称	Anti-Apolipoprotein CIII抗体
描述	兔多克隆抗体to Apolipoprotein CIII
宿主	Rabbit
特异性	Specifically binds to human Apo CIII.
经测试应用	适用于: ICC/IF, Sandwich ELISA, ELISA, WB
种属反应性	与反应: Human, Monkey
免疫原	Full length protein corresponding to Human Apolipoprotein CIII. Native protein
常规说明	<p>The Life Science industry has been in the grips of a reproducibility crisis for a number of years. Abcam is leading the way in addressing this with our range of recombinant monoclonal antibodies and knockout edited cell lines for gold-standard validation. Please check that this product meets your needs before purchasing.</p> <p>If you have any questions, special requirements or concerns, please send us an inquiry and/or contact our Support team ahead of purchase. Recommended alternatives for this product can be found below, along with publications, customer reviews and Q&amp;As</p>

### 性能

形式	Liquid
存放说明	Shipped at 4°C. Store at +4°C short term (1-2 weeks). Upon delivery aliquot. Store at -20°C. Avoid freeze / thaw cycle.
存储溶液	Preservative: 0.02% Sodium azide Constituents: PBS, 0.0292% EDTA, 0.435% Sodium chloride
纯度	Immunogen affinity purified
纯化说明	Purified by Human Apo CIII-Sepharose affinity column.
克隆	多克隆
同种型	IgG

### 应用

The Abpromise guarantee

**Abpromise™** 承诺保证使用ab21032于以下的经测试应用

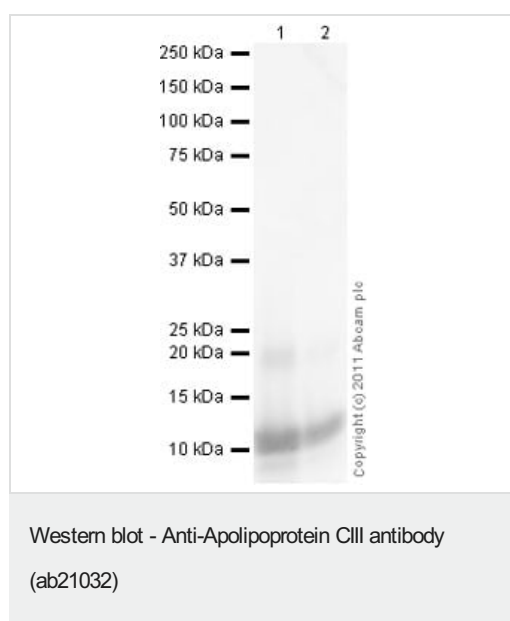
“应用说明”部分 下显示的仅为推荐的起始稀释度;实际最佳的稀释度/浓度应由使用者检定。

应用	Ab评论	说明
ICC/IF		Use a concentration of 5 µg/ml.
Sandwich ELISA		Use at an assay dependent concentration. PubMed: 21371998
ELISA		1/5000 - 1/40000. Can be paired for ELISA with <b><u>Biotin Goat polyclonal to Apolipoprotein CIII (ab21024)</u></b> .
WB		Use at an assay dependent concentration. Predicted molecular weight: 11 kDa.

## 靶标

功能	Inhibits lipoprotein lipase and hepatic lipase and decreases the uptake of lymph chylomicrons by hepatic cells. This suggests that it delays the catabolism of triglyceride-rich particles.
组织特异性	Constitutes 50% of the protein fraction of VLDL and 2% of that of HDL. Synthesized predominantly in liver and to a lesser degree in intestine.
疾病相关	Defects in APOC3 may be a cause of hyperalphalipoproteinemia (HYPALIP) [MIM:143470]. Affected individuals show high levels of alpha-lipoprotein (high density lipoprotein/HDL).
序列相似性	Belongs to the apolipoprotein C3 family.
翻译后修饰	O-linked glycan consists of Gal-GalNAc disaccharide, further modified with up to 3 sialic acid residues. O-glycosylated on Thr-94 with a core 1 or possibly core 8 glycan.
细胞定位	Secreted.

## 图片



**All lanes :** Anti-Apolipoprotein CIII antibody (ab21032) at 1 µg/ml

**Lane 1 :** Native Human Apolipoprotein CIII (**ab77944**) at 0.1 µg

**Lane 2 :** Native Human Apolipoprotein CIII (**ab77944**) at 0.01 µg

### Secondary

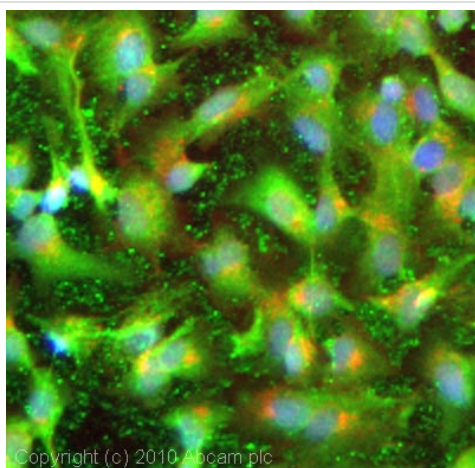
**All lanes :** Goat Anti-Rabbit IgG H&L (HRP) preadsorbed (**ab97080**) at 1/5000 dilution

Developed using the ECL technique.

Performed under reducing conditions.

**Predicted band size:** 11 kDa

**Exposure time:** 1 minute



Immunocytochemistry/ Immunofluorescence - Anti-Apolipoprotein CIII antibody (ab21032)

ICC/IF image of ab21032 stained HepG2 (Human liver hepatocellular carcinoma cell line) cells.

The cells were fixed in 4% formaldehyde for 10 minutes and then incubated in 1% BSA / 10% normal goat serum / 0.3M glycine in 0.1% PBS-Tween for 1 hour to permeabilize the cells and block non-specific protein-protein interactions. The cells were then incubated with the antibody (ab21032, 5 µg/ml) overnight at +4°C. The secondary antibody (green) was Alexa-Fluor® 488 goat anti-rabbit IgG (H+L) used at a 1/1000 dilution for 1 hour. Alexa-Fluor® 594 WGA was used to label plasma membranes (red) at a 1/200 dilution for 1 hour.

DAPI was used to stain the cell nuclei (blue) at a concentration of 1.43 µM.

**Please note:** All products are "FOR RESEARCH USE ONLY. NOT FOR USE IN DIAGNOSTIC PROCEDURES"

### Our Abpromise to you: Quality guaranteed and expert technical support

---

- Replacement or refund for products not performing as stated on the datasheet
- Valid for 12 months from date of delivery
- Response to your inquiry within 24 hours
- We provide support in Chinese, English, French, German, Japanese and Spanish
- Extensive multi-media technical resources to help you
- We investigate all quality concerns to ensure our products perform to the highest standards

If the product does not perform as described on this datasheet, we will offer a refund or replacement. For full details of the Abpromise, please visit <https://www.abcam.cn/abpromise> or contact our technical team.

### Terms and conditions

---

- Guarantee only valid for products bought direct from Abcam or one of our authorized distributors