


### Anti-Apolipoprotein A I antibody ab64308

★★★★★ [3 Abreviews](#) [9 References](#) [3 图像](#)

#### 概述

产品名称	Anti-Apolipoprotein A I抗体
描述	兔多克隆抗体to Apolipoprotein A I
宿主	Rabbit
经测试应用	适用于: Sandwich ELISA, WB, ICC/IF
种属反应性	与反应: Human 预测可用于: Baboon 
免疫原	Synthetic peptide conjugated to KLH derived from within residues 200 to the C-terminus of Human Apolipoprotein A I.参阅Abcam的专有抗源政策(Peptide available as <a href="#">ab66674</a> .)
阳性对照	Recombinant Human Apolipoprotein A I ( <a href="#">ab50239</a> ) can be used as a positive control in WB. This antibody gave a positive signal in the following Human Tissue Lysates: Testis, Ovary, Lung, Thymus ICC/IF: HepG2 cells
常规说明	<p>The Life Science industry has been in the grips of a reproducibility crisis for a number of years. Abcam is leading the way in addressing this with our range of recombinant monoclonal antibodies and knockout edited cell lines for gold-standard validation. Please check that this product meets your needs before purchasing.</p> <p>If you have any questions, special requirements or concerns, please send us an inquiry and/or contact our Support team ahead of purchase. Recommended alternatives for this product can be found below, along with publications, customer reviews and Q&amp;As</p>

#### 性能

形式	Liquid
存放说明	Shipped at 4°C. Store at +4°C short term (1-2 weeks). Upon delivery aliquot. Store at -20°C or -80°C. Avoid freeze / thaw cycle.
存储溶液	pH: 7.40 Preservative: 0.02% Sodium azide Constituents: PBS, 1% BSA

Batches of this product that have a concentration < 1mg/ml may have BSA added as a stabilising agent. If you would like information about the formulation of a specific lot, please contact our scientific support team who will be happy to help.

纯度	Immunogen affinity purified
克隆	多克隆
同种型	IgG

## 应用

**The Abpromise guarantee**      **Abpromise™**承诺保证使用ab64308于以下的经测试应用

“应用说明”部分下显示的仅为推荐的起始稀释度;实际最佳的稀释度/浓度应由使用者检定。

应用	Ab评论	说明
Sandwich ELISA		Use a concentration of 0.5 µg/ml. For sandwich ELISA, use this antibody as Detection at 0.5µg/ml with <b>ab20918</b> as Capture.
WB	★★★★☆ (2)	Use a concentration of 1 µg/ml. Detects a band of approximately 27 kDa (predicted molecular weight: 31 kDa).
ICC/IF		Use a concentration of 5 µg/ml.

## 靶标

功能	Participates in the reverse transport of cholesterol from tissues to the liver for excretion by promoting cholesterol efflux from tissues and by acting as a cofactor for the lecithin cholesterol acyltransferase (LCAT). As part of the SPAP complex, activates spermatozoa motility.
组织特异性	Major protein of plasma HDL, also found in chylomicrons. Synthesized in the liver and small intestine.
疾病相关	<p>Defects in APOA1 are a cause of high density lipoprotein deficiency type 2 (HDL2) [MIM:604091]; also known as familial hypoalphalipoproteinemia (FHA). Inheritance is autosomal dominant.</p> <p>Defects in APOA1 are a cause of the low HDL levels observed in high density lipoprotein deficiency type 1 (HDL1) [MIM:205400]; also known as analphalipoproteinemia or Tangier disease (TGD). HDL1 is a recessive disorder characterized by the absence of plasma HDL, accumulation of cholesteryl esters, premature coronary artery disease, hepatosplenomegaly, recurrent peripheral neuropathy and progressive muscle wasting and weakness. In HDL1 patients, ApoA-I fails to associate with HDL probably because of the faulty conversion of pro-ApoA-I molecules into mature chains, either due to a defect in the converting enzyme activity or a specific structural defect in Tangier ApoA-I.</p> <p>Defects in APOA1 are the cause of amyloid polyneuropathy-nephropathy Iowa type (AMYLIOWA) [MIM:107680]; also known as amyloidosis van Allen type or familial amyloid polyneuropathy type III. AMYLIOWA is a hereditary generalized amyloidosis due to deposition of amyloid mainly constituted by apolipoprotein A1. The clinical picture is dominated by neuropathy in the early stages of the disease and nephropathy late in the course. Death is due in most cases to renal amyloidosis. Severe peptic ulcer disease can occur in some and hearing loss is frequent. Cataracts is present in several, but vitreous opacities are not observed.</p> <p>Defects in APOA1 are a cause of amyloidosis type 8 (AMYL8) [MIM:105200]; also known as systemic non-neuropathic amyloidosis or Ostertag-type amyloidosis. AMYL8 is a hereditary generalized amyloidosis due to deposition of apolipoprotein A1, fibrinogen and lysozyme</p>

amyloids. Viscera are particularly affected. There is no involvement of the nervous system. Clinical features include renal amyloidosis resulting in nephrotic syndrome, arterial hypertension, hepatosplenomegaly, cholestasis, petechial skin rash.

**序列相似性**

Belongs to the apolipoprotein A1/A4/E family.

**翻译后修饰**

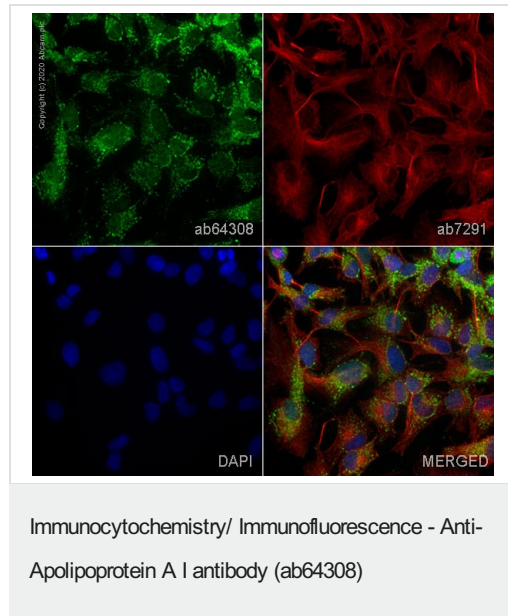
Palmitoylated.

Phosphorylation sites are present in the extracellular medium.

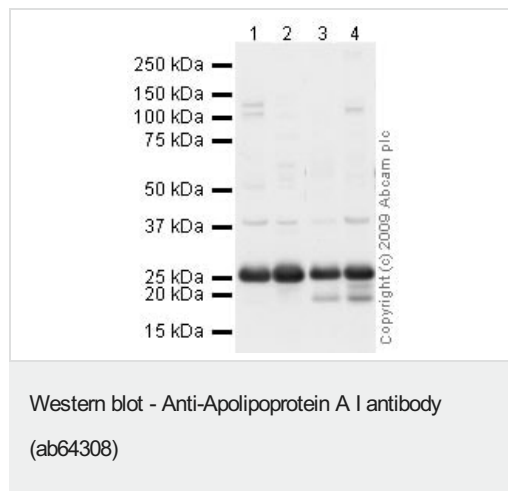
**细胞定位**

Secreted.

**图片**



ab64308 staining Apolipoprotein A I in HepG2 cells. The cells were fixed with 4% paraformaldehyde (10 min), permeabilized with 0.1% PBS-Triton X-100 for 5 minutes and then blocked with 1% BSA/10% normal goat serum/0.3M glycine in 0.1%PBS-Tween for 1h. The cells were then incubated overnight at 4°C with ab64308 at 5µg/ml and **ab7291**, Mouse monoclonal [DM1A] to alpha Tubulin - Loading Control. Cells were then incubated with **ab150081**, Goat polyclonal Secondary Antibody to Rabbit IgG - H&L (Alexa Fluor® 488), pre-adsorbed at 1/1000 dilution (shown in green) and **ab150120**, Goat polyclonal Secondary Antibody to Mouse IgG - H&L (Alexa Fluor® 594), pre-adsorbed at 1/1000 dilution (shown in pseudocolour red). Nuclear DNA was labelled with DAPI (shown in blue).



**All lanes** : Anti-Apolipoprotein A I antibody (ab64308) at 1 µg/ml

**Lane 1** : Human testis tissue lysate - total protein (**ab30257**)

**Lane 2** : Human ovary tissue lysate - total protein (**ab30222**)

**Lane 3** : Lung (Human) Tissue Lysate - adult normal tissue

**Lane 4** : Human thymus tissue lysate - total protein (**ab30146**)

Lysates/proteins at 10 µg per lane.

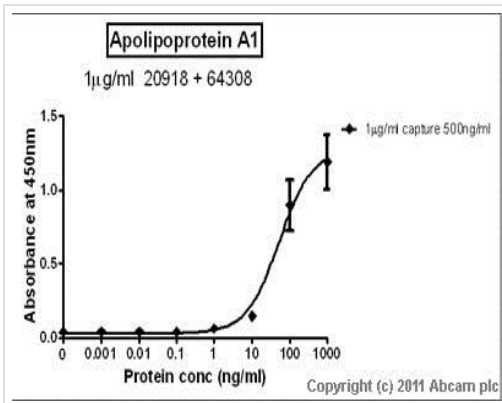
**Secondary**

**All lanes** : Goat polyclonal to Rabbit IgG - H&L - Pre-Adsorbed (HRP) at 1/3000 dilution

Performed under reducing conditions.

**Predicted band size:** 31 kDa

**Observed band size:** 27 kDa



Standard Curve for Apolipoprotein A I (Analyte: **ab50239**) dilution range 1pg/ml to 1ug/ml using Capture Antibody Mouse monoclonal [1409] to Apolipoprotein A I (**ab20918**) at 1ug/ml and Detector Antibody Rabbit polyclonal to Apolipoprotein A I (**ab64308**) at 0.5ug/ml

Sandwich ELISA - Anti-Apolipoprotein A I antibody (ab64308)

**Please note:** All products are "FOR RESEARCH USE ONLY. NOT FOR USE IN DIAGNOSTIC PROCEDURES"

### Our Abpromise to you: Quality guaranteed and expert technical support

- Replacement or refund for products not performing as stated on the datasheet
- Valid for 12 months from date of delivery
- Response to your inquiry within 24 hours
- We provide support in Chinese, English, French, German, Japanese and Spanish
- Extensive multi-media technical resources to help you
- We investigate all quality concerns to ensure our products perform to the highest standards

If the product does not perform as described on this datasheet, we will offer a refund or replacement. For full details of the Abpromise, please visit <https://www.abcam.cn/abpromise> or contact our technical team.

### Terms and conditions

- Guarantee only valid for products bought direct from Abcam or one of our authorized distributors