

### Anti-APLP1 antibody ab94957

#### 2 图像

#### 概述

---

|              |   |
|--------------|---|
| <b>产品名称</b>  | Anti-APLP1抗体  |
| <b>描述</b>    | 兔多克隆抗体to APLP1  |
| <b>宿主</b>    | Rabbit  |
| <b>经测试应用</b> | <b>适用于:</b> WB, ICC/IF  |
| <b>种属反应性</b> | <b>与反应:</b> Human   |
| <b>免疫原</b>   | Synthetic peptide corresponding to Human APLP1 aa 200-300 conjugated to keyhole limpet haemocyanin.<br>(Peptide available as <a href="#">ab106419</a> )   |
| <b>阳性对照</b>  | This antibody gave a positive signal in Human Brain Tissue Lysate. This antibody gave a positive result when used in the following methanol fixed cell lines:SKNSH.   |
| <b>常规说明</b>  | <p>The Life Science industry has been in the grips of a reproducibility crisis for a number of years. Abcam is leading the way in addressing this with our range of recombinant monoclonal antibodies and knockout edited cell lines for gold-standard validation. Please check that this product meets your needs before purchasing.</p> <p>If you have any questions, special requirements or concerns, please send us an inquiry and/or contact our Support team ahead of purchase. Recommended alternatives for this product can be found below, along with publications, customer reviews and Q&amp;As</p> |

#### 性能

---

|             |   |
|-------------|---|
| <b>形式</b>   | Liquid  |
| <b>存放说明</b> | Shipped at 4°C. Store at +4°C short term (1-2 weeks). Upon delivery aliquot. Store at -20°C or -80°C. Avoid freeze / thaw cycle.  |
| <b>存储溶液</b> | pH: 7.40<br>Preservative: 0.02% Sodium azide<br>Constituent: PBS  |
| <b>纯度</b>   | Batches of this product that have a concentration < 1mg/ml may have BSA added as a stabilising agent. If you would like information about the formulation of a specific lot, please contact our scientific support team who will be happy to help.<br>Immunogen affinity purified |

克隆 多克隆  
同种型 IgG

## 应用

**The Abpromise guarantee** **Abpromise™**承诺保证使用ab94957于以下的经测试应用

“应用说明”部分 下显示的仅为推荐的起始稀释度;实际最佳的稀释度/浓度应由使用者检定。

| 应用     | Ab评论 | 说明   |
|--------|------|--|
| WB     |      | Use a concentration of 1 µg/ml. Detects a band of approximately 75 kDa (predicted molecular weight: 72 kDa). |
| ICC/IF |      | Use a concentration of 5 µg/ml.  |

## 靶标

**功能** May play a role in postsynaptic function. The C-terminal gamma-secretase processed fragment, ALID1, activates transcription activation through APBB1 (Fe65) binding (By similarity). Couples to JIP signal transduction through C-terminal binding. May interact with cellular G-protein signaling pathways. Can regulate neurite outgrowth through binding to components of the extracellular matrix such as heparin and collagen I.  
The gamma-CTF peptide, C30, is a potent enhancer of neuronal apoptosis.

**组织特异性** Expressed in the cerebral cortex where it is localized to the postsynaptic density (PSD).

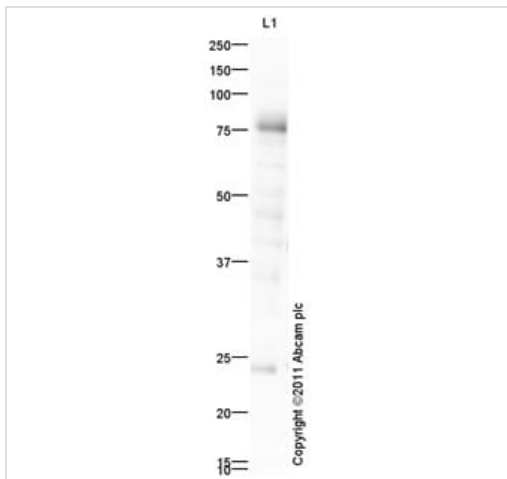
**序列相似性** Belongs to the APP family.

**结构域** The NPXY sequence motif found in many tyrosine-phosphorylated proteins is required for the specific binding of the PID domain. However, additional amino acids either N- or C-terminal to the NPXY motif are often required for complete interaction. The NPXY site is also involved in clathrin-mediated endocytosis.

**翻译后修饰** Proteolytically cleaved by caspases during neuronal apoptosis. Cleaved, in vitro, at Asp-620 by caspase-3.  
N- and O-glycosylated. O-glycosylation with core 1 or possibly core 8 glycans. Glycosylation on Ser-227 is the preferred site to Thr-228.

**细胞定位** Cell membrane and Cytoplasm. C-terminally processed in the Golgi complex.

## 图片



Western blot - Anti-APLP1 antibody (ab94957)

Anti-APLP1 antibody (ab94957) at 1 µg/ml + Human brain tissue lysate - total protein ([ab29466](#)) at 10 µg

### Secondary

Goat Anti-Rabbit IgG H&L (HRP) preadsorbed ([ab97080](#)) at 1/5000 dilution

Developed using the ECL technique.

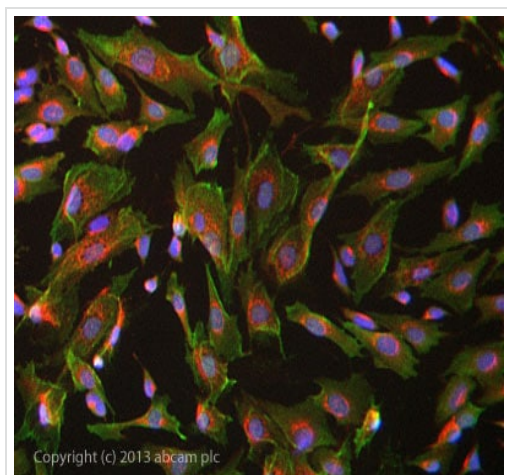
Performed under reducing conditions.

**Predicted band size:** 72 kDa

**Observed band size:** 75 kDa

**Additional bands at:** 24 kDa. We are unsure as to the identity of these extra bands.

**Exposure time:** 2 minutes



Immunocytochemistry/ Immunofluorescence - Anti-APLP1 antibody (ab94957)

ab94957 stained SKNSH cells. The cells were 100% methanol fixed (5 min) and then incubated in 1%BSA / 10% normal goat serum / 0.3M glycine in 0.1% PBS-Tween for 1h to permeabilise the cells and block non-specific protein-protein interactions. The cells were then incubated with the antibody ab94957 at 5µg/ml overnight at +4°C. The secondary antibody (green) was DyLight® 488 goat anti- rabbit ([ab96899](#)) IgG (H+L) used at a 1/1000 dilution for 1h. Alexa Fluor® 594 WGA was used to label plasma membranes (red) at a 1/200 dilution for 1h. DAPI was used to stain the cell nuclei (blue) at a concentration of 1.43µM.

**Please note:** All products are "FOR RESEARCH USE ONLY. NOT FOR USE IN DIAGNOSTIC PROCEDURES"

## **Our Abpromise to you: Quality guaranteed and expert technical support**

---

- Replacement or refund for products not performing as stated on the datasheet
- Valid for 12 months from date of delivery
- Response to your inquiry within 24 hours
  
- We provide support in Chinese, English, French, German, Japanese and Spanish
- Extensive multi-media technical resources to help you
- We investigate all quality concerns to ensure our products perform to the highest standards

If the product does not perform as described on this datasheet, we will offer a refund or replacement. For full details of the Abpromise, please visit <https://www.abcam.cn/abpromise> or contact our technical team.

## **Terms and conditions**

---

- Guarantee only valid for products bought direct from Abcam or one of our authorized distributors