


Anti-APLF antibody ab105446

2 图像

概述	
产品名称	Anti-APLF 抗体
描述	兔多克隆抗体 to APLF
宿主	Rabbit
特异性	From Mar 2024, QC testing of replenishment batches of this polyclonal changed. All tested and expected application and reactive species combinations are still covered by our Abcam product promise. However, we no longer test all applications. For more information on a specific batch, please contact our Scientific Support who will be happy to help.
经测试应用	适用于: ICC/IF, WB
种属反应性	与反应: Human 预测可用于: Horse, Macaque monkey, Orangutan 
免疫原	Synthetic peptide corresponding to Human APLF aa 100-200 conjugated to keyhole limpet haemocyanin. (Peptide available as <b>ab119169</b> )
阳性对照	This antibody gave a positive signal in Human Brain tissue lysate.
常规说明	<p>The Life Science industry has been in the grips of a reproducibility crisis for a number of years. Abcam is leading the way in addressing this with our range of recombinant monoclonal antibodies and knockout edited cell lines for gold-standard validation. Please check that this product meets your needs before purchasing.</p> <p>If you have any questions, special requirements or concerns, please send us an inquiry and/or contact our Support team ahead of purchase. Recommended alternatives for this product can be found below, along with publications, customer reviews and Q&amp;As</p>
性能	
形式	Liquid
存放说明	Shipped at 4°C. Store at +4°C short term (1-2 weeks). Upon delivery aliquot. Store at -20°C or -80°C. Avoid freeze / thaw cycle.
存储溶液	pH: 7.40 Preservative: 0.02% Sodium azide Constituent: PBS

Batches of this product that have a concentration < 1mg/ml may have BSA added as a stabilising agent. If you would like information about the formulation of a specific lot, please contact our scientific support team who will be happy to help.

纯度	Immunogen affinity purified
克隆	多克隆
同种型	IgG

## 应用

### The Abpromise guarantee

**Abpromise™**承诺保证使用ab105446于以下的经测试应用

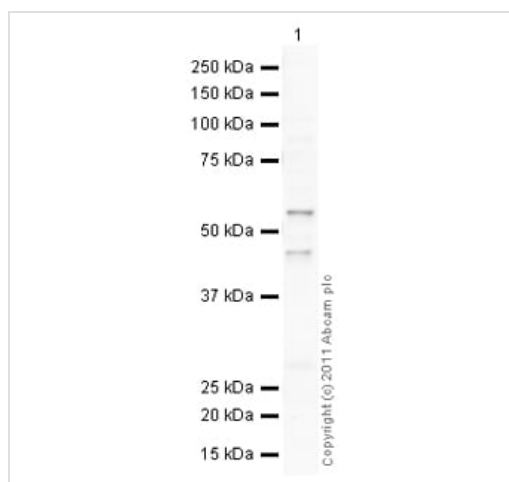
“应用说明”部分 下显示的仅为推荐的起始稀释度;实际最佳的稀释度/浓度应由使用者检定。

应用	Ab评论	说明
ICC/IF		Use a concentration of 5 µg/ml.
WB		Use a concentration of 1 µg/ml. Detects a band of approximately 57 kDa (predicted molecular weight: 57 kDa).

## 靶标

功能	Nuclease involved in single-strand and double-strand DNA break repair. Recruited to sites of DNA damage through interaction with poly(ADP-ribose), a polymeric post-translational modification synthesized transiently at sites of chromosomal damage to accelerate DNA strand break repair reactions. Displays apurinic-apyrimidinic (AP) endonuclease and 3'-5' exonuclease activities in vitro. Also able to introduce nicks at hydroxyuracil and other types of pyrimidine base damage.
序列相似性	Belongs to the APLF family. Contains 1 FHA-like domain. Contains 2 PBZ-type zinc fingers.
结构域	The PBZ-type zinc fingers (also named CYR) mediate non-covalent poly(ADP-ribose)-binding. Poly(ADP-ribose)-binding is dependent on the presence of zinc and promotes its recruitment to DNA damage sites. The FHA-like domain mediates interaction with XRCC1 and XRCC4.
翻译后修饰	Poly-ADP-ribosylated. In addition to binding non covalently poly(ADP-ribose) via its PBZ-type zinc fingers, the protein is also covalently poly-ADP-ribosylated by PARP1. Phosphorylated in an ATM-dependent manner upon double-strand DNA break.
细胞定位	Nucleus. Cytoplasm > cytosol. Localizes to DNA damage sites. Accumulates at single-strand breaks and double-strand breaks via the PBZ-type zinc fingers.

## 图片



Western blot - Anti-APLF antibody (ab105446)

Anti-APLF antibody (ab105446) at 1 µg/ml + Human brain tissue lysate - total protein ([ab29466](#)) at 10 µg

#### Secondary

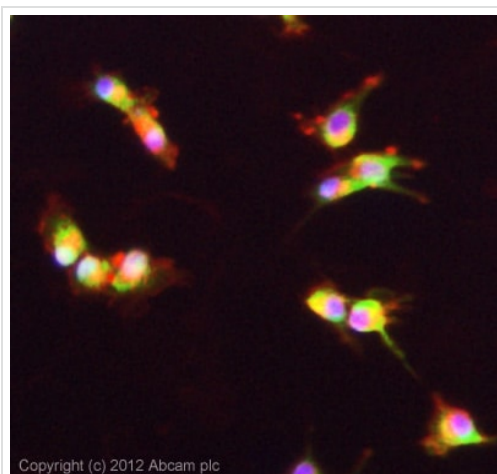
Goat Anti-Rabbit IgG H&L (HRP) preadsorbed ([ab97080](#)) at 1/5000 dilution

**Predicted band size:** 57 kDa

**Observed band size:** 57 kDa

**Additional bands at:** 46 kDa. We are unsure as to the identity of these extra bands.

**Exposure time:** 4 minutes



Immunocytochemistry/ Immunofluorescence - Anti-APLF antibody (ab105446)

ICC/IF image of ab105446 stained U87MG cells. The cells were 4% formaldehyde fixed (10 min) and then incubated in 1%BSA / 10% normal goat serum / 0.3M glycine in 0.1% PBS-Tween for 1h to permeabilise the cells and block non-specific protein-protein interactions. The cells were then incubated with the antibody (ab105446, 5µg/ml) overnight at +4°C. The secondary antibody (green) was [ab96899](#), DyLight® 488 goat anti-rabbit IgG (H+L) used at a 1/250 dilution for 1h. Alexa Fluor® 594 WGA was used to label plasma membranes (red) at a 1/200 dilution for 1h. DAPI was used to stain the cell nuclei (blue) at a concentration of 1.43µM.

**Please note:** All products are "FOR RESEARCH USE ONLY. NOT FOR USE IN DIAGNOSTIC PROCEDURES"

#### Our Abpromise to you: Quality guaranteed and expert technical support

- Replacement or refund for products not performing as stated on the datasheet
- Valid for 12 months from date of delivery
- Response to your inquiry within 24 hours
- We provide support in Chinese, English, French, German, Japanese and Spanish
- Extensive multi-media technical resources to help you
- We investigate all quality concerns to ensure our products perform to the highest standards

If the product does not perform as described on this datasheet, we will offer a refund or replacement. For full details of the Abpromise, please visit <https://www.abcam.cn/abpromise> or contact our technical team.

#### **Terms and conditions**

---

- Guarantee only valid for products bought direct from Abcam or one of our authorized distributors