


### Anti-APG5L/ATG5 antibody [EPR4797] ab109490

敲除验证
重组
RabMAb

[37 References](#)
[8 图像](#)

#### 概述

<b>产品名称</b>	Anti-APG5L/ATG5抗体[EPR4797]
<b>描述</b>	兔单克隆抗体[EPR4797] to APG5L/ATG5
<b>宿主</b>	Rabbit
<b>经测试应用</b>	<b>适用于:</b> Flow Cyt (Intra), WB, IHC-P <b>不适用于:</b> IP
<b>种属反应性</b>	<b>与反应:</b> Mouse, Human <b>预测可用于:</b> Rat 
<b>免疫原</b>	Synthetic peptide. This information is proprietary to Abcam and/or its suppliers.
<b>阳性对照</b>	THP1, Raji, HeLa, HT1080 and Human fetal kidney lysates; Human breast carcinoma and Human kidney tissues.
<b>常规说明</b>	<p>This product is a recombinant monoclonal antibody, which offers several advantages including:</p> <ul style="list-style-type: none"> <li>- High batch-to-batch consistency and reproducibility</li> <li>- Improved sensitivity and specificity</li> <li>- Long-term security of supply</li> <li>- Animal-free production</li> </ul> <p>For more information <a href="#">see here</a>.</p> <p>Our RabMAb<sup>®</sup> technology is a patented hybridoma-based technology for making rabbit monoclonal antibodies. For details on our patents, please refer to <a href="#">RabMAb<sup>®</sup> patents</a>.</p>

#### 性能

<b>形式</b>	Liquid
<b>存放说明</b>	Shipped at 4°C. Store at +4°C short term (1-2 weeks). Upon delivery aliquot. Store at -20°C. Avoid freeze / thaw cycle.
<b>存储溶液</b>	pH: 7.20 Preservative: 0.05% Sodium azide Constituents: 40% Glycerol (glycerin, glycerine), 0.1% BSA, 9.85% Tris glycine, 50% Tissue culture supernatant
<b>纯度</b>	Tissue culture supernatant
<b>克隆</b>	单克隆

克隆编号                                  EPR4797

同种型                                       IgG

## 应用

**The Abpromise guarantee                  Abpromise™承诺保证使用ab109490于以下的经测试应用**

“应用说明”部分下显示的仅为推荐的起始稀释度；实际最佳的稀释度/浓度应由使用者检定。

应用	Ab评论	说明
Flow Cyt (Intra)		1/250. <b>ab172730</b> - Rabbit monoclonal IgG, is suitable for use as an isotype control with this antibody.
WB		1/1000 - 1/10000. Predicted molecular weight: 32 kDa.
IHC-P		1/100 - 1/250. Perform heat mediated antigen retrieval with citrate buffer pH 6 before commencing with IHC staining protocol.

应用说明                                  Is unsuitable for IP.

## 靶标

**功能**    Involved in autophagic vesicle formation. Conjugation with ATG12, through a ubiquitin-like conjugating system involving ATG7 as an E1-like activating enzyme and ATG10 as an E2-like conjugating enzyme, is essential for its function. The ATG12-ATG5 conjugate acts as an E3-like enzyme which is required for lipidation of ATG8 family proteins and their association to the vesicle membranes. Involved in mitochondrial quality control after oxidative damage, and in subsequent cellular longevity. The ATG12-ATG5 conjugate also negatively regulates the innate antiviral immune response by blocking the type I IFN production pathway through direct association with RARRES3 and MAVS. Also plays a role in translation or delivery of incoming viral RNA to the translation apparatus. Plays a critical role in multiple aspects of lymphocyte development and is essential for both B and T lymphocyte survival and proliferation. Required for optimal processing and presentation of antigens for MHC II. Involved in the maintenance of axon morphology and membrane structures, as well as in normal adipocyte differentiation. Promotes primary ciliogenesis through removal of OFD1 from centriolar satellites and degradation of IFT20 via the autophagic pathway.

May play an important role in the apoptotic process, possibly within the modified cytoskeleton. Its expression is a relatively late event in the apoptotic process, occurring downstream of caspase activity. Plays a crucial role in IFN-gamma-induced autophagic cell death by interacting with FADD.

**组织特异性**                                    Ubiquitous. The mRNA is present at similar levels in viable and apoptotic cells, whereas the protein is dramatically highly expressed in apoptotic cells.

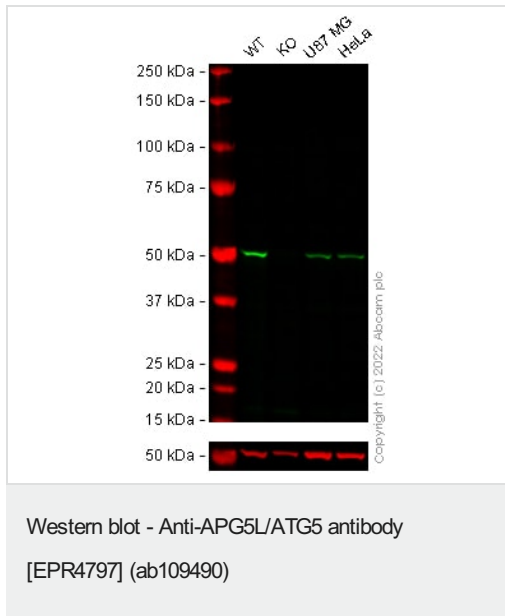
**序列相似性**                                    Belongs to the ATG5 family.

**翻译后修饰**                                    Conjugated to ATG12; which is essential for autophagy, but is not required for association with isolation membrane.  
Acetylated by EP300.

**细胞定位**                                      Cytoplasm. Preautophagosomal structure membrane. Colocalizes with nonmuscle actin. The

conjugate detaches from the membrane immediately before or after autophagosome formation is completed (By similarity). Localizes also to discrete punctae along the ciliary axoneme and to the base of the ciliary axoneme.

## 图片



**All lanes :** Anti-APG5L/ATG5 antibody [EPR4797] (ab109490) at 1/1000 dilution

**Lane 1 :** Wild-type THP-1 cell lysate

**Lane 2 :** ATG5 knockout THP-1 cell lysate

**Lane 3 :** U-87 MG cell lysate

**Lane 4 :** HeLa cell lysate

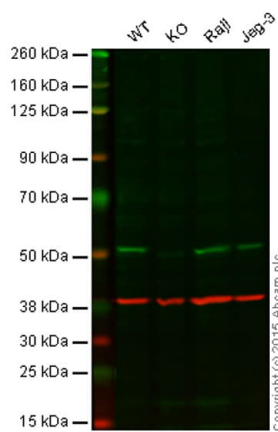
Lysates/proteins at 20 µg per lane.

Performed under reducing conditions.

**Predicted band size:** 32 kDa

**Observed band size:** 50 kDa

False colour image of Western blot: Anti-APG5L/ATG5 antibody [EPR4797] staining at 1/1000 dilution, shown in green; Mouse anti-Alpha Tubulin [DM1A] ([ab7291](#)) loading control staining at 1/20000 dilution, shown in red. In Western blot, ab109490 was shown to bind specifically to APG5L/ATG5. A band was observed at 50 kDa in wild-type THP-1 cell lysates with no signal observed at this size in ATG5 knockout cell line [ab277835](#) (knockout cell lysate [ab290722](#)). To generate this image, wild-type and ATG5 knockout THP-1 cell lysates were analysed. First, samples were run on an SDS-PAGE gel then transferred onto a nitrocellulose membrane. Membranes were blocked in 5 % milk in TBS-0.1 % Tween<sup>®</sup> 20 (TBS-T) before incubation with primary antibodies overnight at 4 °C. Blots were washed four times in TBS-T, incubated with secondary antibodies for 1 h at room temperature, washed again four times then imaged. Secondary antibodies used were Goat anti-Rabbit IgG H&L 800CW and Goat anti-Mouse IgG H&L 680RD at 1/20000 dilution.



Western blot - Anti-APG5L/ATG5 antibody [EPR4797] (ab109490)

**Lane 1:** Wild-type HAP1 cell lysate (20 µg)

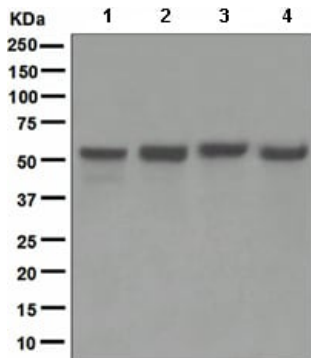
**Lane 2:** APG5L/ATG5 knockout HAP1 cell lysate (20 µg)

**Lane 3:** Raji cell lysate (20 µg)

**Lane 4:** Jeg-3 cell lysate (20 µg)

**Lanes 1 - 4:** Merged signal (red and green). Green - ab109490 observed at 52 kDa. Red - loading control, **ab8245**, observed at 37 kDa.

ab109490 was shown to specifically react with APG5L/ATG5 when APG5L/ATG5 knockout samples were used. Wild-type and APG5L/ATG5 knockout samples were subjected to SDS-PAGE. ab109490 and **ab8245** (loading control to GAPDH) were diluted 1/1000 and 1/2000 respectively and incubated overnight at 4°C. Blots were developed with Goat anti-Rabbit IgG H&L (IRDye® 800CW) preadsorbed (**ab216773**) and Goat anti-Mouse IgG H&L (IRDye® 680RD) preadsorbed (**ab216776**) secondary antibodies at 1/10 000 dilution for 1 h at room temperature before imaging.



Western blot - Anti-APG5L/ATG5 antibody [EPR4797] (ab109490)

**All lanes :** Anti-APG5L/ATG5 antibody [EPR4797] (ab109490) at 1/1000 dilution

**Lane 1 :** THP1 cell lysate

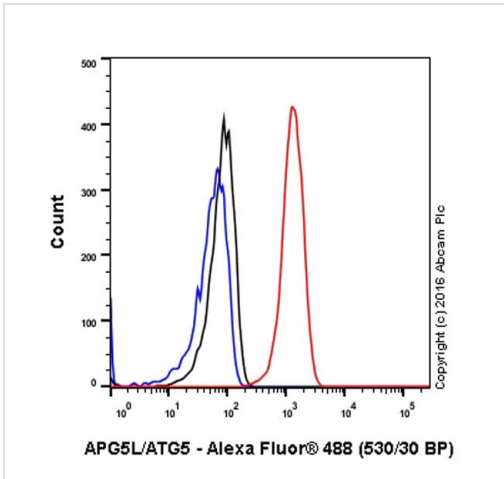
**Lane 2 :** Raji cell lysate

**Lane 3 :** HeLa cell lysate

**Lane 4 :** HT1080 cell lysate

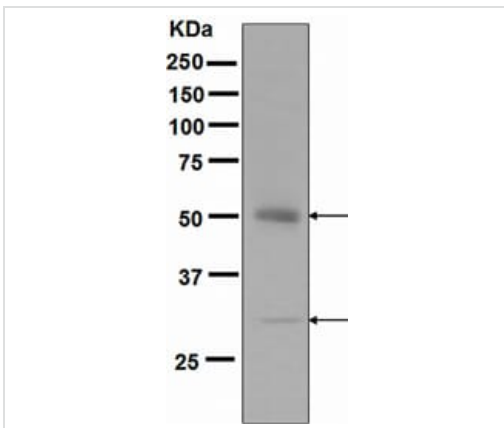
Lysates/proteins at 10 µg per lane.

**Predicted band size:** 32 kDa



Intracellular Flow Cytometry analysis of HeLa (human cervix adenocarcinoma) cells labeling APG5L/ATG5 with purified ab109490 at 1/250 dilution (10ug/mL) (red). Cells were fixed with 4% paraformaldehyde and permeabilised with 90% methanol. A Goat anti rabbit IgG (Alexa Fluor®488) (1/2000 dilution) was used as the secondary antibody. Rabbit monoclonal IgG (Black) was used as the isotype control, cells without incubation with primary antibody and secondary antibody (Blue) were used as the unlabeled control.

Flow Cytometry (Intracellular) - Anti-APG5L/ATG5 antibody [EPR4797] (ab109490)

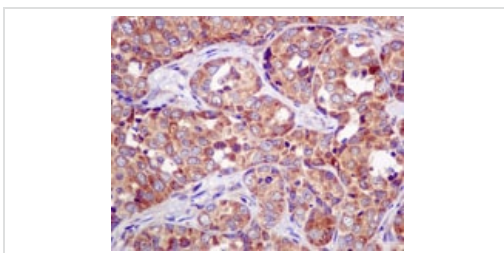


Anti-APG5L/ATG5 antibody [EPR4797] (ab109490) at 1/1000 dilution + Human fetal kidney lysate at 10 µg

**Predicted band size:** 32 kDa

Upper band shows APG5L/ATG5 conjugated to ATG12.

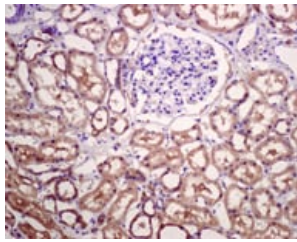
Western blot - Anti-APG5L/ATG5 antibody [EPR4797] (ab109490)



ab109490, at 1/100 dilution, staining APG5L/ATG5 in paraffin-embedded Human breast carcinoma by Immunohistochemistry.

Perform heat mediated antigen retrieval with citrate buffer pH 6 before commencing with IHC staining protocol.

Immunohistochemistry (Formalin/PFA-fixed paraffin-embedded sections) - Anti-APG5L/ATG5 antibody [EPR4797] (ab109490)



Immunohistochemistry (Formalin/PFA-fixed paraffin-embedded sections) - Anti-APG5L/ATG5 antibody [EPR4797] (ab109490)

ab109490, at 1/100 dilution, staining APG5L/ATG5 in paraffin-embedded Human kidney by Immunohistochemistry.

Perform heat mediated antigen retrieval with citrate buffer pH 6 before commencing with IHC staining protocol.

### Why choose a recombinant antibody?



**Research with confidence**  
Consistent and reproducible results



**Long-term and scalable supply**  
Recombinant technology



**Success from the first experiment**  
Confirmed specificity



**Ethical standards compliant**  
Animal-free production

Anti-APG5L/ATG5 antibody [EPR4797] (ab109490)

**Please note:** All products are "FOR RESEARCH USE ONLY. NOT FOR USE IN DIAGNOSTIC PROCEDURES"

### Our Abpromise to you: Quality guaranteed and expert technical support

- Replacement or refund for products not performing as stated on the datasheet
- Valid for 12 months from date of delivery
- Response to your inquiry within 24 hours
- We provide support in Chinese, English, French, German, Japanese and Spanish
- Extensive multi-media technical resources to help you
- We investigate all quality concerns to ensure our products perform to the highest standards

If the product does not perform as described on this datasheet, we will offer a refund or replacement. For full details of the Abpromise, please visit <https://www.abcam.cn/abpromise> or contact our technical team.

## Terms and conditions

---

- Guarantee only valid for products bought direct from Abcam or one of our authorized distributors