


# Anti-Apc5 antibody ab72516

[1 References](#) [2 图像](#)

### 概述

产品名称	Anti-Apc5抗体
描述	兔多克隆抗体to Apc5
宿主	Rabbit
经测试应用	适用于: WB, IP
种属反应性	与反应: Mouse, Human 预测可用于: Rabbit, Horse, Guinea pig, Dog, Chimpanzee, Rhesus monkey, Gorilla, Orangutan, Elephant 
免疫原	Synthetic peptide from a region between residue 705 and the C terminus (residue 755) of human Apc5 (NP_057321.2)
阳性对照	Whole cell lysate from Hela, 293T and NIH3T3 cells.
常规说明	<p>The Life Science industry has been in the grips of a reproducibility crisis for a number of years. Abcam is leading the way in addressing this with our range of recombinant monoclonal antibodies and knockout edited cell lines for gold-standard validation. Please check that this product meets your needs before purchasing.</p> <p>If you have any questions, special requirements or concerns, please send us an inquiry and/or contact our Support team ahead of purchase. Recommended alternatives for this product can be found below, along with publications, customer reviews and Q&amp;As</p>

### 性能

形式	Liquid
存放说明	Shipped at 4°C. Upon delivery aliquot and store at -20°C. Avoid freeze / thaw cycles.
存储溶液	pH: 7 Preservative: 0.09% Sodium azide Constituents: 1.815% Tris, 1.764% Sodium citrate, 0.021% PBS
纯度	Immunogen affinity purified
克隆	多克隆
同种型	IgG

### 应用

## The Abpromise guarantee

**Abpromise™** 承诺保证使用 ab72516 于以下的经测试应用

“应用说明”部分 下显示的仅为推荐的起始稀释度;实际最佳的稀释度/浓度应由使用者检定。

应用	Ab评论	说明
WB		1/500 - 1/2500. Detects a band of approximately 85 kDa (predicted molecular weight: 85 kDa).
IP		Use at 2-5 µg/mg of lysate.

## 靶标

### 功能

Component of the anaphase promoting complex/cyclosome (APC/C), a cell cycle-regulated E3 ubiquitin ligase that controls progression through mitosis and the G1 phase of the cell cycle. The APC/C complex acts by mediating ubiquitination and subsequent degradation of target proteins: it mainly mediates the formation of 'Lys-11'-linked polyubiquitin chains and, to a lower extent, the formation of 'Lys-48'- and 'Lys-63'-linked polyubiquitin chains.

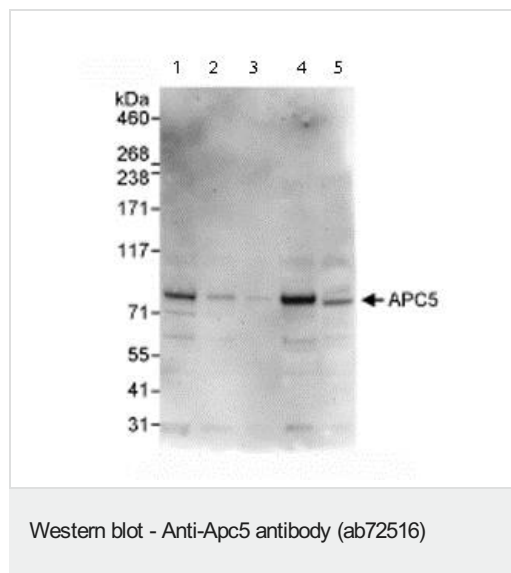
### 通路

Protein modification; protein ubiquitination.

### 序列相似性

Belongs to the APC5 family.  
Contains 4 TPR repeats.

## 图片



**All lanes :** Anti-Apc5 antibody (ab72516) at 0.4 µg/ml

**Lane 1 :** Whole cell lysate from HeLa cells at 50 µg

**Lane 2 :** Whole cell lysate from HeLa cells at 15 µg

**Lane 3 :** Whole cell lysate from HeLa cells at 5 µg

**Lane 4 :** Whole cell lysate from 293T cells at 50 µg

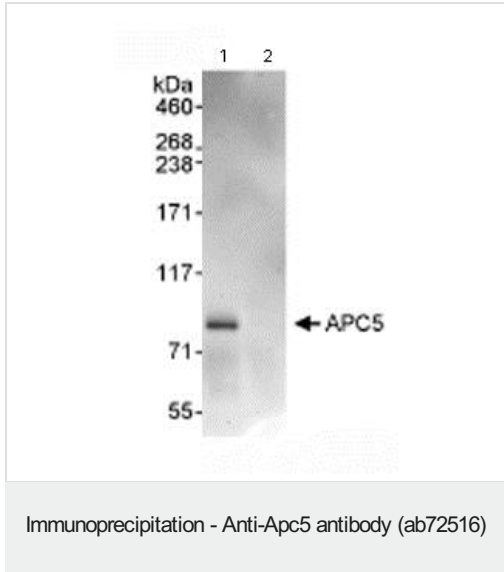
**Lane 5 :** Whole cell lysate from NIH3T3 cells at 50 µg

Developed using the ECL technique.

**Predicted band size:** 85 kDa

**Observed band size:** 85 kDa

**Exposure time:** 3 minutes



Immunoprecipitation/ Western Blot of Apc5.

Lane 1: ab72516 at 3 $\mu$ g/mg HeLa whole cell lysate (1mg for IP, 20% of IP loaded).

Lane 2: Control IgG.

ab72516 at 1 $\mu$ g/ml for WB.

Chemiluminescence with an exposure time of 1 minute.

**Please note:** All products are "FOR RESEARCH USE ONLY. NOT FOR USE IN DIAGNOSTIC PROCEDURES"

### Our Abpromise to you: Quality guaranteed and expert technical support

---

- Replacement or refund for products not performing as stated on the datasheet
- Valid for 12 months from date of delivery
- Response to your inquiry within 24 hours
- We provide support in Chinese, English, French, German, Japanese and Spanish
- Extensive multi-media technical resources to help you
- We investigate all quality concerns to ensure our products perform to the highest standards

If the product does not perform as described on this datasheet, we will offer a refund or replacement. For full details of the Abpromise, please visit <https://www.abcam.cn/abpromise> or contact our technical team.

### Terms and conditions

---

- Guarantee only valid for products bought direct from Abcam or one of our authorized distributors