


Anti-APC2 antibody ab113370

★★★★★ [1 Abreviews](#) [3 References](#) [3 图像](#)

概述

产品名称	Anti-APC2抗体
描述	兔多克隆抗体to APC2
宿主	Rabbit
经测试应用	适用于: WB, IHC-P
种属反应性	与反应: Human 预测可用于: Mouse 
免疫原	Synthetic peptide corresponding to Human APC2 (internal sequence) conjugated to keyhole limpet haemocyanin. Database link: O95996
阳性对照	Human Brain Cortex and Small Intestine tissues; HeLa cell lysate.
常规说明	<p>The Life Science industry has been in the grips of a reproducibility crisis for a number of years. Abcam is leading the way in addressing this with our range of recombinant monoclonal antibodies and knockout edited cell lines for gold-standard validation. Please check that this product meets your needs before purchasing.</p> <p>If you have any questions, special requirements or concerns, please send us an inquiry and/or contact our Support team ahead of purchase. Recommended alternatives for this product can be found below, along with publications, customer reviews and Q&As</p>

性能

形式	Liquid
存放说明	Shipped at 4°C. Store at +4°C short term (1-2 weeks). Store at -20°C or -80°C. Avoid freeze / thaw cycle.
存储溶液	pH: 7.4 Preservative: 0.02% Sodium azide Constituent: 99% PBS
纯度	Protein A purified
克隆	多克隆
同种型	IgG

应用

The Abpromise guarantee

Abpromise™ 承诺保证使用 ab113370 于以下的经测试应用

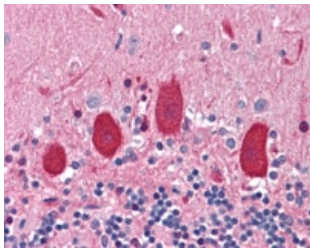
“应用说明”部分 下显示的仅为推荐的起始稀释度;实际最佳的稀释度/浓度应由使用者检定。

应用	Ab评论	说明
WB		Use a concentration of 1 - 2 µg/ml. Predicted molecular weight: 244 kDa.
IHC-P	★★★★★ (1)	Use a concentration of 5 µg/ml.

靶标

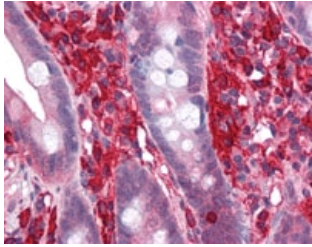
功能	Promotes rapid degradation of CTNNB1 and may function as a tumor suppressor. May function in Wnt signaling.
组织特异性	Widely expressed (at protein level). Specifically expressed in the CNS.
序列相似性	Belongs to the adenomatous polyposis coli (APC) family. Contains 6 ARM repeats.
发展阶段	Expressed in fetal brain.
细胞定位	Cytoplasm, cytoskeleton. Golgi apparatus. Cytoplasm. Cytoplasm, perinuclear region. Associated with actin filaments (PubMed:11691822). Associated with microtubule network (PubMed:10644998, PubMed:11691822).

图片



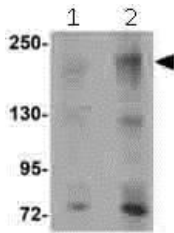
ab113370, at 5 µg/ml, staining APC2 in Formalin-fixed, Paraffin-embedded Human Brain cortex tissue by Immunohistochemistry.

Immunohistochemistry (Formalin/PFA-fixed paraffin-embedded sections) - Anti-APC2 antibody (ab113370)



Immunohistochemistry (Formalin/PFA-fixed paraffin-embedded sections) - Anti-APC2 antibody (ab113370)

ab113370, at 5 µg/ml, staining APC2 in Formalin-fixed, Paraffin-embedded Human Small intestine tissue by Immunohistochemistry.



Western blot - Anti-APC2 antibody (ab113370)

Lane 1 : Anti-APC2 antibody (ab113370) at 1 µg/ml

Lane 2 : Anti-APC2 antibody (ab113370) at 2 µg/ml

All lanes : HeLa cell lysate

Predicted band size: 244 kDa

Please note: All products are "FOR RESEARCH USE ONLY. NOT FOR USE IN DIAGNOSTIC PROCEDURES"

Our Abpromise to you: Quality guaranteed and expert technical support

- Replacement or refund for products not performing as stated on the datasheet
- Valid for 12 months from date of delivery
- Response to your inquiry within 24 hours
- We provide support in Chinese, English, French, German, Japanese and Spanish
- Extensive multi-media technical resources to help you
- We investigate all quality concerns to ensure our products perform to the highest standards

If the product does not perform as described on this datasheet, we will offer a refund or replacement. For full details of the Abpromise, please visit <https://www.abcam.cn/abpromise> or contact our technical team.

Terms and conditions

- Guarantee only valid for products bought direct from Abcam or one of our authorized distributors