

Anti-APC2 antibody ab106600

3 图像

概述

产品名称	Anti-APC2抗体
描述	兔多克隆抗体to APC2
宿主	Rabbit
特异性	ab106600 is predicted to not cross-react with other Apc family members. At least four isoforms of Apc2 are known to exist.
经测试应用	适用于: ICC/IF, WB, ICC
种属反应性	与反应: Human
免疫原	Synthetic peptide corresponding to Human APC2 (internal sequence). Database link: O95996
阳性对照	HeLa cells and cell lysate
常规说明	<p>The Life Science industry has been in the grips of a reproducibility crisis for a number of years. Abcam is leading the way in addressing this with our range of recombinant monoclonal antibodies and knockout edited cell lines for gold-standard validation. Please check that this product meets your needs before purchasing.</p> <p>If you have any questions, special requirements or concerns, please send us an inquiry and/or contact our Support team ahead of purchase. Recommended alternatives for this product can be found below, along with publications, customer reviews and Q&As</p>

性能

形式	Liquid
存放说明	Shipped at 4°C. Store at 4°C (stable for up to 12 months).
存储溶液	pH: 7.2 Preservative: 0.02% Sodium azide Constituent: PBS
纯度	Immunogen affinity purified
克隆	多克隆
同种型	IgG

应用

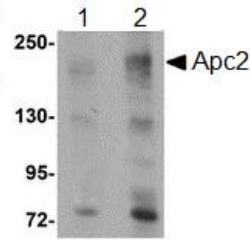
The Abpromise guarantee **Abpromise™**承诺保证使用ab106600于以下的经测试应用

“应用说明”部分 下显示的仅为推荐的起始稀释度;实际最佳的稀释度/浓度应由使用者检定。

应用	Ab评论	说明
ICC/IF		Use a concentration of 20 µg/ml.
WB		Use a concentration of 1 - 2 µg/ml. Predicted molecular weight: 244 kDa.
ICC		Use a concentration of 5 µg/ml.

靶标	
功能	Promotes rapid degradation of CTNNB1 and may function as a tumor suppressor. May function in Wnt signaling.
组织特异性	Widely expressed (at protein level). Specifically expressed in the CNS.
序列相似性	Belongs to the adenomatous polyposis coli (APC) family. Contains 6 ARM repeats.
发展阶段	Expressed in fetal brain.
细胞定位	Cytoplasm, cytoskeleton. Golgi apparatus. Cytoplasm. Cytoplasm, perinuclear region. Associated with actin filaments (PubMed:11691822). Associated with microtubule network (PubMed:10644998, PubMed:11691822).

图片



Lane 1 : Anti-APC2 antibody (ab106600) at 1 µg/ml

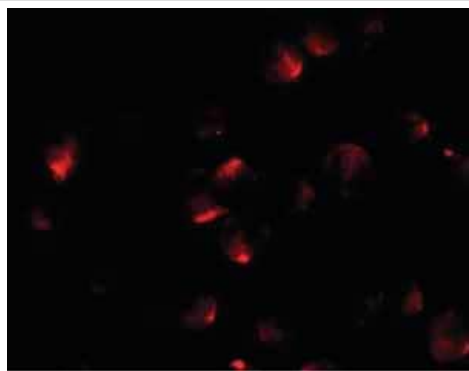
Lane 2 : Anti-APC2 antibody (ab106600) at 2 µg/ml

All lanes : HeLa cell lysate

Lysates/proteins at 15 µg per lane.

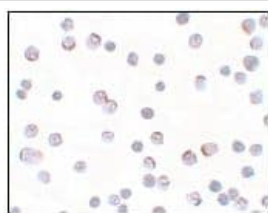
Predicted band size: 244 kDa

Western blot - Anti-APC2 antibody (ab106600)



Immunofluorescence of APC2 in HeLa cells with ab106600 at 20 ug/mL.

Immunocytochemistry/ Immunofluorescence - Anti-APC2 antibody (ab106600)



Immunocytochemical analysis of ab106600 at 5 ug/ml in HeLa cells.

Immunocytochemistry - Anti-APC2 antibody (ab106600)

Please note: All products are "FOR RESEARCH USE ONLY. NOT FOR USE IN DIAGNOSTIC PROCEDURES"

Our Abpromise to you: Quality guaranteed and expert technical support

- Replacement or refund for products not performing as stated on the datasheet
- Valid for 12 months from date of delivery
- Response to your inquiry within 24 hours
- We provide support in Chinese, English, French, German, Japanese and Spanish
- Extensive multi-media technical resources to help you
- We investigate all quality concerns to ensure our products perform to the highest standards

If the product does not perform as described on this datasheet, we will offer a refund or replacement. For full details of the Abpromise, please visit <https://www.abcam.cn/abpromise> or contact our technical team.

Terms and conditions

- Guarantee only valid for products bought direct from Abcam or one of our authorized distributors