

### APC Anti-Ly6c antibody [HK1.4] ab93550

[3 References](#) [1 图像](#)

#### 概述

产品名称	APC Anti-Ly6c抗体[HK1.4]
描述	APC大鼠单克隆抗体[HK1.4] to Ly6c
宿主	Rat
偶联物	APC. Ex: 645nm, Em: 660nm
经测试应用	适用于: Flow Cyt
种属反应性	与反应: Mouse
免疫原	The details of the immunogen for this antibody are not available.
阳性对照	BALB/c splenocytes
常规说明	<p><i>In vitro addition of clone HK1.4 monoclonal antibody can increase proliferation and stimulate cytokine release.</i></p> <p>The Life Science industry has been in the grips of a reproducibility crisis for a number of years. Abcam is leading the way in addressing this with our range of recombinant monoclonal antibodies and knockout edited cell lines for gold-standard validation. Please check that this product meets your needs before purchasing.</p> <p>If you have any questions, special requirements or concerns, please send us an inquiry and/or contact our Support team ahead of purchase. Recommended alternatives for this product can be found below, along with publications, customer reviews and Q&amp;As</p>

#### 性能

形式	Liquid
存放说明	Shipped at 4°C. Store at +4°C.
存储溶液	pH: 7.2 Preservative: 0.09% Sodium azide
纯度	Aqueous buffer Protein G purified
Primary antibody说明	<i>In vitro addition of clone HK1.4 monoclonal antibody can increase proliferation and stimulate cytokine release.</i>

克隆 单克隆  
 克隆编号 HK1.4  
 同种型 IgG2c

## 应用

**The Abpromise guarantee** **Abpromise™**承诺保证使用ab93550于以下的经测试应用

“应用说明”部分下显示的仅为推荐的起始稀释度;实际最佳的稀释度/浓度应由使用者检定。

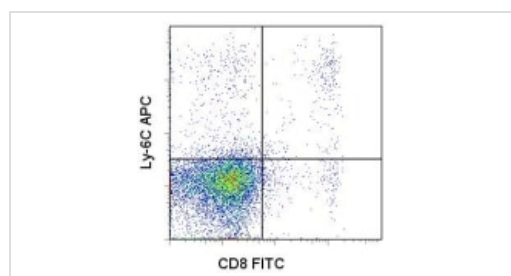
应用	Ab评论	说明
Flow Cyt		Use 0.125µg for 10 <sup>5-8</sup> cells. 0.125µg for 10 <sup>5</sup> to 10 <sup>8</sup> cells in a final volume of 100 µl.

## 靶标

**相关性** Ly6C is a monocyte/macrophage and endothelial cell differentiation antigen regulated by interferon gamma, and may play a role in the development and maturation of lymphocytes. It is a member of the Ly6 multigene family of type V glycoposphatidylinositol anchored cell surface proteins. It is expressed on bone marrow cells, monocytes/macrophages, neutrophils, endothelial cells, and T cell subsets. Mice with the Ly6.2 allotype (e.g., AKR, C57BL, C57BR, C57L, DBA/2, PL, SJL, SWR, 129) have subsets of CD4+Ly6C+ and CD8+Ly6C+ cells, while Ly6.1 strains (e.g., A, BALB/c, CBA, C3H/He, DBA/1, NZB) have only CD8+Ly6C+ lymphocytes.

**细胞定位** Cell membrane; Lipid-anchor, GPI-anchor.

## 图片



Staining of BALB/c splenocytes with FITC anti-mouse CD8 and 0.06 µg of ab93550. Total viable cells were used for analysis.

Flow Cytometry - APC Anti-Ly6c antibody [HK1.4] (ab93550)

**Please note:** All products are "FOR RESEARCH USE ONLY. NOT FOR USE IN DIAGNOSTIC PROCEDURES"

## **Our Abpromise to you: Quality guaranteed and expert technical support**

---

- Replacement or refund for products not performing as stated on the datasheet
- Valid for 12 months from date of delivery
- Response to your inquiry within 24 hours
  
- We provide support in Chinese, English, French, German, Japanese and Spanish
- Extensive multi-media technical resources to help you
- We investigate all quality concerns to ensure our products perform to the highest standards

If the product does not perform as described on this datasheet, we will offer a refund or replacement. For full details of the Abpromise, please visit <https://www.abcam.cn/abpromise> or contact our technical team.

## **Terms and conditions**

---

- Guarantee only valid for products bought direct from Abcam or one of our authorized distributors