

### APC Anti-CD62L antibody [MEL-14] ab41459

★★★★★ [1 Abreviews](#) [4 References](#) [1 图像](#)

#### 概述

产品名称	APC Anti-CD62L抗体[MEL-14]
描述	APC大鼠单克隆抗体[MEL-14] to CD62L
宿主	Rat
偶联物	APC. Ex: 645nm, Em: 660nm
经测试应用	<b>适用于:</b> Flow Cyt
种属反应性	<b>与反应:</b> Mouse
免疫原	Tissue, cells or virus corresponding to Mouse CD62L.
阳性对照	Flow cyt: C57Bl/6 splenocytes.
常规说明	<p>The monoclonal antibody MEL-14 blocks in vitro binding of lymphocytes to peripheral lymph node HEV and inhibits in vivo lymphocyte extravasation into peripheral lymph nodes and the late stages of leukocyte rolling.</p> <p>The Life Science industry has been in the grips of a reproducibility crisis for a number of years. Abcam is leading the way in addressing this with our range of recombinant monoclonal antibodies and knockout edited cell lines for gold-standard validation. Please check that this product meets your needs before purchasing.</p> <p>If you have any questions, special requirements or concerns, please send us an inquiry and/or contact our Support team ahead of purchase. Recommended alternatives for this product can be found below, along with publications, customer reviews and Q&amp;As</p>

#### 性能

形式	Liquid
存放说明	Shipped at 4°C. Store at +4°C.
存储溶液	<p>pH: 7.20</p> <p>Preservative: 0.09% Sodium azide</p> <p>Constituents: 0.14% Monobasic dihydrogen sodium phosphate, 0.87% Sodium chloride, 0.1% Gelatin</p> <p>Also contains stabilising agent.</p>
纯度	Affinity purified

Primary antibody说明	The monoclonal antibody MEL-14 blocks in vitro binding of lymphocytes to peripheral lymph node HEV and inhibits in vivo lymphocyte extravasation into peripheral lymph nodes and the late stages of leukocyte rolling.
克隆	单克隆
克隆编号	MEL-14
同种型	IgG2a
轻链类型	kappa

应用

The Abpromise guarantee

Abpromise™承诺保证使用ab41459于以下的经测试应用

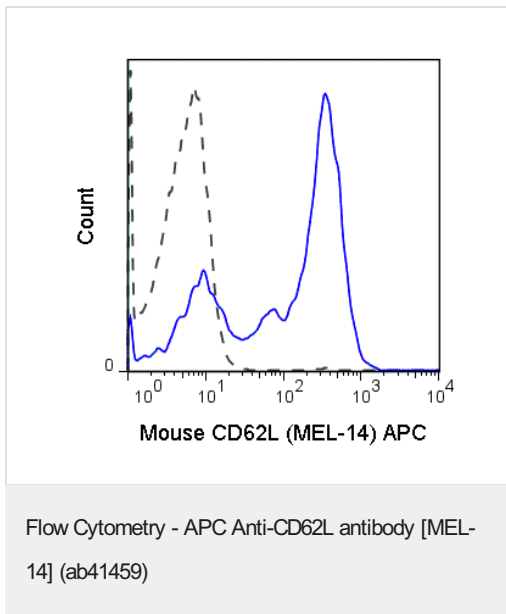
“应用说明”部分 下显示的仅为推荐的起始稀释度;实际最佳的稀释度/浓度应由使用者检定。

应用	Ab评论	说明
Flow Cyt	★★★★★ (1)	Use at an assay dependent concentration.

靶标

功能	Cell surface adhesion protein. Mediates the adherence of lymphocytes to endothelial cells of high endothelial venules in peripheral lymph nodes. Promotes initial tethering and rolling of leukocytes in endothelia.
组织特异性	Expressed in B cell lines and T lymphocytes.
序列相似性	Belongs to the selectin/LECAM family. Contains 1 C-type lectin domain. Contains 1 EGF-like domain. Contains 2 Sushi (CCP/SCR) domains.
细胞定位	Membrane.

图片



Flow Cytometry of C57Bl/6 splenocytes labeling CD62L with ab41459 at 0.06µg (solid line), or Rat IgG2a isotype control at 0.06µg (dashed line).

**Please note:** All products are "FOR RESEARCH USE ONLY. NOT FOR USE IN DIAGNOSTIC PROCEDURES"

### Our Abpromise to you: Quality guaranteed and expert technical support

- Replacement or refund for products not performing as stated on the datasheet
- Valid for 12 months from date of delivery
- Response to your inquiry within 24 hours
- We provide support in Chinese, English, French, German, Japanese and Spanish
- Extensive multi-media technical resources to help you
- We investigate all quality concerns to ensure our products perform to the highest standards

If the product does not perform as described on this datasheet, we will offer a refund or replacement. For full details of the Abpromise, please visit <https://www.abcam.cn/abpromise> or contact our technical team.

### Terms and conditions

- Guarantee only valid for products bought direct from Abcam or one of our authorized distributors