

APC Anti-CD38 antibody [90] ab25041

1 图像

概述

产品名称	APC Anti-CD38抗体[90]
描述	APC大鼠单克隆抗体[90] to CD38
宿主	Rat
偶联物	APC. Ex: 645nm, Em: 660nm
经测试应用	适用于: Flow Cyt
种属反应性	与反应: Mouse
免疫原	Tissue, cells or virus corresponding to CD38. Mouse bone marrow pre-B cells
常规说明	<p>The Life Science industry has been in the grips of a reproducibility crisis for a number of years. Abcam is leading the way in addressing this with our range of recombinant monoclonal antibodies and knockout edited cell lines for gold-standard validation. Please check that this product meets your needs before purchasing.</p> <p>If you have any questions, special requirements or concerns, please send us an inquiry and/or contact our Support team ahead of purchase. Recommended alternatives for this product can be found below, along with publications, customer reviews and Q&As</p>

性能

形式	Liquid
存放说明	Shipped at 4°C. Store at +4°C. Store In the Dark.
存储溶液	<p>pH: 7.3</p> <p>Preservative: 0.09% Sodium azide</p> <p>Constituents: PBS, 16% Sucrose</p> <p>Stabilising agent.</p>
纯度	Affinity purified
克隆	单克隆
克隆编号	90
同种型	IgG2a
轻链类型	kappa

应用

The Abpromise guarantee Abpromise™承诺保证使用ab25041于以下的经测试应用

“应用说明”部分 下显示的仅为推荐的起始稀释度;实际最佳的稀释度/浓度应由使用者检定。

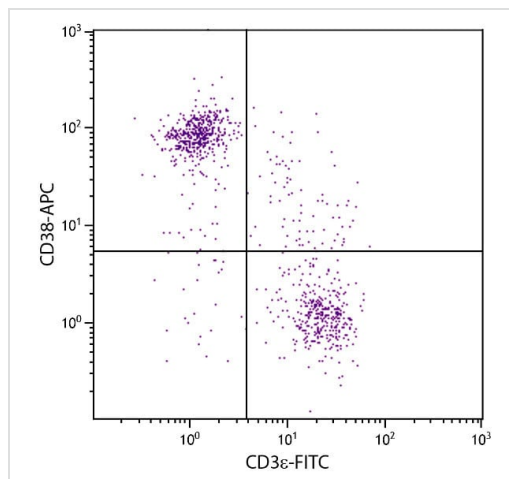
应用	Ab评论	说明
Flow Cyt		

应用说明	Cellular activation[Induction of B lymphocyte proliferation]: Use at an assay dependent dilution. Flow Cyt: Use 0.2µg for 10 ⁶ cells. IHC-Fr: Use at an assay dependent dilution. IP: Use at an assay dependent dilution. Not yet tested in other applications. Optimal dilutions/concentrations should be determined by the end user.
------	--

靶标

功能	Synthesizes cyclic ADP-ribose, a second messenger for glucose-induced insulin secretion. Also has cADPr hydrolase activity. Also moonlights as a receptor in cells of the immune system.
组织特异性	Expressed at high levels in pancreas, liver, kidney, brain, testis, ovary, placenta, malignant lymphoma and neuroblastoma.
序列相似性	Belongs to the ADP-ribosyl cyclase family.
发展阶段	Preferentially expressed at both early and late stages of the B and T-cell maturation. It is also detected on erythroid and myeloid progenitors in bone marrow, where the level of surface expression was shown to decrease during differentiation of blast-forming unit E to colony-forming unit E.
细胞定位	Membrane.
形式	There are 2 isoforms produced by alternative splicing.

图片



Flow Cytometry - APC Anti-CD38 antibody [90]
(ab25041)

Flow Cytometry analysis of BALB/c mouse splenocytes stained with Anti-CD38 antibody [90] (Allophycocyanin) (ab25041) (0.1 $\mu\text{g}/10^6\text{cells}$) and Anti-CD3 antibody [C363.29B] (FITC) (**ab24948**).

Please note: All products are "FOR RESEARCH USE ONLY. NOT FOR USE IN DIAGNOSTIC PROCEDURES"

Our Abpromise to you: Quality guaranteed and expert technical support

- Replacement or refund for products not performing as stated on the datasheet
- Valid for 12 months from date of delivery
- Response to your inquiry within 24 hours
- We provide support in Chinese, English, French, German, Japanese and Spanish
- Extensive multi-media technical resources to help you
- We investigate all quality concerns to ensure our products perform to the highest standards

If the product does not perform as described on this datasheet, we will offer a refund or replacement. For full details of the Abpromise, please visit <https://www.abcam.cn/abpromise> or contact our technical team.

Terms and conditions

- Guarantee only valid for products bought direct from Abcam or one of our authorized distributors