

### APC Anti-CD15 antibody [MCS-1] ab91151

#### 1 图像

#### 概述

产品名称	APC Anti-CD15抗体[MCS-1]
描述	APC小鼠单克隆抗体[MCS-1] to CD15
宿主	Mouse
偶联物	APC. Ex: 645nm, Em: 660nm
特异性	ab91151 recognizes the carbohydrate structure 3-fucosyl-N-acetyl-lactosamine. It reacts with the promyelocytes, myelocytes and polymorphonuclear cells. It specifically labels neutrophils, eosinophils and monoblastoid precursor cells of the myeloid lineage. ab91151 does not react with platelets and cells of the T and B lymphocyte lineage.
经测试应用	适用于: Flow Cyt
种属反应性	与反应: Human
免疫原	Human granulocytes
阳性对照	Normal peripheral blood from a Human donor.
常规说明	<p>The Life Science industry has been in the grips of a reproducibility crisis for a number of years. Abcam is leading the way in addressing this with our range of recombinant monoclonal antibodies and knockout edited cell lines for gold-standard validation. Please check that this product meets your needs before purchasing.</p> <p>If you have any questions, special requirements or concerns, please send us an inquiry and/or contact our Support team ahead of purchase. Recommended alternatives for this product can be found below, along with publications, customer reviews and Q&amp;As</p>

#### 性能

形式	Liquid
存放说明	Shipped at 4°C. Store at +4°C.
存储溶液	<p>pH: 7.20</p> <p>Preservative: 0.09% Sodium azide</p> <p>Constituent: 1% BSA</p>
纯度	Immunogen affinity purified
克隆	单克隆
克隆编号	MCS-1

应用

The Abpromise guarantee

Abpromise™承诺保证使用ab91151于以下的经测试应用

“应用说明”部分 下显示的仅为推荐的起始稀释度;实际最佳的稀释度/浓度应由使用者检定。

应用	Ab评论	说明
Flow Cyt		

应用说明

Flow Cyt: Use 20 µl for 10<sup>6</sup> cells.

Not yet tested in other applications.

Optimal dilutions/concentrations should be determined by the end user.

靶标

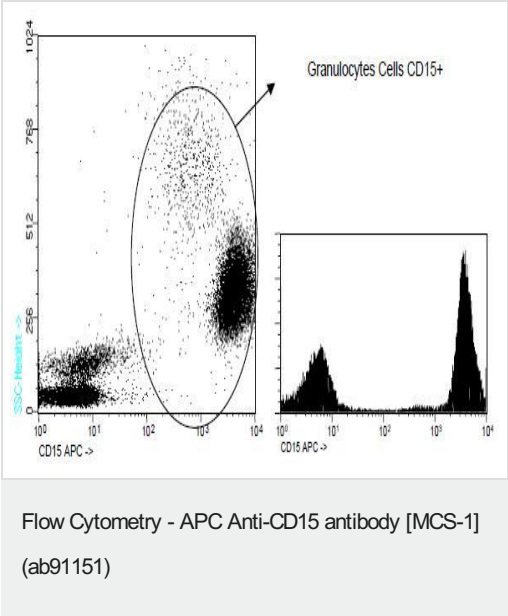
相关性

CD15 is a carbohydrate adhesion molecule (and not a protein) that mediates phagocytosis and chemotaxis. Synthesis is directed by FUT4 in lymphoid cells and mature granulocytes, and by FUT9 in promyelocytes and monocytes.

细胞定位

Golgi Apparatus; Membrane-bound form in trans cisternae of Golgi.

图片



Analysis of normal peripheral blood from a Human donor by Flow Cytometry, using ab91151 at 20 µl for 10<sup>6</sup> cells.

**Please note:** All products are "FOR RESEARCH USE ONLY. NOT FOR USE IN DIAGNOSTIC PROCEDURES"

Our Abpromise to you: Quality guaranteed and expert technical support

- Replacement or refund for products not performing as stated on the datasheet
- Valid for 12 months from date of delivery
- Response to your inquiry within 24 hours
- We provide support in Chinese, English, French, German, Japanese and Spanish
- Extensive multi-media technical resources to help you
- We investigate all quality concerns to ensure our products perform to the highest standards

If the product does not perform as described on this datasheet, we will offer a refund or replacement. For full details of the Abpromise, please visit <https://www.abcam.cn/abpromise> or contact our technical team.

#### **Terms and conditions**

---

- Guarantee only valid for products bought direct from Abcam or one of our authorized distributors