

APC Anti-CD11b antibody [M1/70] ab25482

[9 References](#) [1 图像](#)

概述

产品名称	APC Anti-CD11b抗体[M1/70]
描述	APC大鼠单克隆抗体[M1/70] to CD11b
宿主	Rat
偶联物	APC. Ex: 645nm, Em: 660nm
经测试应用	适用于: Flow Cyt
种属反应性	与反应: Mouse
免疫原	C57BL/10 mouse splenic T cells and concanavaline A-activated C57BL/10 splenocytes
常规说明	Protect the product from prolonged exposure to light. The Life Science industry has been in the grips of a reproducibility crisis for a number of years. Abcam is leading the way in addressing this with our range of recombinant monoclonal antibodies and knockout edited cell lines for gold-standard validation. Please check that this product meets your needs before purchasing. If you have any questions, special requirements or concerns, please send us an inquiry and/or contact our Support team ahead of purchase. Recommended alternatives for this product can be found below, along with publications, customer reviews and Q&As

性能

形式	Liquid
存放说明	Shipped at 4°C. Store at +4°C. Do Not Freeze. Please see notes section. Store undiluted.
存储溶液	pH: 7.20 Preservative: 0.09% Sodium azide Constituents: 0.1% Gelatin, 0.87% Sodium chloride, 0.142% Monobasic dihydrogen sodium phosphate
纯度	Affinity purified
克隆	单克隆
克隆编号	M1/70
同种型	IgG2b
轻链类型	kappa

应用

The Abpromise guarantee **Abpromise™**承诺保证使用ab25482于以下的经测试应用

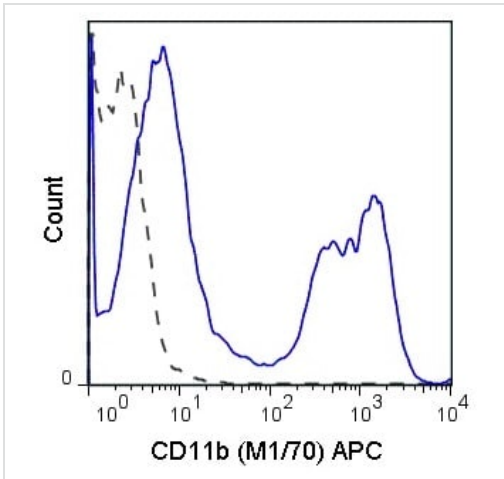
“应用说明”部分 下显示的仅为推荐的起始稀释度;实际最佳的稀释度/浓度应由使用者检定。

应用	Ab评论	说明
Flow Cyt		Use at an assay dependent concentration.

靶标

功能	Integrin alpha-M/beta-2 is implicated in various adhesive interactions of monocytes, macrophages and granulocytes as well as in mediating the uptake of complement-coated particles. It is identical with CR-3, the receptor for the iC3b fragment of the third complement component. It probably recognizes the R-G-D peptide in C3b. Integrin alpha-M/beta-2 is also a receptor for fibrinogen, factor X and ICAM1. It recognizes P1 and P2 peptides of fibrinogen gamma chain.
组织特异性	Predominantly expressed in monocytes and granulocytes.
疾病相关	Genetic variations in ITGAM has been associated with susceptibility to systemic lupus erythematosus type 6 (SLEB6) [MIM:609939]. Systemic lupus erythematosus (SLE) is a chronic, inflammatory and often febrile multisystemic disorder of connective tissue. It affects principally the skin, joints, kidneys and serosal membranes. It is thought to represent a failure of the regulatory mechanisms of the autoimmune system.
序列相似性	Belongs to the integrin alpha chain family. Contains 7 FG-GAP repeats. Contains 1 VWFA domain.
结构域	The integrin I-domain (insert) is a VWFA domain. Integrins with I-domains do not undergo protease cleavage.
细胞定位	Membrane.

图片



C57Bl/6 bone marrow cells were stained with 0.125µg anti-CD11b (ab25482) (solid line) or 0.125µg APC Rat IgG2b isotype control (dashed line).

Flow Cytometry - APC Anti-CD11b antibody [M1/70] (ab25482)

Please note: All products are "FOR RESEARCH USE ONLY. NOT FOR USE IN DIAGNOSTIC PROCEDURES"

Our Abpromise to you: Quality guaranteed and expert technical support

- Replacement or refund for products not performing as stated on the datasheet
- Valid for 12 months from date of delivery
- Response to your inquiry within 24 hours
- We provide support in Chinese, English, French, German, Japanese and Spanish
- Extensive multi-media technical resources to help you
- We investigate all quality concerns to ensure our products perform to the highest standards

If the product does not perform as described on this datasheet, we will offer a refund or replacement. For full details of the Abpromise, please visit <https://www.abcam.cn/abpromise> or contact our technical team.

Terms and conditions

- Guarantee only valid for products bought direct from Abcam or one of our authorized distributors