

# Anti-AP3 antibody ab85075

## 1 图像

### 概述

---

产品名称	Anti-AP3抗体
描述	兔多克隆抗体to AP3
宿主	Rabbit
经测试应用	适用于: WB
种属反应性	与反应: Human
免疫原	A 15 amino acid peptide from near the C terminal residues of Human AP3, swissprot O14617
阳性对照	HeLa cell lysate.
常规说明	<p>The Life Science industry has been in the grips of a reproducibility crisis for a number of years. Abcam is leading the way in addressing this with our range of recombinant monoclonal antibodies and knockout edited cell lines for gold-standard validation. Please check that this product meets your needs before purchasing.</p> <p>If you have any questions, special requirements or concerns, please send us an inquiry and/or contact our Support team ahead of purchase. Recommended alternatives for this product can be found below, along with publications, customer reviews and Q&amp;As</p>

### 性能

---

形式	Lyophilized:Reconstitute with 200ul distilled sterile water. Please note that if you receive this product in liquid form it has already been reconstituted as described and no further reconstitution is necessary.
存放说明	Shipped at 4°C. Store at +4°C.
存储溶液	Preservative: 0.02% Sodium azide
纯度	Protein A purified
克隆	多克隆
同种型	IgG

### 应用

---

**The Abpromise guarantee**      **Abpromise™**承诺保证使用ab85075于以下的经测试应用

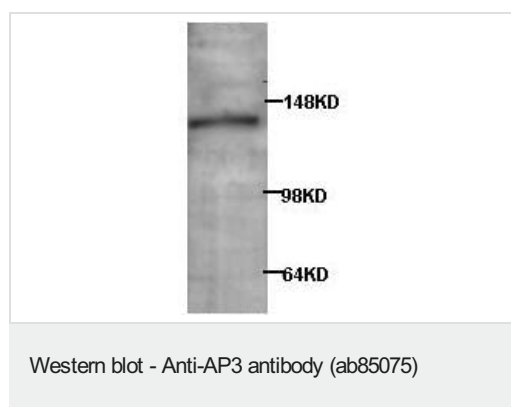
“应用说明”部分 下显示的仅为推荐的起始稀释度;实际最佳的稀释度/浓度应由使用者检定。

应用	Ab评论	说明
WB		1/200 - 1/1000. Detects a band of approximately 130 kDa (predicted molecular weight: 130 kDa).

## 靶标

<b>功能</b>	Part of the AP-3 complex, an adaptor-related complex which is not clathrin-associated. The complex is associated with the Golgi region as well as more peripheral structures. It facilitates the budding of vesicles from the Golgi membrane and may be directly involved in trafficking to lysosomes.
<b>组织特异性</b>	Present in all adult tissues examined with the highest levels in skeletal muscle, heart, pancreas and testis.
<b>序列相似性</b>	Belongs to the adaptor complexes large subunit family. Contains 11 HEAT repeats.
<b>细胞定位</b>	Cytoplasm. Golgi apparatus membrane.

## 图片



Anti-AP3 antibody (ab85075) at 1/500 dilution + HeLa cell lysate

**Predicted band size:** 130 kDa

**Observed band size:** 130 kDa

**Please note:** All products are "FOR RESEARCH USE ONLY. NOT FOR USE IN DIAGNOSTIC PROCEDURES"

## Our Abpromise to you: Quality guaranteed and expert technical support

- Replacement or refund for products not performing as stated on the datasheet
- Valid for 12 months from date of delivery
- Response to your inquiry within 24 hours
- We provide support in Chinese, English, French, German, Japanese and Spanish
- Extensive multi-media technical resources to help you
- We investigate all quality concerns to ensure our products perform to the highest standards

If the product does not perform as described on this datasheet, we will offer a refund or replacement. For full details of the Abpromise, please visit <https://www.abcam.cn/abpromise> or contact our technical team.

## Terms and conditions

---

- Guarantee only valid for products bought direct from Abcam or one of our authorized distributors