

Anti-AP2M1 (phospho T156) antibody [EPR4700] ab109397

重组 RabMAb

8 References 5 图像

概述

产品名称	Anti-AP2M1 (phospho T156)抗体[EPR4700]
描述	兔单克隆抗体[EPR4700] to AP2M1 (phospho T156)
宿主	Rabbit
经测试应用	适用于: WB
种属反应性	与反应: Mouse, Rat, Human
免疫原	Synthetic peptide. This information is proprietary to Abcam and/or its suppliers.
阳性对照	WB: Rat C6, Human HeLa, and Mouse NIH/3T3 whole cell lysates treated with calyculin A.
常规说明	<p>This product is a recombinant monoclonal antibody, which offers several advantages including:</p> <ul style="list-style-type: none">- High batch-to-batch consistency and reproducibility- Improved sensitivity and specificity- Long-term security of supply- Animal-free production <p>For more information see here.</p> <p>Our RabMAb[®] technology is a patented hybridoma-based technology for making rabbit monoclonal antibodies. For details on our patents, please refer to RabMAb[®] patents.</p>

性能

形式	Liquid
存放说明	Shipped at 4°C. Store at +4°C short term (1-2 weeks). Upon delivery aliquot. Store at -20°C long term. Avoid freeze / thaw cycle.
存储溶液	pH: 7.20 Preservative: 0.01% Sodium azide Constituents: 59% PBS, 40% Glycerol (glycerin, glycerine), 0.05% BSA
纯度	Protein A purified
克隆	单克隆
克隆编号	EPR4700
同种型	IgG

应用

The Abpromise guarantee

Abpromise™ 承诺保证使用 ab109397 于以下的经测试应用

“应用说明”部分下显示的仅为推荐的起始稀释度；实际最佳的稀释度/浓度应由使用者检定。

应用	Ab评论	说明
WB		1/1000 - 1/10000. Predicted molecular weight: 50 kDa.

靶标

功能

Component of the adaptor protein complex 2 (AP-2). Adaptor protein complexes function in protein transport via transport vesicles in different membrane traffic pathways. Adaptor protein complexes are vesicle coat components and appear to be involved in cargo selection and vesicle formation. AP-2 is involved in clathrin-dependent endocytosis in which cargo proteins are incorporated into vesicles surrounded by clathrin (clathrin-coated vesicles, CCVs) which are destined for fusion with the early endosome. The clathrin lattice serves as a mechanical scaffold but is itself unable to bind directly to membrane components. Clathrin-associated adaptor protein (AP) complexes which can bind directly to both the clathrin lattice and to the lipid and protein components of membranes are considered to be the major clathrin adaptors contributing the CCV formation. AP-2 also serves as a cargo receptor to selectively sort the membrane proteins involved in receptor-mediated endocytosis. AP-2 seems to play a role in the recycling of synaptic vesicle membranes from the presynaptic surface. AP-2 recognizes Y-X-X-[FILMV] (Y-X-X-Phi) and [ED]-X-X-X-L-[LI] endocytosis signal motifs within the cytosolic tails of transmembrane cargo molecules. AP-2 may also play a role in maintaining normal post-endocytic trafficking through the ARF6-regulated, non-clathrin pathway. The AP-2 mu subunit binds to transmembrane cargo proteins; it recognizes the Y-X-X-Phi motifs. The surface region interacting with to the Y-X-X-Phi motif is inaccessible in cytosolic AP-2, but becomes accessible through a conformational change following phosphorylation of AP-2 mu subunit at 'Tyr-156' in membrane-associated AP-2. The membrane-specific phosphorylation event appears to involve assembled clathrin which activates the AP-2 mu kinase AAK1 (By similarity). Plays a role in endocytosis of frizzled family members upon Wnt signaling.

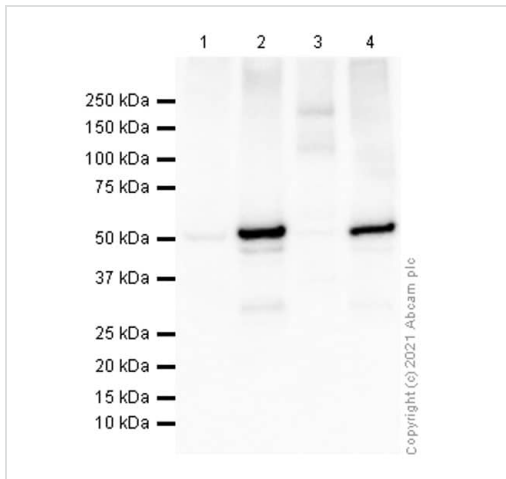
序列相似性

Belongs to the adaptor complexes medium subunit family.
Contains 1 MHD (mu homology) domain.

细胞定位

Cell membrane. Membrane > coated pit. AP-2 appears to be excluded from internalizing CCVs and to disengage from sites of endocytosis seconds before internalization of the nascent CCV.

图片



Western blot - Anti-AP2M1 (phospho T156) antibody [EPR4700] (ab109397)

All lanes : Anti-AP2M1 (phospho T156) antibody [EPR4700] (ab109397) at 1/1000 dilution (Purified)

Lane 1 : C6 (Rat glial tumor glial cell) treated with 100ng/ml calyculin A for 1 hour whole cell lysate prepared by RIPA lysis method

Lane 2 : C6 (Rat glial tumor glial cell) treated with 100ng/ml calyculin A for 1 hour whole cell lysate prepared by 1%SDS Hot lysis method

Lane 3 : HeLa (Human cervix adenocarcinoma epithelial cell) treated with 50nM calyculin A for 2 hours whole cell lysate prepared by RIPA lysis method

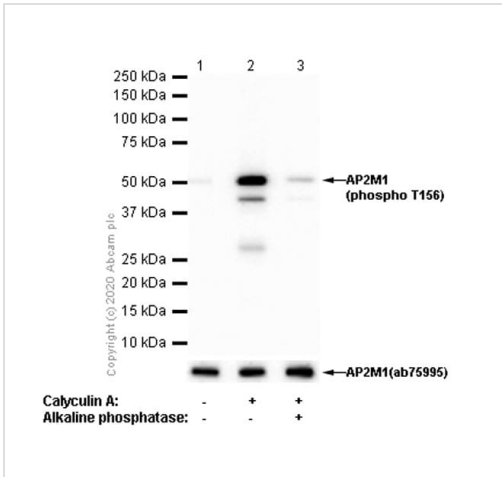
Lane 4 : HeLa (Human cervix adenocarcinoma epithelial cell) treated with 50nM calyculin A for 2 hours whole cell lysate prepared by 1%SDS Hot lysis method

Secondary

All lanes : Goat Anti-Rabbit IgG H&L (HRP) (**ab97051**) at 1/20000 dilution

Predicted band size: 50 kDa

1%SDS Hot lysis method is preferred to enhance the signal.



Western blot - Anti-AP2M1 (phospho T156) antibody [EPR4700] (ab109397)

Lanes 1 & 3 : Anti-AP2M1 (phospho T156) antibody [EPR4700] (ab109397) at 1/1000 dilution (Purified)

Lane 2 : Anti-AP2M1 (phospho T156) antibody [EPR4700] (ab109397) at 1/1000 dilution

Lane 1 : Untreated C6 (Rat glial tumor glial cell) whole cell lysate prepared by 1%SDS Hot lysis method

Lane 2 : C6 (Rat glial tumor glial cell) treated with 100ng/ml calyculin A for 1 hour whole cell lysate prepared by 1%SDS Hot lysis method

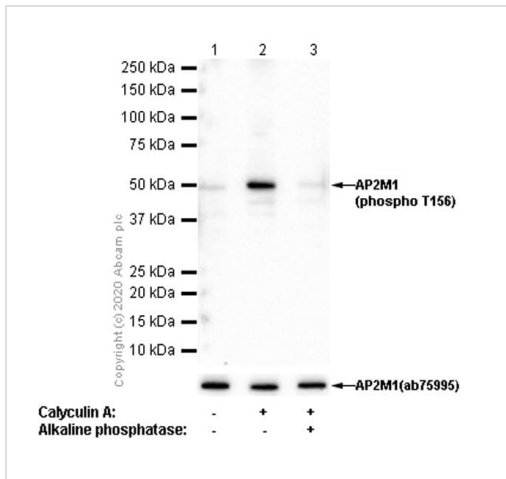
Lane 3 : C6 (Rat glial tumor glial cell) treated with 100ng/ml calyculin A for 1 hour whole cell lysate prepared by 1%SDS Hot lysis method. Membrane then treated with alkaline phosphatase for 1 hour

Lysates/proteins at 15 µg per lane.

Secondary

All lanes : Goat Anti-Rabbit IgG H&L (HRP) (**ab97051**) at 1/20000 dilution

Predicted band size: 50 kDa



Western blot - Anti-AP2M1 (phospho T156) antibody [EPR4700] (ab109397)

Lanes 1 & 3 : Anti-AP2M1 (phospho T156) antibody [EPR4700] (ab109397) at 1/1000 dilution (Purified)

Lane 2 : Anti-AP2M1 (phospho T156) antibody [EPR4700] (ab109397) at 1/1000 dilution

Lane 1 : Untreated NIH/3T3 (Mouse embryonic fibroblast) whole cell lysate

Lane 2 : NIH/3T3 (Mouse embryonic fibroblast) treated with 100nM calyculin A for 30 minutes whole cell lysate

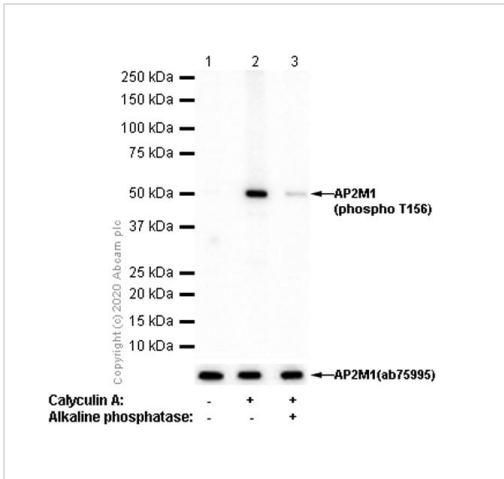
Lane 3 : NIH/3T3 (Mouse embryonic fibroblast) treated with 100nM calyculin A for 30 minutes whole cell lysate. Membrane then treated with Alkaline Phosphatase for 1 hour

Lysates/proteins at 15 µg per lane.

Secondary

All lanes : Goat Anti-Rabbit IgG H&L (HRP) (**ab97051**) at 1/20000 dilution

Predicted band size: 50 kDa



Western blot - Anti-AP2M1 (phospho T156) antibody [EPR4700] (ab109397)

Lane 1 : Anti-AP2M1 (phospho T156) antibody [EPR4700] (ab109397) at 1/1000 dilution (Purified)

Lanes 2-3 : Anti-AP2M1 (phospho T156) antibody [EPR4700] (ab109397) at 1/1000 dilution

Lane 1 : Untreated HeLa (Human cervix adenocarcinoma epithelial cell) whole cell lysate prepared by 1%SDS Hot lysis method

Lane 2 : HeLa (Human cervix adenocarcinoma epithelial cell) treated with 50nM calyculin A for 2 hours whole cell lysate prepared by 1%SDS Hot lysis method

Lane 3 : HeLa (Human cervix adenocarcinoma epithelial cell) treated with 50nM calyculin A for 2 hours whole cell lysate prepared by 1%SDS Hot lysis method. Membrane then treated with Alkaline Phosphatase for 1 hour

Lysates/proteins at 15 µg per lane.

Secondary

All lanes : Goat Anti-Rabbit IgG H&L (HRP) ([ab97051](#)) at 1/20000 dilution

Predicted band size: 50 kDa

Why choose a recombinant antibody?

Research with confidence
Consistent and reproducible results

Long-term and scalable supply
Recombinant technology

Success from the first experiment
Confirmed specificity

Ethical standards compliant
Animal-free production

Anti-AP2M1 (phospho T156) antibody [EPR4700] (ab109397)

Please note: All products are "FOR RESEARCH USE ONLY. NOT FOR USE IN DIAGNOSTIC PROCEDURES"

Our Abpromise to you: Quality guaranteed and expert technical support

- Replacement or refund for products not performing as stated on the datasheet

- Valid for 12 months from date of delivery
- Response to your inquiry within 24 hours
- We provide support in Chinese, English, French, German, Japanese and Spanish
- Extensive multi-media technical resources to help you
- We investigate all quality concerns to ensure our products perform to the highest standards

If the product does not perform as described on this datasheet, we will offer a refund or replacement. For full details of the Abpromise, please visit <https://www.abcam.cn/abpromise> or contact our technical team.

Terms and conditions

- Guarantee only valid for products bought direct from Abcam or one of our authorized distributors