


Anti-AP-A antibody ab109775

1 References 3 图像

概述	
产品名称	Anti-AP-A抗体
描述	兔多克隆抗体to AP-A
宿主	Rabbit
经测试应用	适用于: WB, IHC-P
种属反应性	与反应: Human 预测可用于: Mouse, Rat, Cow, Pig 
免疫原	Recombinant fragment corresponding to Human AP-A (C terminal).
阳性对照	HepG2 and HeLa whole cell lysate; Human Brain (cerebellum) and Human Kidney tissue
常规说明	<p>The Life Science industry has been in the grips of a reproducibility crisis for a number of years. Abcam is leading the way in addressing this with our range of recombinant monoclonal antibodies and knockout edited cell lines for gold-standard validation. Please check that this product meets your needs before purchasing.</p> <p>If you have any questions, special requirements or concerns, please send us an inquiry and/or contact our Support team ahead of purchase. Recommended alternatives for this product can be found below, along with publications, customer reviews and Q&As</p>
性能	
形式	Liquid
存放说明	Shipped at 4°C. Upon delivery aliquot and store at -20°C. Avoid freeze / thaw cycles.
存储溶液	pH: 7.00 Preservative: 0.01% Thimerosal (merthiolate) Constituents: 0.00184% Tris glycine, 10% Glycerol (glycerin, glycerine)
纯度	Immunogen affinity purified
克隆	多克隆
同种型	IgG
应用	

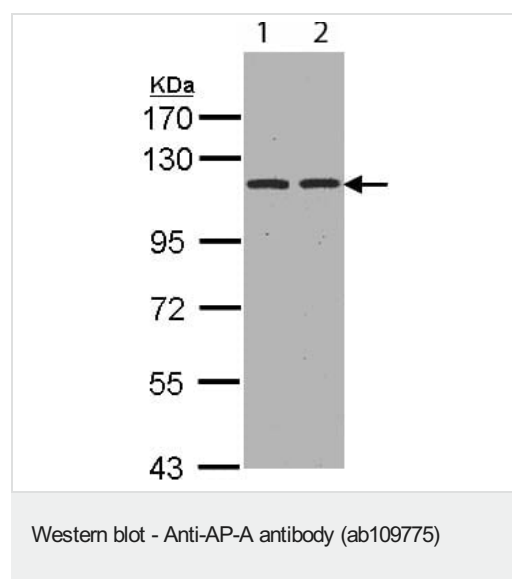
“应用说明”部分 下显示的仅为推荐的起始稀释度;实际最佳的稀释度/浓度应由使用者检定。

应用	Ab评论	说明
WB		1/500 - 1/3000. Predicted molecular weight: 109 kDa.
IHC-P		Use a concentration of 10 µg/ml.

靶标

功能	Appears to have a role in the catabolic pathway of the renin-angiotensin system. Probably plays a role in regulating growth and differentiation of early B-lineage cells.
组织特异性	Expressed by epithelial cells of the proximal tubule cells and the glomerulus of the nephron. Also found in a variety of other tissues.
序列相似性	Belongs to the peptidase M1 family.
细胞定位	Membrane.

图片



All lanes : Anti-AP-A antibody (ab109775) at 1/1000 dilution

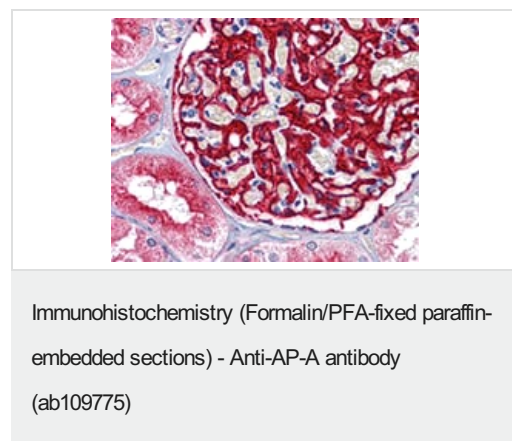
Lane 1 : HepG2 whole cell lysate

Lane 2 : HeLa whole cell lysate

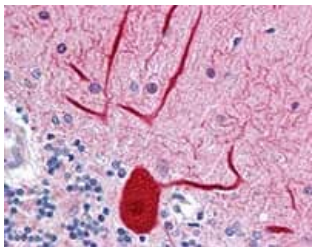
Lysates/proteins at 30 µg per lane.

Predicted band size: 109 kDa

7.5% SDS PAGE



ab109775, at 10 µg/ml, staining AP-A in formalin-fixed, paraffin-embedded Human Kidney tissue by Immunohistochemistry.



ab109775, at 10 µg/ml, staining AP- A in formalin-fixed, paraffin-embedded Human Brain, cerebellum by Immunohistochemistry.

Immunohistochemistry (Formalin/PFA-fixed paraffin-embedded sections) - Anti-AP-A antibody (ab109775)

Please note: All products are "FOR RESEARCH USE ONLY. NOT FOR USE IN DIAGNOSTIC PROCEDURES"

Our Abpromise to you: Quality guaranteed and expert technical support

- Replacement or refund for products not performing as stated on the datasheet
- Valid for 12 months from date of delivery
- Response to your inquiry within 24 hours
- We provide support in Chinese, English, French, German, Japanese and Spanish
- Extensive multi-media technical resources to help you
- We investigate all quality concerns to ensure our products perform to the highest standards

If the product does not perform as described on this datasheet, we will offer a refund or replacement. For full details of the Abpromise, please visit <https://www.abcam.cn/abpromise> or contact our technical team.

Terms and conditions

- Guarantee only valid for products bought direct from Abcam or one of our authorized distributors