

Anti-Annexin A1/ANXA1 antibody ab88865

[3 References](#) [4 图像](#)

概述

产品名称	Anti-Annexin A1/ANXA1 抗体
描述	小鼠多克隆抗体 to Annexin A1/ANXA1
宿主	Mouse
经测试应用	适用于: WB, IHC-P, ICC/IF
种属反应性	与反应: Human
免疫原	Recombinant full length protein within Human Annexin A1/ANXA1. The exact immunogen sequence used to generate this antibody is proprietary information. If additional detail on the immunogen is needed to determine the suitability of the antibody for your needs, please contact our Scientific Support team to discuss your requirements.
阳性对照	Human spleen tissue lysate, Annexin A1 transfected 293T cell lysate, Human endometrium tissue and HeLa cells.
常规说明	<p>The Life Science industry has been in the grips of a reproducibility crisis for a number of years. Abcam is leading the way in addressing this with our range of recombinant monoclonal antibodies and knockout edited cell lines for gold-standard validation. Please check that this product meets your needs before purchasing.</p> <p>If you have any questions, special requirements or concerns, please send us an inquiry and/or contact our Support team ahead of purchase. Recommended alternatives for this product can be found below, along with publications, customer reviews and Q&As</p>

性能

形式	Liquid
存放说明	Shipped at 4°C. Upon delivery aliquot. Store at -20°C or -80°C. Avoid freeze / thaw cycle.
存储溶液	pH: 7.40 Constituent: 100% PBS
纯度	Protein A purified
克隆	多克隆
同种型	IgG

应用

The Abpromise guarantee

Abpromise™ 承诺保证使用 ab88865 于以下的经测试应用

“应用说明”部分下显示的仅为推荐的起始稀释度；实际最佳的稀释度/浓度应由使用者检定。

应用	Ab评论	说明
WB		
IHC-P		
ICC/IF		

应用说明

ICC/IF: Use at a concentration of 10 µg/ml.

IHC-P: Use at a concentration of 3 µg/ml. Perform heat mediated antigen retrieval via the microwave method in 1X citrate buffer (pH 6.0) before commencing with IHC staining protocol.

WB: Use at a concentration of 1 µg/ml. Predicted molecular weight: 39 kDa.

Not yet tested in other applications.

Optimal dilutions/concentrations should be determined by the end user.

靶标

功能

Calcium/phospholipid-binding protein which promotes membrane fusion and is involved in exocytosis. This protein regulates phospholipase A2 activity. It seems to bind from two to four calcium ions with high affinity.

序列相似性

Belongs to the annexin family.

Contains 4 annexin repeats.

结构域

A pair of annexin repeats may form one binding site for calcium and phospholipid.

翻译后修饰

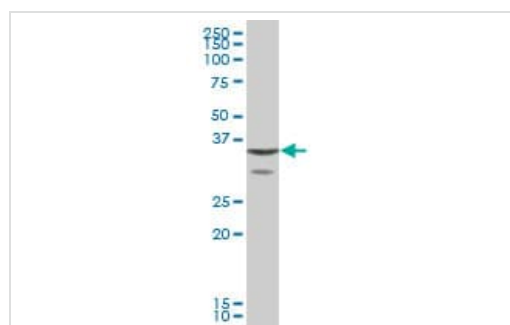
Phosphorylated by protein kinase C, epidermal growth factor receptor/kinase and TRPM7.

Phosphorylation results in loss of the inhibitory activity.

细胞定位

Nucleus. Cytoplasm. Cell projection > cilium. Basolateral cell membrane. Found in the cilium, nucleus and basolateral cell membrane of ciliated cells in the tracheal endothelium (By similarity). Found in the cytoplasm of type II pneumocytes and alveolar macrophages.

图片



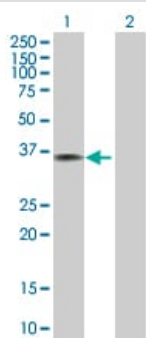
Anti-Annexin A1/ANXA1 antibody (ab88865) at 1 µg/ml + human spleen tissue lysate at 50 µg

Predicted band size: 39 kDa

Observed band size: 35 kDa

Additional bands at: 30 kDa. We are unsure as to the identity of these extra bands.

Western blot - Anti-Annexin A1/ANXA1 antibody (ab88865)



Western blot - Anti-Annexin A1/ANXA1 antibody (ab88865)

All lanes : Anti-Annexin A1/ANXA1 antibody (ab88865) at 1 µg/ml

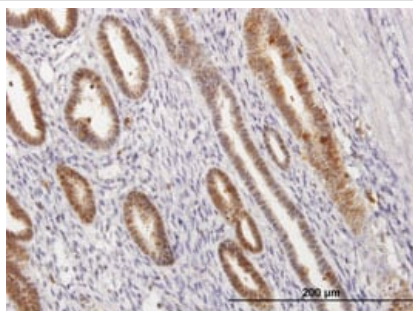
Lane 1 : Annexin A1 transfected 293T cell lysate

Lane 2 : Non-transfected 293T cell lysate

Lysates/proteins at 25 µg per lane.

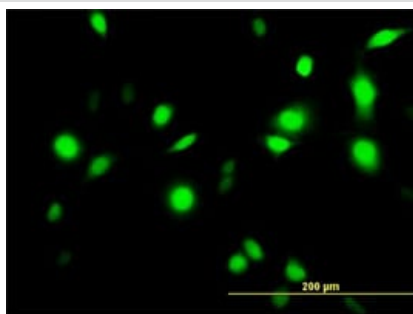
Predicted band size: 39 kDa

Observed band size: 36 kDa



Immunohistochemistry (Formalin/PFA-fixed paraffin-embedded sections) - Anti-Annexin A1/ANXA1 antibody (ab88865)

ab88865, at 3 µg/ml staining Annexin A1 in formalin-fixed, paraffin-embedded human endometrium by Immunohistochemistry.



Immunocytochemistry/ Immunofluorescence - Anti-Annexin A1/ANXA1 antibody (ab88865)

ab88865, at 10 µg/ml staining Annexin A1 in HeLa cells by Immunofluorescence.

Please note: All products are "FOR RESEARCH USE ONLY. NOT FOR USE IN DIAGNOSTIC PROCEDURES"

Our Abpromise to you: Quality guaranteed and expert technical support

- Replacement or refund for products not performing as stated on the datasheet
- Valid for 12 months from date of delivery
- Response to your inquiry within 24 hours

- We provide support in Chinese, English, French, German, Japanese and Spanish
- Extensive multi-media technical resources to help you
- We investigate all quality concerns to ensure our products perform to the highest standards

If the product does not perform as described on this datasheet, we will offer a refund or replacement. For full details of the Abpromise, please visit <https://www.abcam.cn/abpromise> or contact our technical team.

Terms and conditions

- Guarantee only valid for products bought direct from Abcam or one of our authorized distributors