

Anti-ANKHD1 antibody ab117788

[2 References](#) [2 图像](#)

概述

产品名称	Anti-ANKHD1抗体
描述	兔多克隆抗体to ANKHD1
宿主	Rabbit
经测试应用	适用于: WB, IP
种属反应性	与反应: Human 预测可用于: Gorilla, Orangutan 
免疫原	Synthetic peptide, corresponding to a region within amino acids 25-75 of Human ANKHD1 (NP_060217.1).
阳性对照	HeLa and 293T whole cell lysates.
常规说明	<p>The Life Science industry has been in the grips of a reproducibility crisis for a number of years. Abcam is leading the way in addressing this with our range of recombinant monoclonal antibodies and knockout edited cell lines for gold-standard validation. Please check that this product meets your needs before purchasing.</p> <p>If you have any questions, special requirements or concerns, please send us an inquiry and/or contact our Support team ahead of purchase. Recommended alternatives for this product can be found below, along with publications, customer reviews and Q&As</p>

性能

形式	Liquid
存放说明	Shipped at 4°C. Upon delivery aliquot and store at -20°C. Avoid freeze / thaw cycles.
存储溶液	pH: 7 Preservative: 0.09% Sodium azide Constituent: 99% Tris citrate/phosphate
纯度	pH 7-8 Immunogen affinity purified
纯化说明	ab117788 was affinity purified using an epitope specific to ANKHD1 immobilized on solid support.
克隆	多克隆

同种型

IgG

应用

The Abpromise guarantee

Abpromise™ 承诺保证使用 ab117788 于以下的经测试应用

“应用说明”部分 下显示的仅为推荐的起始稀释度;实际最佳的稀释度/浓度应由使用者检定。

应用	Ab评论	说明
WB		1/2000 - 1/10000. Predicted molecular weight: 269 kDa.
IP		Use at 2-10 µg/mg of lysate.

靶标

功能

May play a role as a scaffolding protein that may be associated with the abnormal phenotype of leukemia cells. Isoform 2 may possess an antiapoptotic effect and protect cells during normal cell survival through its regulation of caspases.

组织特异性

Ubiquitous with high expression in cervix, spleen and brain. Expressed in hematopoietic cells with increased expression in leukemia cells. Isoform 2 is highly expressed in spleen with almost no expression in muscle and brain.

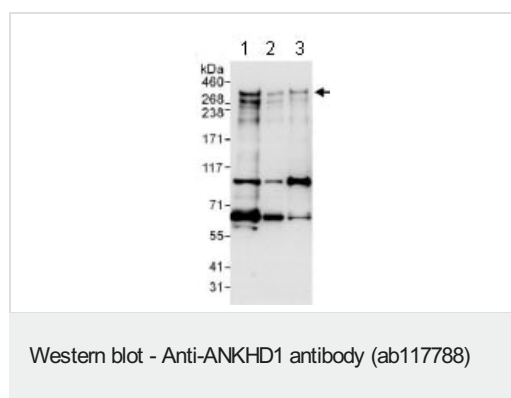
序列相似性

Belongs to the mask family.
Contains 25 ANK repeats.
Contains 1 KH domain.

细胞定位

Cytoplasm.

图片



All lanes : Anti-ANKHD1 antibody (ab117788) at 0.1 µg/ml

Lane 1 : 293T whole cell lysates at 50 µg

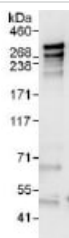
Lane 2 : 293T whole cell lysates at 15 µg

Lane 3 : HeLa whole cell lysates at 50 µg

Developed using the ECL technique.

Predicted band size: 269 kDa

Exposure time: 30 seconds



Immunoprecipitation - Anti-ANKHD1 antibody
(ab117788)

Detection of ANKHD1 by Western Blot of Immunoprecipitate.

ab117788 at 1 µg/ml staining ANKHD1 in 293T whole cell lysate immunoprecipitated using ab117788 at 6 µg/mg lysate (1 mg/IP; 20% of IP loaded/lane).

Detection: Chemiluminescence with exposure time of 10 seconds.

Please note: All products are "FOR RESEARCH USE ONLY. NOT FOR USE IN DIAGNOSTIC PROCEDURES"

Our Abpromise to you: Quality guaranteed and expert technical support

- Replacement or refund for products not performing as stated on the datasheet
- Valid for 12 months from date of delivery
- Response to your inquiry within 24 hours

- We provide support in Chinese, English, French, German, Japanese and Spanish
- Extensive multi-media technical resources to help you
- We investigate all quality concerns to ensure our products perform to the highest standards

If the product does not perform as described on this datasheet, we will offer a refund or replacement. For full details of the Abpromise, please visit <https://www.abcam.cn/abpromise> or contact our technical team.

Terms and conditions

- Guarantee only valid for products bought direct from Abcam or one of our authorized distributors