

Anti-Angiotensinogen antibody ab103549

2 图像

| | |
|-------|---|
| 概述 | |
| 产品名称 | Anti-Angiotensinogen抗体 |
| 描述 | 兔多克隆抗体to Angiotensinogen |
| 宿主 | Rabbit |
| 经测试应用 | 适用于: WB |
| 种属反应性 | 与反应: Human |
| 免疫原 | Recombinant full length protein, corresponding to amino acids 1-485 of Human Angiotensinogen (AAH11519.1). |
| 阳性对照 | Human pancreas tissue lysate and 293T cell lysate transfected with Angiotensinogen. |
| 常规说明 | <p>The Life Science industry has been in the grips of a reproducibility crisis for a number of years. Abcam is leading the way in addressing this with our range of recombinant monoclonal antibodies and knockout edited cell lines for gold-standard validation. Please check that this product meets your needs before purchasing.</p> <p>If you have any questions, special requirements or concerns, please send us an inquiry and/or contact our Support team ahead of purchase. Recommended alternatives for this product can be found below, along with publications, customer reviews and Q&As</p> |
| 性能 | |
| 形式 | Liquid |
| 存放说明 | Shipped at 4°C. Upon delivery aliquot. Store at -20°C or -80°C. Avoid freeze / thaw cycle. |
| 存储溶液 | pH: 7.40 Constituent: 100% PBS |
| 纯度 | Protein A purified |
| 克隆 | 多克隆 |
| 同种型 | IgG |
| 应用 | |

The Abpromise guarantee **Abpromise™**承诺保证使用ab103549于以下的经测试应用

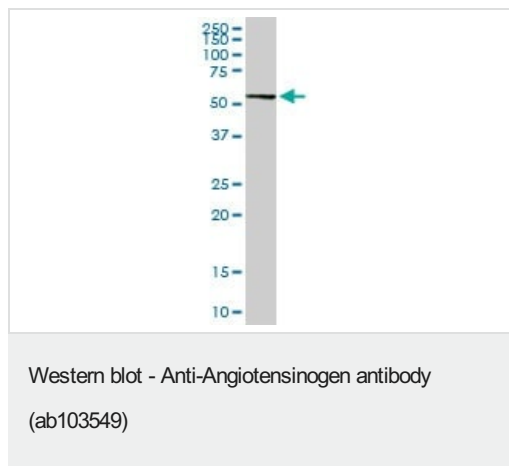
“应用说明”部分 下显示的仅为推荐的起始稀释度;实际最佳的稀释度/浓度应由使用者检定。

| 应用 | Ab评论 | 说明 |
|----|------|---|
| WB | | 1/500 - 1/1000. Predicted molecular weight: 53 kDa. |

靶标

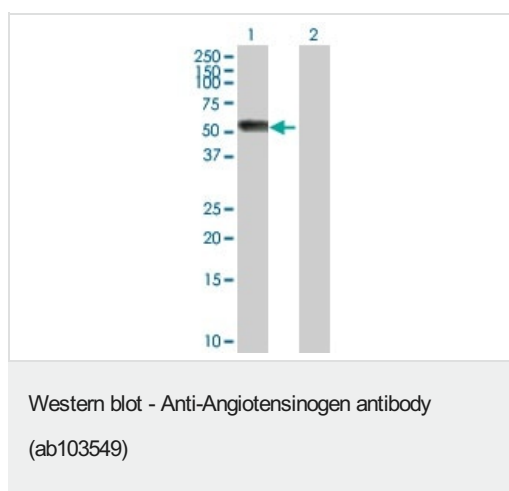
| | |
|-------|--|
| 功能 | <p>Essential component of the renin-angiotensin system (RAS), a potent regulator of blood pressure, body fluid and electrolyte homeostasis. In response to lowered blood pressure, the enzyme renin cleaves angiotensinogen to produce angiotensin-1 (angiotensin 1-10). Angiotensin-1 is a substrate of ACE (angiotensin converting enzyme) that removes a dipeptide to yield the physiologically active peptide angiotensin-2 (angiotensin 1-8). Angiotensin-1 and angiotensin-2 can be further processed to generate angiotensin-3 (angiotensin 2-8), angiotensin-4 (angiotensin 3-8). Angiotensin 1-7 is cleaved from angiotensin-2 by ACE2 or from angiotensin-1 by MME (neprilysin). Angiotensin 1-9 is cleaved from angiotensin-1 by ACE2.</p> <p>Angiotensin-2 acts directly on vascular smooth muscle as a potent vasoconstrictor, affects cardiac contractility and heart rate through its action on the sympathetic nervous system, and alters renal sodium and water absorption through its ability to stimulate the zona glomerulosa cells of the adrenal cortex to synthesize and secrete aldosterone.</p> <p>Angiotensin-3 stimulates aldosterone release.</p> <p>Angiotensin 1-7 is a ligand for the G-protein coupled receptor MAS1 (By similarity). Has vasodilator and antidiuretic effects (By similarity). Has an antithrombotic effect that involves MAS1-mediated release of nitric oxide from platelets.</p> |
| 组织特异性 | Expressed by the liver and secreted in plasma. |
| 疾病相关 | <p>Genetic variations in AGT are a cause of susceptibility to essential hypertension (EHT) [MIM:145500]. Essential hypertension is a condition in which blood pressure is consistently higher than normal with no identifiable cause.</p> <p>Defects in AGT are a cause of renal tubular dysgenesis (RTD) [MIM:267430]. RTD is an autosomal recessive severe disorder of renal tubular development characterized by persistent fetal anuria and perinatal death, probably due to pulmonary hypoplasia from early-onset oligohydramnios (the Potter phenotype).</p> |
| 序列相似性 | Belongs to the serpin family. |
| 翻译后修饰 | <p>Beta-decarboxylation of Asp-34 in angiotensin-2, by mononuclear leukocytes produces alanine. The resulting peptide form, angiotensin-A, has the same affinity for the AT1 receptor as angiotensin-2, but a higher affinity for the AT2 receptor.</p> |
| 细胞定位 | Secreted. |

图片



Anti-Angiotensinogen antibody (ab103549) at 1/500 dilution +
Human pancreas tissue lysate at 50 µg

Predicted band size: 53 kDa



All lanes : Anti-Angiotensinogen antibody (ab103549) at 1/500 dilution

Lane 1 : Angiotensinogen transfected 293T cell

Lane 2 : Non-transfected 293T cell

Lysates/proteins at 25 µg per lane.

Predicted band size: 53 kDa

Please note: All products are "FOR RESEARCH USE ONLY. NOT FOR USE IN DIAGNOSTIC PROCEDURES"

Our Abpromise to you: Quality guaranteed and expert technical support

- Replacement or refund for products not performing as stated on the datasheet
- Valid for 12 months from date of delivery
- Response to your inquiry within 24 hours
- We provide support in Chinese, English, French, German, Japanese and Spanish
- Extensive multi-media technical resources to help you
- We investigate all quality concerns to ensure our products perform to the highest standards

If the product does not perform as described on this datasheet, we will offer a refund or replacement. For full details of the Abpromise, please visit <https://www.abcam.cn/abpromise> or contact our technical team.

Terms and conditions

- Guarantee only valid for products bought direct from Abcam or one of our authorized distributors