


# Anti-Ancient ubiquitous protein 1 antibody ab101984

## 3 图像

### 概述

产品名称	Anti-Ancient ubiquitous蛋白1抗体
描述	兔多克隆抗体to Ancient ubiquitous蛋白1
宿主	Rabbit
经测试应用	适用于: WB, IP, IHC-P
种属反应性	与反应: Human 预测可用于: Chimpanzee, Rhesus monkey, Gorilla, Orangutan 
免疫原	Synthetic peptide corresponding to a region between residue 426 and 476 of Human Ancient ubiquitous protein 1 (NP_853553.1).
阳性对照	Hela and 293T whole cell lysates
常规说明	<p>The Life Science industry has been in the grips of a reproducibility crisis for a number of years. Abcam is leading the way in addressing this with our range of recombinant monoclonal antibodies and knockout edited cell lines for gold-standard validation. Please check that this product meets your needs before purchasing.</p> <p>If you have any questions, special requirements or concerns, please send us an inquiry and/or contact our Support team ahead of purchase. Recommended alternatives for this product can be found below, along with publications, customer reviews and Q&amp;As</p>

### 性能

形式	Liquid
存放说明	Shipped at 4°C. Upon delivery aliquot and store at -20°C. Avoid freeze / thaw cycles.
存储溶液	pH: 7 Preservative: 0.09% Sodium azide Constituent: Tris citrate/phosphate
纯度	Immunogen affinity purified
克隆	多克隆
同种型	IgG

### 应用

The Abpromise guarantee      **Abpromise™**承诺保证使用ab101984于以下的经测试应用

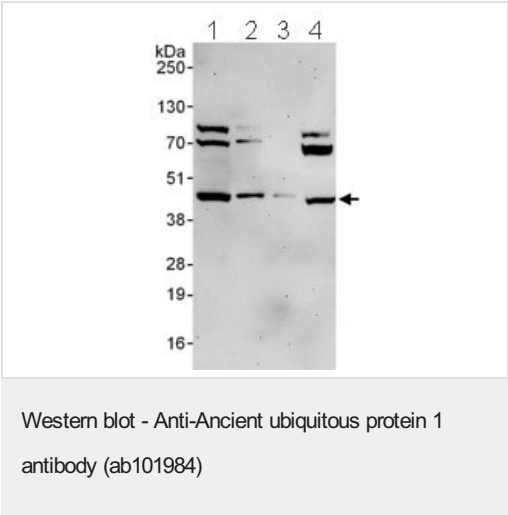
“应用说明”部分 下显示的仅为推荐的起始稀释度;实际最佳的稀释度/浓度应由使用者检定。

应用	Ab评论	说明
WB		1/2000 - 1/10000. Predicted molecular weight: 53 kDa.
IP		Use at 2-5 µg/mg of lysate.
IHC-P		1/500 - 1/2000. Perform heat mediated antigen retrieval with citrate buffer pH 6 before commencing with IHC staining protocol.

靶标

功能	May play a role in the translocation of terminally misfolded proteins from the endoplasmic reticulum lumen to the cytoplasm and their degradation by the proteasome.
组织特异性	Detected in blood platelets and leukocytes (at protein level). Ubiquitous. Highly expressed in placenta, liver, kidney, skeletal muscle, heart and brain.
序列相似性	Belongs to the AUP1 family. Contains 1 CUE domain.
细胞定位	Endoplasmic reticulum membrane.

图片



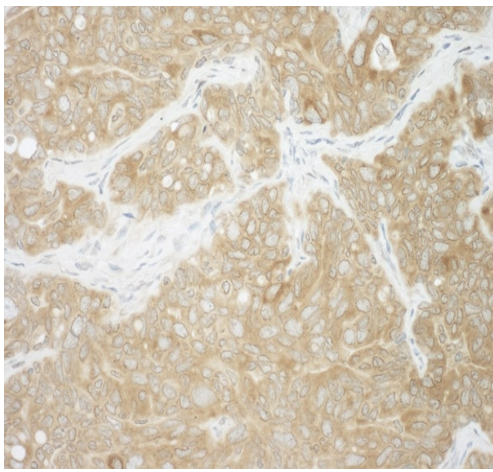
**All lanes :** Anti-Ancient ubiquitous protein 1 antibody (ab101984) at 0.1 µg/ml

- Lane 1 :** HeLa whole cell lysate at 50 µg
- Lane 2 :** HeLa whole cell lysate at 15 µg
- Lane 3 :** HeLa whole cell lysate at 5 µg
- Lane 4 :** 293T whole cell lysate at 50 µg

Developed using the ECL technique.

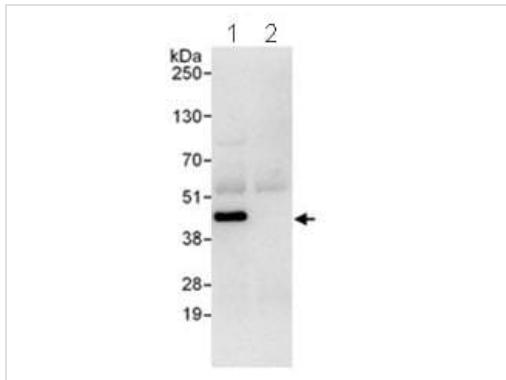
**Predicted band size:** 53 kDa

**Exposure time:** 3 minutes



Immunohistochemistry (Formalin/PFA-fixed paraffin-embedded sections) - Anti-Ancient ubiquitous protein 1 antibody (ab101984)

Immunohistochemistry (Formalin/PFA-fixed paraffin-embedded sections) analysis of human ovarian carcinoma tissue labelling Ancient ubiquitous protein 1 with ab101984 at 1/1000 (1µg/ml).  
Detection: DAB.



Immunoprecipitation - Anti-Ancient ubiquitous protein 1 antibody (ab101984)

Detection of Ancient ubiquitous protein 1 by Western Blot of Immunoprecipitate.  
Lane 1: ab101984, at 1 µg/ml, staining Ancient ubiquitous protein 1 in HeLa whole cell lysate immunoprecipitated using ab101984 at 3 µg/mg lysate (1 mg/IP; 20% of IP loaded/lane).  
Lane 2: Control IgG  
Detection: Chemiluminescence with an exposure time of 10 seconds.

**Please note:** All products are "FOR RESEARCH USE ONLY. NOT FOR USE IN DIAGNOSTIC PROCEDURES"

#### Our Abpromise to you: Quality guaranteed and expert technical support

- Replacement or refund for products not performing as stated on the datasheet
- Valid for 12 months from date of delivery
- Response to your inquiry within 24 hours
- We provide support in Chinese, English, French, German, Japanese and Spanish
- Extensive multi-media technical resources to help you

- We investigate all quality concerns to ensure our products perform to the highest standards

If the product does not perform as described on this datasheet, we will offer a refund or replacement. For full details of the Abpromise, please visit <https://www.abcam.cn/abpromise> or contact our technical team.

### **Terms and conditions**

---

- Guarantee only valid for products bought direct from Abcam or one of our authorized distributors