


Anti-Amino-terminal enhancer of split/AES antibody ab118881

2 图像

概述

产品名称	Anti-Amino-terminal enhancer of split/AES抗体
描述	兔多克隆抗体to Amino-terminal enhancer of split/AES
宿主	Rabbit
经测试应用	适用于: WB, IHC-P
种属反应性	与反应: Human 预测可用于: Mouse, Rat 
免疫原	Synthetic peptide corresponding to Human Amino-terminal enhancer of split/AES (C terminal) conjugated to keyhole limpet haemocyanin.
阳性对照	IHC-P: Human skeletal muscle. WB: HEK-293 cell lysate.
常规说明	<p>The Life Science industry has been in the grips of a reproducibility crisis for a number of years. Abcam is leading the way in addressing this with our range of recombinant monoclonal antibodies and knockout edited cell lines for gold-standard validation. Please check that this product meets your needs before purchasing.</p> <p>If you have any questions, special requirements or concerns, please send us an inquiry and/or contact our Support team ahead of purchase. Recommended alternatives for this product can be found below, along with publications, customer reviews and Q&As</p>

性能

形式	Liquid
存放说明	Shipped at 4°C. Upon delivery aliquot and store at -20°C. Avoid repeated freeze / thaw cycles.
存储溶液	pH: 7.4 Preservative: 0.02% Sodium azide Constituent: 99% PBS
纯度	Immunogen affinity purified
克隆	多克隆
同种型	IgG

应用

The Abpromise guarantee

Abpromise™ 承诺保证使用 ab118881 于以下的经测试应用

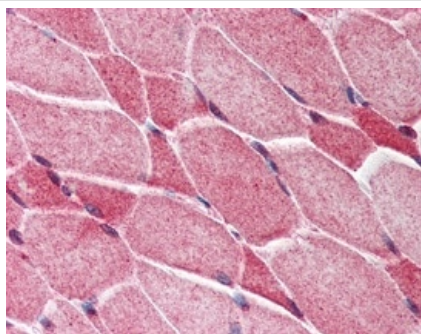
“应用说明”部分 下显示的仅为推荐的起始稀释度; 实际最佳的稀释度/浓度应由使用者检定。

应用	Ab 评论	说明
WB		Use a concentration of 1 - 2 µg/ml. Predicted molecular weight: 21 kDa.
IHC-P		Use a concentration of 2.5 µg/ml. Perform heat mediated antigen retrieval with citrate buffer pH 6 before commencing with IHC staining protocol.

靶标

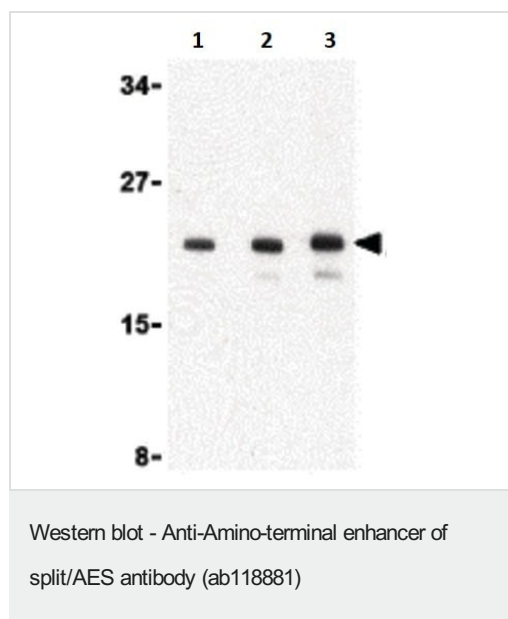
功能	Transcriptional corepressor. Acts as dominant repressor towards other family members. Inhibits NF-kappa-B-regulated gene expression. May be required for the initiation and maintenance of the differentiated state. Essential for the transcriptional repressor activity of SIX3 during retina and lens development.
组织特异性	Found predominantly in muscle, heart and Placenta. In fetal tissues, abundantly expressed in the heart, lung, kidney, brain and liver.
序列相似性	Belongs to the WD repeat Groucho/TLE family.
结构域	Lacks the C-terminal WD repeats.
翻译后修饰	Ubiquitinated by XIAP/BIRC4.
细胞定位	Nucleus.

图片



Human skeletal muscle (formalin fixed, paraffin embedded) stained with ab118881 at 2.5 µg/ml, followed by biotinylated goat anti-rabbit IgG secondary antibody, alkaline phosphatase-streptavidin and chromogen.

Immunohistochemistry (Formalin/PFA-fixed paraffin-embedded sections) - Anti-Amino-terminal enhancer of split/AES antibody (ab118881)



Lane 1 : Anti-Amino-terminal enhancer of split/AES antibody (ab118881) at 1 µg/ml

Lane 2 : Anti-Amino-terminal enhancer of split/AES antibody (ab118881) at 2 µg/ml

Lane 3 : Anti-Amino-terminal enhancer of split/AES antibody (ab118881) at 4 µg/ml

All lanes : HEK-293 (human epithelial cell line from embryonic kidney) cell lysate

Predicted band size: 21 kDa

Please note: All products are "FOR RESEARCH USE ONLY. NOT FOR USE IN DIAGNOSTIC PROCEDURES"

Our Abpromise to you: Quality guaranteed and expert technical support

- Replacement or refund for products not performing as stated on the datasheet
- Valid for 12 months from date of delivery
- Response to your inquiry within 24 hours
- We provide support in Chinese, English, French, German, Japanese and Spanish
- Extensive multi-media technical resources to help you
- We investigate all quality concerns to ensure our products perform to the highest standards

If the product does not perform as described on this datasheet, we will offer a refund or replacement. For full details of the Abpromise, please visit <https://www.abcam.cn/abpromise> or contact our technical team.

Terms and conditions

- Guarantee only valid for products bought direct from Abcam or one of our authorized distributors