


### Anti-AMH antibody [5/6] ab24542

★★★★★ [2 Abreviews](#) [12 References](#) [1 图像](#)

#### 概述

产品名称	Anti-AMH抗体[5/6]
描述	小鼠单克隆抗体[5/6] to AMH
宿主	Mouse
经测试应用	适用于: IHC-P
种属反应性	与反应: Mouse 预测可用于: Rat, Cow, Pig 
免疫原	Synthetic peptide: VPTAYAGKLLISLSEERISAHHPNMVATEC , corresponding to C terminal amino acids 527-557 of Human AMH.  <a href="#">Run BLAST with</a>  <a href="#">Run BLAST with</a>
阳性对照	Mouse ovary tissue.
常规说明	<p>The Life Science industry has been in the grips of a reproducibility crisis for a number of years. Abcam is leading the way in addressing this with our range of recombinant monoclonal antibodies and knockout edited cell lines for gold-standard validation. Please check that this product meets your needs before purchasing.</p> <p>If you have any questions, special requirements or concerns, please send us an inquiry and/or contact our Support team ahead of purchase. Recommended alternatives for this product can be found below, along with publications, customer reviews and Q&amp;As</p>

#### 性能

形式	Liquid
存放说明	Shipped at 4°C. Store at +4°C short term (1-2 weeks). Upon delivery aliquot. Store at -20°C long term.
存储溶液	Preservative: 0.09% Sodium azide Constituent: Tissue culture supernatant
纯度	Tissue culture supernatant
克隆	单克隆
克隆编号	5/6
骨髓瘤	Sp2/0

同种型

IgG1

应用

The Abpromise guarantee

Abpromise™承诺保证使用ab24542于以下的经测试应用

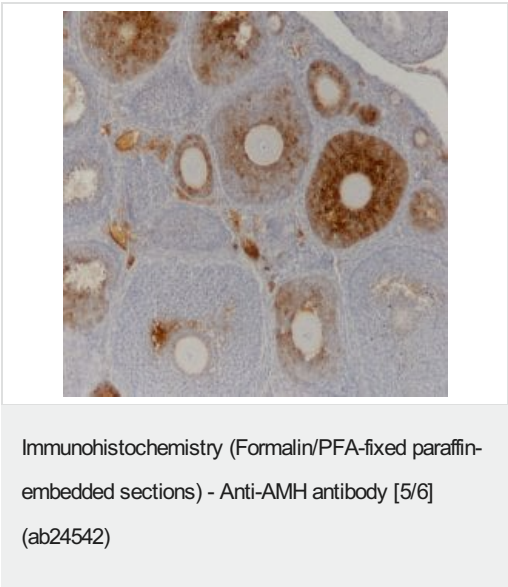
“应用说明”部分 下显示的仅为推荐的起始稀释度;实际最佳的稀释度/浓度应由使用者检定。

应用	Ab评论	说明
IHC-P		1/20 - 1/40. Perform heat mediated antigen retrieval with citrate buffer pH 6 before commencing with IHC staining protocol.

靶标

相关性	Anti mullerian hormone (AMH) is a member of the TGF beta superfamily. It is secreted as a homodimeric 140kD disulphide linked precursor that is cleaved to release the mature 30kD homodimer. Originally classified as a foetal testicular hormone that inhibits Mullerian duct development, AMH is expressed post natally by immature Sertoli cells, and to a lesser degree by granulosa cells. AMH plays a role in testicular differentiation and in the regulation of ovarian follicle growth.
细胞定位	Secreted

图片



Ab24542, at a dilution of 1/20 to 1/40, staining formalin fixed paraffin embedded ovary tissue from a 25 day old mouse by Immunohistochemistry.

Please note: All products are "FOR RESEARCH USE ONLY. NOT FOR USE IN DIAGNOSTIC PROCEDURES"

Our Abpromise to you: Quality guaranteed and expert technical support

- Replacement or refund for products not performing as stated on the datasheet

- Valid for 12 months from date of delivery
- Response to your inquiry within 24 hours
- We provide support in Chinese, English, French, German, Japanese and Spanish
- Extensive multi-media technical resources to help you
- We investigate all quality concerns to ensure our products perform to the highest standards

If the product does not perform as described on this datasheet, we will offer a refund or replacement. For full details of the Abpromise, please visit <https://www.abcam.cn/abpromise> or contact our technical team.

#### **Terms and conditions**

---

- Guarantee only valid for products bought direct from Abcam or one of our authorized distributors