

Anti-ALS2CL antibody ab119937

1 图像

概述

产品名称	Anti-ALS2CL 抗体
描述	兔多克隆抗体 to ALS2CL
宿主	Rabbit
经测试应用	适用于: WB
种属反应性	与反应: Mouse
免疫原	Synthetic peptide from N terminal residues of Human ALS2CL protein (NM_147129.3).
阳性对照	Mouse kidney lysate.
常规说明	<p>The Life Science industry has been in the grips of a reproducibility crisis for a number of years. Abcam is leading the way in addressing this with our range of recombinant monoclonal antibodies and knockout edited cell lines for gold-standard validation. Please check that this product meets your needs before purchasing.</p> <p>If you have any questions, special requirements or concerns, please send us an inquiry and/or contact our Support team ahead of purchase. Recommended alternatives for this product can be found below, along with publications, customer reviews and Q&As</p>

性能

形式	Lyophilized: Reconstitute in 200ul sterile H2O.
存放说明	Shipped at 4°C. Upon delivery aliquot and store at -20°C. Avoid repeated freeze / thaw cycles.
存储溶液	<p>pH: 7.20</p> <p>Preservative: 0.02% Sodium azide</p> <p>Constituents: PBS, 1% BSA</p>
纯度	Immunogen affinity purified
纯化说明	ab119937 is purified by a peptide affinity column.
克隆	多克隆
同种型	IgG

应用

The Abpromise guarantee

Abpromise™ 承诺保证使用 ab119937 于以下的经测试应用

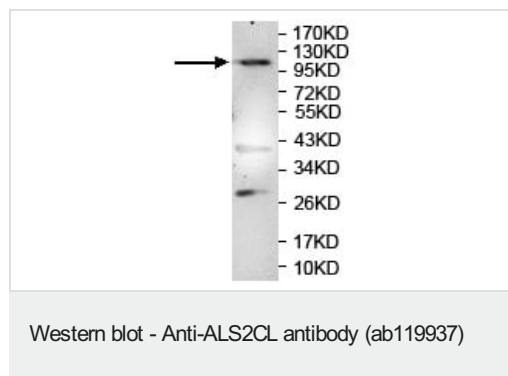
“应用说明”部分 下显示的仅为推荐的起始稀释度;实际最佳的稀释度/浓度应由使用者检定。

应用	Ab评论	说明
WB		1/500 - 1/1000. Detects a band of approximately 108 kDa (predicted molecular weight: 22, 23, 53, 85, 108 kDa).

靶标

功能	Acts as a guanine nucleotide exchange factor (GEF) for Rab5 GTPase. Regulates the ALS2-mediated endosome dynamics.
组织特异性	Expressed in heart and kidney.
序列相似性	Contains 8 MORN repeats. Contains 1 VPS9 domain.
细胞定位	Cytoplasm. Distributed onto the vesicular compartments in the cytoplasm with strong punctated staining. Colocalizes with RAB5A onto the vesicular/membranous compartments in the cytoplasm, particularly to the leading edges of the cells.

图片



Anti-ALS2CL antibody (ab119937) at 1/500 dilution + Mouse kidney lysate

Predicted band size: 22, 23, 53, 85, 108 kDa

Observed band size: 108 kDa

Please note: All products are "FOR RESEARCH USE ONLY. NOT FOR USE IN DIAGNOSTIC PROCEDURES"

Our Abpromise to you: Quality guaranteed and expert technical support

- Replacement or refund for products not performing as stated on the datasheet
- Valid for 12 months from date of delivery
- Response to your inquiry within 24 hours
- We provide support in Chinese, English, French, German, Japanese and Spanish
- Extensive multi-media technical resources to help you
- We investigate all quality concerns to ensure our products perform to the highest standards

If the product does not perform as described on this datasheet, we will offer a refund or replacement. For full details of the Abpromise, please visit <https://www.abcam.cn/abpromise> or contact our technical team.

Terms and conditions

- Guarantee only valid for products bought direct from Abcam or one of our authorized distributors