


# Anti-alpha Tubulin antibody - Microtubule Marker ab15246

★★★★★ **18 Abreviews**   **254 References**   **3 图像**

### 概述

产品名称	Anti-alpha Tubulin抗体- Microtubule Marker
描述	兔多克隆抗体to alpha Tubulin - Microtubule Marker
宿主	Rabbit
特异性	Homology to both Tubulin alpha-3E chain and Tubulin alpha-4A chain
经测试应用	<b>适用于:</b> WB, IHC-P
种属反应性	<b>与反应:</b> Human <b>预测可用于:</b> Mouse, Rat, Sheep, Rabbit, Chicken, Guinea pig, Cow, Pig, Xenopus laevis, Drosophila melanogaster, Zebrafish, Gerbil, Newt 
免疫原	Synthetic peptide within Human alpha Tubulin aa 400 to the C-terminus. The exact sequence is proprietary. Database link: <a href="#">Q6PEY2</a>
常规说明	<b>This product is FOR RESEARCH USE ONLY. For commercial use, please contact <a href="mailto:partnerships@abcam.com">partnerships@abcam.com</a>.</b>  The Life Science industry has been in the grips of a reproducibility crisis for a number of years. Abcam is leading the way in addressing this with our range of recombinant monoclonal antibodies and knockout edited cell lines for gold-standard validation. Please check that this product meets your needs before purchasing.  If you have any questions, special requirements or concerns, please send us an inquiry and/or contact our Support team ahead of purchase. Recommended alternatives for this product can be found below, along with publications, customer reviews and Q&As

### 性能

形式	Liquid
存放说明	Shipped at 4°C. Upon delivery aliquot and store at -20°C. Avoid freeze / thaw cycles.
存储溶液	pH: 7.60 Preservative: 0.1% Sodium azide Constituents: PBS, 1% BSA
纯度	Immunogen affinity purified
克隆	多克隆

同种型

IgG

应用

The Abpromise guarantee

Abpromise™承诺保证使用ab15246于以下的经测试应用

“应用说明”部分 下显示的仅为推荐的起始稀释度;实际最佳的稀释度/浓度应由使用者检定。

应用	Ab评论	说明
WB	★★★★★ (14)	Use at an assay dependent concentration. Detects a band of approximately 55 kDa (predicted molecular weight: 50 kDa).
IHC-P	★★★★★ (1)	1/100. Perform heat mediated antigen retrieval before commencing with IHC staining protocol.

靶标

功能

Tubulin is the major constituent of microtubules. It binds two moles of GTP, one at an exchangeable site on the beta chain and one at a non-exchangeable site on the alpha chain.

序列相似性

Belongs to the tubulin family.

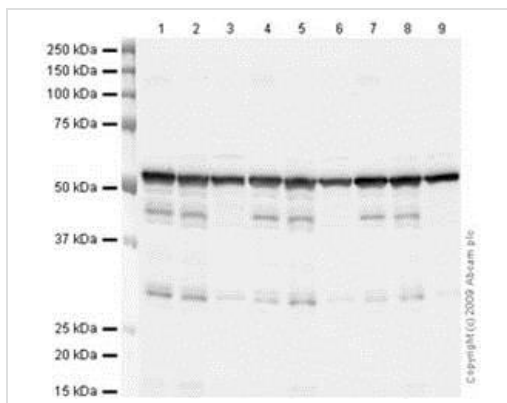
翻译后修饰

Some glutamate residues at the C-terminus are polyglutamylated. This modification occurs exclusively on glutamate residues and results in polyglutamate chains on the gamma-carboxyl group. Also monoglycylated but not polyglycylated due to the absence of functional TTL10 in human. Monoglycylation is mainly limited to tubulin incorporated into axonemes (cilia and flagella) whereas glutamylation is prevalent in neuronal cells, centrioles, axonemes, and the mitotic spindle. Both modifications can coexist on the same protein on adjacent residues, and lowering glycylation levels increases polyglutamylated, and reciprocally. The precise function of such modifications is still unclear but they regulate the assembly and dynamics of axonemal microtubules.  
Acetylation of alpha chains at Lys-40 stabilizes microtubules and affects affinity and processivity of microtubule motors. This modification has a role in multiple cellular functions, ranging from cell motility, cell cycle progression or cell differentiation to intracellular trafficking and signaling.

细胞定位

Cytoplasm > cytoskeleton.

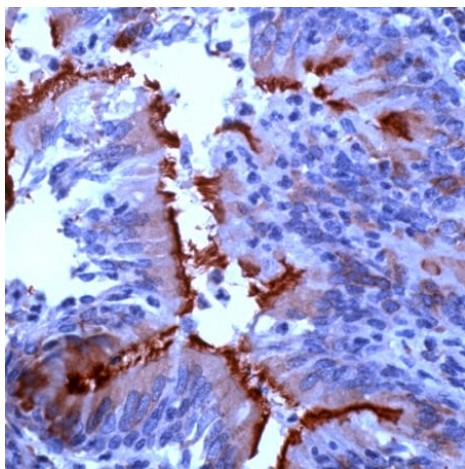
图片



Western blot - Anti-alpha Tubulin antibody -  
Microtubule Marker (ab15246)

Lanes: 1, 4, 7 - SK N BE; 2, 5, 8 - TE 671; 3, 6, 9 - HeLa

Lanes: 1-3: 4°C (1 freeze/thaw); 4-6: 4°C (2 freeze/thaws); 7-9 : 4°C (4 freeze/thaws)



Immunohistochemistry (Formalin/PFA-fixed paraffin-  
embedded sections) - Anti-alpha Tubulin antibody -  
Microtubule Marker (ab15246)

ab15246 at 1/200 dilution, staining alpha Tubulin in Human lung  
tissue section by Immunohistochemistry (Formalin/ PFA fixed  
paraffin- embedded tissue sections).



Western blot - Anti-alpha Tubulin antibody -  
Microtubule Marker (ab15246)

**All lanes** : Anti-alpha Tubulin antibody - Microtubule Marker  
(ab15246) at 1 µg/ml

**Lane 1** : SK N BE (Human neuroblastoma) Whole Cell Lysate

**Lane 2** : TE 671 (Human Rhabdomyosarcoma) Whole Cell Lysate

Lysates/proteins at 10 µg per lane.

### Secondary

**All lanes** : Goat polyclonal to Rabbit IgG - H&L - Pre-Adsorbed  
(HRP) at 1/3000 dilution

**Predicted band size:** 50 kDa

**Observed band size:** 55 kDa

**Please note:** All products are "FOR RESEARCH USE ONLY. NOT FOR USE IN DIAGNOSTIC PROCEDURES"

### **Our Abpromise to you: Quality guaranteed and expert technical support**

---

- Replacement or refund for products not performing as stated on the datasheet
- Valid for 12 months from date of delivery
- Response to your inquiry within 24 hours
  
- We provide support in Chinese, English, French, German, Japanese and Spanish
- Extensive multi-media technical resources to help you
- We investigate all quality concerns to ensure our products perform to the highest standards

If the product does not perform as described on this datasheet, we will offer a refund or replacement. For full details of the Abpromise, please visit <https://www.abcam.cn/abpromise> or contact our technical team.

### **Terms and conditions**

---

- Guarantee only valid for products bought direct from Abcam or one of our authorized distributors