

### Anti-Alpha-synuclein antibody [syn211] ab80627

★★★★★ 4 Abreviews 26 References 1 图像

#### 概述

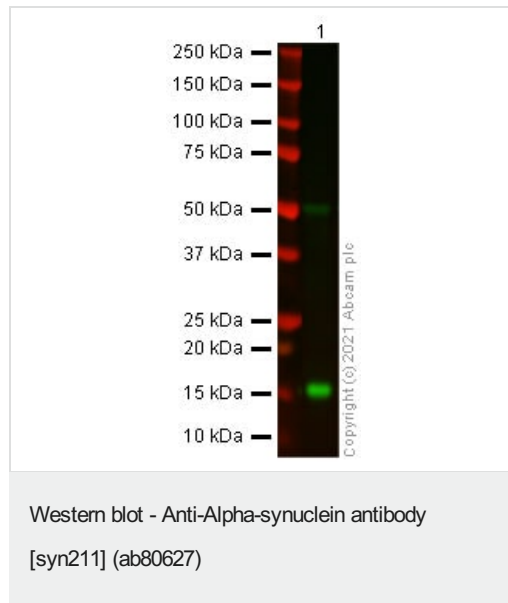
产品名称	Anti-Alpha-synuclein抗体[syn211]
描述	小鼠单克隆抗体[syn211] to Alpha-synuclein
宿主	Mouse
经测试应用	适用于: WB 不适用于: Flow Cyt or IHC-P
种属反应性	与反应: Human 不与反应: Mouse, Rat
免疫原	Recombinant full length protein corresponding to Human Alpha-synuclein. Human recombinant alpha Synuclein.
阳性对照	WB: Human cerebellum tissue lysate.
常规说明	<p>This product was changed from ascites to tissue culture supernatant on 16/Jul/19. Lot numbers higher than GR3282717 are from tissue culture supernatant. Please note that the dilutions may need to be adjusted accordingly. If you have any questions, please do not hesitate to contact our scientific support team.</p> <p>This antibody clone is manufactured by Abcam. If you require a custom buffer formulation or conjugation for your experiments, please contact <a href="mailto:orders@abcam.com">orders@abcam.com</a>.</p> <p>The Life Science industry has been in the grips of a reproducibility crisis for a number of years. Abcam is leading the way in addressing this with our range of recombinant monoclonal antibodies and knockout edited cell lines for gold-standard validation. Please check that this product meets your needs before purchasing.</p> <p>If you have any questions, special requirements or concerns, please send us an inquiry and/or contact our Support team ahead of purchase. Recommended alternatives for this product can be found below, along with publications, customer reviews and Q&amp;As</p>

#### 性能

形式	Liquid
存放说明	Shipped at 4°C. Store at +4°C short term (1-2 weeks). Upon delivery aliquot. Store at -20°C long term. Avoid freeze / thaw cycle.
存储溶液	Preservative: 0.02% Sodium azide Constituents: PBS, 6.97% L-Arginine



## 图片



Anti-Alpha-synuclein antibody [syn211] (ab80627) at 5 µg/ml +  
Human cerebellum tissue lysate at 20 µg

**Secondary**

Goat anti-Mouse IgG H&L (IRDye® 800CW) preadsorbed  
(**ab216772**) at 1/10000 dilution

**Predicted band size:** 14 kDa

**Observed band size:** 14 kDa

This blot was produced using a 4-12% Bis-tris under the MES buffer system. The gel was run at 200V for 35 minutes before being transferred onto a Nitrocellulose membrane at 30V for 70 minutes. The membrane was blocked for an hour using 3% milk before being incubated overnight at 4°C at a 5ug/ml concentration. Antibody binding was detected using Goat anti-Mouse IgG H&L (IRDye® 800CW) preadsorbed (**ab216772**) secondary antibody at 1/10000 dilution for 1 hour at room temperature before imaging.

**Please note:** All products are "FOR RESEARCH USE ONLY. NOT FOR USE IN DIAGNOSTIC PROCEDURES"

**Our Abpromise to you: Quality guaranteed and expert technical support**

- Replacement or refund for products not performing as stated on the datasheet
- Valid for 12 months from date of delivery
- Response to your inquiry within 24 hours
- We provide support in Chinese, English, French, German, Japanese and Spanish
- Extensive multi-media technical resources to help you
- We investigate all quality concerns to ensure our products perform to the highest standards

If the product does not perform as described on this datasheet, we will offer a refund or replacement. For full details of the Abpromise, please visit <https://www.abcam.cn/abpromise> or contact our technical team.

**Terms and conditions**

- Guarantee only valid for products bought direct from Abcam or one of our authorized distributors