


# Anti-Alpha Skeletal Muscle Actin antibody [337CT 30.10.1] - Loading Control ab88226

★ ★ ★ ★ ★ [1 Abreviews](#) [2 References](#) [1 图像](#)

### 概述

产品名称	Anti-Alpha Skeletal Muscle Actin抗体[337CT 30.10.1] - Loading Control
描述	小鼠单克隆抗体[337CT 30.10.1] to Alpha Skeletal Muscle Actin - Loading Control
宿主	Mouse
经测试应用	适用于: WB
种属反应性	与反应: Mouse, Rat, Human 预测可用于: Rabbit, Chicken, Cow, Pig, Orangutan 
免疫原	Synthetic peptide corresponding to Human Alpha Skeletal Muscle Actin aa 1 to the C-terminus.
阳性对照	This antibody gave a positive signal in HeLa and TE 671 whole cell lysates, and in the following tissue lysates: Human Heart (data not shown); Mouse Heart; Rat Heart; Human Skeletal Muscle; Mouse Skeletal Muscle; Rat Skeletal Muscle.
常规说明	<p>This antibody clone is manufactured by Abcam. If you require a custom buffer formulation or conjugation for your experiments, please contact <a href="mailto:orders@abcam.com">orders@abcam.com</a>.</p> <p>The Life Science industry has been in the grips of a reproducibility crisis for a number of years. Abcam is leading the way in addressing this with our range of recombinant monoclonal antibodies and knockout edited cell lines for gold-standard validation. Please check that this product meets your needs before purchasing.</p> <p>If you have any questions, special requirements or concerns, please send us an inquiry and/or contact our Support team ahead of purchase. Recommended alternatives for this product can be found below, along with publications, customer reviews and Q&amp;As</p>

### 性能

形式	Liquid
存放说明	Shipped at 4°C. Store at +4°C short term (1-2 weeks). Upon delivery aliquot. Store at -20°C or -80°C. Avoid freeze / thaw cycle.
存储溶液	pH: 7.40 Preservative: 0.02% Sodium azide Constituent: PBS
纯度	Protein G purified

克隆	单克隆
克隆编号	337CT 30.10.1
骨髓瘤	Sp2/0
同种型	IgG1
轻链类型	kappa

应用

The Abpromise guarantee      **Abpromise™**承诺保证使用ab88226于以下的经测试应用

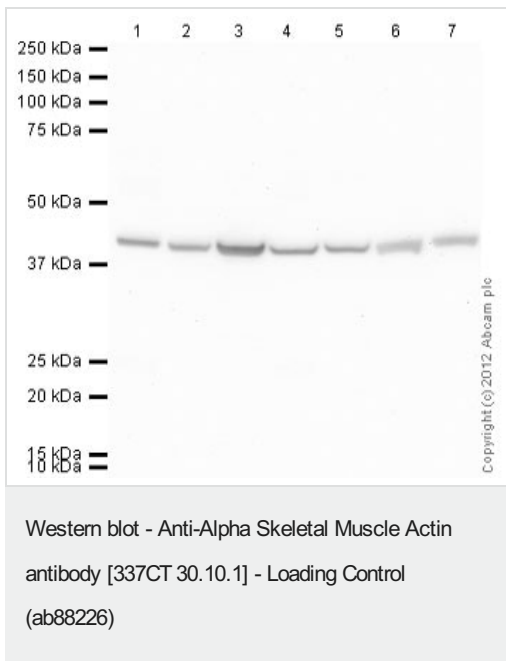
“应用说明”部分 下显示的仅为推荐的起始稀释度;实际最佳的稀释度/浓度应由使用者检定。

应用	Ab评论	说明
WB		Use a concentration of 5 µg/ml. Detects a band of approximately 42 kDa (predicted molecular weight: 42 kDa). Block using 3% milk.

靶标

功能	Actins are highly conserved proteins that are involved in various types of cell motility and are ubiquitously expressed in all eukaryotic cells.
疾病相关	<p>Defects in ACTA1 are the cause of nemaline myopathy type 3 (NEM3) [MIM:161800]. A form of nemaline myopathy. Nemaline myopathies are muscular disorders characterized by muscle weakness of varying severity and onset, and abnormal thread-or rod-like structures in muscle fibers on histologic examination. The phenotype at histological level is variable. Some patients present areas devoid of oxidative activity containg (cores) within myofibers. Core lesions are unstructured and poorly circumscribed.</p> <p>Defects in ACTA1 are a cause of myopathy congenital with excess of thin myofilaments (MPCETM) [MIM:161800]. A congenital muscular disorder characterized at histological level by areas of sarcoplasm devoid of normal myofibrils and mitochondria, and replaced with dense masses of thin filaments. Central cores, rods, ragged red fibers, and necrosis are absent.</p> <p>Defects in ACTA1 are a cause of congenital myopathy with fiber-type disproportion (CFTD) [MIM:255310]; also known as congenital fiber-type disproportion myopathy (CFTDM). CFTD is a genetically heterogeneous disorder in which there is relative hypotrophy of type 1 muscle fibers compared to type 2 fibers on skeletal muscle biopsy. However, these findings are not specific and can be found in many different myopathic and neuropathic conditions.</p>
序列相似性	Belongs to the actin family.
细胞定位	Cytoplasm > cytoskeleton.

图片



**All lanes :** Anti-Alpha Skeletal Muscle Actin antibody [337CT 30.10.1] - Loading Control (ab88226) at 5 µg/ml

**Lane 1 :** Heart (Mouse) Tissue Lysate

**Lane 2 :** Heart (Rat) Tissue Lysate

**Lane 3 :** Human skeletal muscle tissue lysate - total protein ([ab29330](#))

**Lane 4 :** Skeletal Muscle (Mouse) Tissue Lysate

**Lane 5 :** Skeletal Muscle (Rat) Tissue Lysate

**Lane 6 :** TE 671 (Human Rhabdomyosarcoma) Whole Cell Lysate

**Lane 7 :** HeLa (Human epithelial carcinoma cell line) Whole Cell Lysate

Lysates/proteins at 20 µg per lane.

#### Secondary

**All lanes :** Goat Anti-Mouse IgG H&L (HRP) preadsorbed ([ab97040](#)) at 1/5000 dilution

Developed using the ECL technique.

Performed under reducing conditions.

**Predicted band size:** 42 kDa

**Observed band size:** 42 kDa

**Exposure time:** 30 seconds

Blocked using 3% milk.

**Please note:** All products are "FOR RESEARCH USE ONLY. NOT FOR USE IN DIAGNOSTIC PROCEDURES"

#### Our Abpromise to you: Quality guaranteed and expert technical support

- Replacement or refund for products not performing as stated on the datasheet
- Valid for 12 months from date of delivery
- Response to your inquiry within 24 hours

- We provide support in Chinese, English, French, German, Japanese and Spanish
- Extensive multi-media technical resources to help you
- We investigate all quality concerns to ensure our products perform to the highest standards

If the product does not perform as described on this datasheet, we will offer a refund or replacement. For full details of the Abpromise, please visit <https://www.abcam.cn/abpromise> or contact our technical team.

#### **Terms and conditions**

---

- Guarantee only valid for products bought direct from Abcam or one of our authorized distributors