


### Anti-alpha Internexin antibody [2E3] ab7654

★★★★★ [3 Abreviews](#) [3 References](#) [3 图像](#)

#### 概述

产品名称	Anti-alpha Internexin抗体[2E3]
描述	小鼠单克隆抗体[2E3] to alpha Internexin
宿主	Mouse
特异性	specifically recognizes a-internexin.
经测试应用	<b>适用于:</b> WB, Flow Cyt, ICC/IF
种属反应性	<b>与反应:</b> Mouse, Rat, Cow, Human <b>预测可用于:</b> Mammals 
免疫原	Recombinant full length protein corresponding to Rat alpha Internexin. (Purified from E. coli).
表位	C-terminal non-helical extension of the protein.
阳性对照	WB: Rat and mouse brain and spinal cord lysates; Cow spinal cord lysate. Flow Cyt: SH-SY5Y cells.
常规说明	<p>The Life Science industry has been in the grips of a reproducibility crisis for a number of years. Abcam is leading the way in addressing this with our range of recombinant monoclonal antibodies and knockout edited cell lines for gold-standard validation. Please check that this product meets your needs before purchasing.</p> <p>If you have any questions, special requirements or concerns, please send us an inquiry and/or contact our Support team ahead of purchase. Recommended alternatives for this product can be found below, along with publications, customer reviews and Q&amp;As</p>

#### 性能

形式	Liquid
存放说明	Shipped at 4°C. Store at +4°C short term (1-2 weeks). Upon delivery aliquot. Store at -20°C or -80°C. Avoid freeze / thaw cycle.
存储溶液	Preservative: 0.03% Sodium azide Constituents: PBS, 50% Glycerol
纯度	Tissue culture supernatant
克隆	单克隆
克隆编号	2E3
同种型	IgG1

轻链类型

kappa

应用

The Abpromise guarantee      **Abpromise™**承诺保证使用ab7654于以下的经测试应用

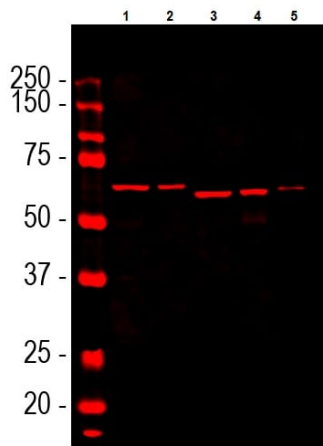
“应用说明”部分 下显示的仅为推荐的起始稀释度;实际最佳的稀释度/浓度应由使用者检定。

应用	Ab评论	说明
WB	★☆☆☆☆ (1)	1/100. Predicted molecular weight: 66 kDa.
Flow Cyt		1/100. <b>ab170190</b> - Mouse monoclonal IgG1, is suitable for use as an isotype control with this antibody.
ICC/IF		1/500.

靶标

功能	Class-IV neuronal intermediate filament that is able to self-assemble. It is involved in the morphogenesis of neurons. It may form an independent structural network without the involvement of other neurofilaments or it may cooperate with NF-L to form the filamentous backbone to which NF-M and NF-H attach to form the cross-bridges.
组织特异性	Found predominantly in adult CNS.
序列相似性	Belongs to the intermediate filament family.
发展阶段	Expressed in brain as early as the 16th week of gestation, and increased rapidly and reached a steady state level by the 18th week of gestation.
翻译后修饰	O-glycosylated. Phosphorylated upon DNA damage, probably by ATM or ATR.

图片



Western blot - Anti-alpha Internexin antibody [2E3]  
(ab7654)

**All lanes :** Anti-alpha Internexin antibody [2E3] (ab7654) at  
1/10000 dilution

**Lane 1 :** Rat brain lysate

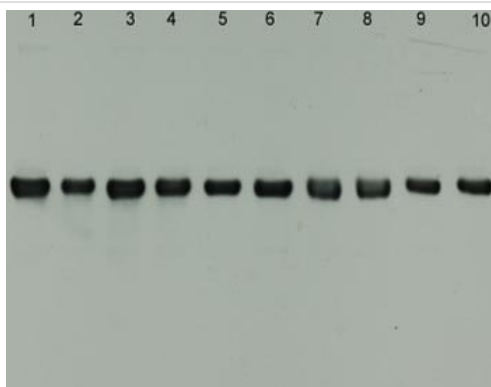
**Lane 2 :** Rat spinal cord lysate

**Lane 3 :** Mouse brain lysate

**Lane 4 :** Mouse spinal cord lysate

**Lane 5 :** Cow spinal cord lysate

**Predicted band size:** 66 kDa



Western blot - Anti-alpha Internexin antibody [2E3]  
(ab7654)

**All lanes :** Anti-alpha Internexin antibody [2E3] (ab7654)

**Lanes 1-2 :** Crude homogenate of rat facial nucleus at 3 days after  
experimental injury

**Lanes 3-4 :** Crude homogenate of rat facial nucleus at 5 days after  
experimental injury

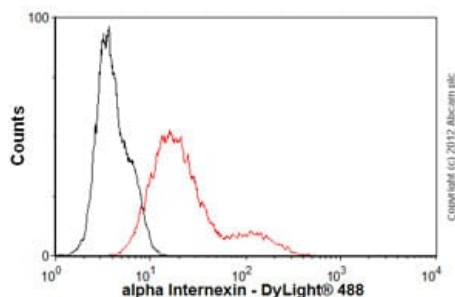
**Lanes 5-6 :** Crude homogenate of rat facial nucleus at 7 days after  
experimental injury

**Lanes 7-8 :** Crude homogenate of rat facial nucleus at 14 days  
after experimental injury

**Lanes 9-10 :** Crude homogenate of rat facial nucleus at 28 days  
after experimental injury

**Predicted band size:** 66 kDa

**Observed band size:** 66 kDa



Flow Cytometry - Anti-alpha Internexin antibody  
[2E3] (ab7654)

Overlay histogram showing SH-SY5Y cells stained with ab7654 (red line). The cells were fixed with 4% paraformaldehyde (10 min) and then permeabilized with 0.1% PBS-Tween for 20 min. The cells were then incubated in 1x PBS / 10% normal goat serum / 0.3M glycine to block non-specific protein-protein interactions followed by the antibody (ab7654, 1/100 dilution) for 30 min at 22°C. The secondary antibody used was DyLight® 488 goat anti-mouse IgG (H+L) ([ab96879](#)) at 1/500 dilution for 30 min at 22°C. Isotype control antibody (black line) was mouse IgG1 [ICIGG1] ([ab91353](#), 2µg/1x10<sup>6</sup> cells) used under the same conditions. Acquisition of >5,000 events was performed. This antibody gave a positive signal in SH-SY5Y cells fixed with 80% methanol (5 min)/permeabilized

with 0.1% PBS-Tween for 20 min used under the same conditions.

**Please note:** All products are "FOR RESEARCH USE ONLY. NOT FOR USE IN DIAGNOSTIC PROCEDURES"

### **Our Abpromise to you: Quality guaranteed and expert technical support**

---

- Replacement or refund for products not performing as stated on the datasheet
- Valid for 12 months from date of delivery
- Response to your inquiry within 24 hours
- We provide support in Chinese, English, French, German, Japanese and Spanish
- Extensive multi-media technical resources to help you
- We investigate all quality concerns to ensure our products perform to the highest standards

If the product does not perform as described on this datasheet, we will offer a refund or replacement. For full details of the Abpromise, please visit <https://www.abcam.cn/abpromise> or contact our technical team.

### **Terms and conditions**

---

- Guarantee only valid for products bought direct from Abcam or one of our authorized distributors