




Anti-alpha COP I/COPA antibody ab2913

1 References **1 图像**

概述

产品名称	Anti-alpha COP I/COPA抗体
描述	兔多克隆抗体to alpha COP I/COPA
宿主	Rabbit
特异性	Detects coatomer-protein I alpha (COP I alpha).
经测试应用	适用于: ICC/IF
种属反应性	与反应: Human 预测可用于: Mouse, Cow, Dog, Rice 
免疫原	Synthetic peptide corresponding to Rat alpha COP I/COPA aa 1-19. Sequence: MLTKFETKSARVKGLSFHP (Peptide available as ab4931)  Run BLAST with  Run BLAST with

常规说明

The Life Science industry has been in the grips of a reproducibility crisis for a number of years. Abcam is leading the way in addressing this with our range of recombinant monoclonal antibodies and knockout edited cell lines for gold-standard validation. Please check that this product meets your needs before purchasing.

If you have any questions, special requirements or concerns, please send us an inquiry and/or contact our Support team ahead of purchase. Recommended alternatives for this product can be found below, along with publications, customer reviews and Q&As

性能

形式	Liquid
存放说明	Shipped at 4°C. Store at +4°C short term (1-2 weeks). Upon delivery aliquot. Store at -20°C or -80°C. Avoid freeze / thaw cycle.
存储溶液	Preservative: 0.05% Sodium azide Constituents: 0.1% BSA, 99% PBS
纯度	Immunogen affinity purified
Primary antibody说明	Coatomer proteins are involved in regulating transport between the endoplasmic reticulum (ER) and the Golgi complex and in intra-Golgi transport. There exist two coatomer-protein mechanisms

(COP I and COP II) and although they have mechanistic parallels, they are molecularly distinct. The COP I coat is comprised of seven subunits (alpha-, beta-, beta'-, gamma-, delta-, epsilon-, and zeta-COP) in a complex called coatomer. Assembly of the coatomer (COP I) onto non-clathrin coated vesicles is regulated by ADP-ribosylation factor (ARF). Vesicle formation, budding, fusion, and disassembly is dependent on GDP-GTP exchange, COP I, and ARF. COP I has been shown to facilitate retrograde intracellular transport from the ER to the Golgi complex. By contrast, COPII facilitates anterograde transport between these subcellular organelles. COP II has been shown to be independently and selectively recruited to the ER relative to COP I subunits.

克隆 多克隆
同种型 IgG

应用

The Abpromise guarantee **Abpromise™**承诺保证使用ab2913于以下的经测试应用

“应用说明”部分 下显示的仅为推荐的起始稀释度;实际最佳的稀释度/浓度应由使用者检定。

应用	Ab评论	说明
ICC/IF		Use a concentration of 3 µg/ml.

靶标

功能 The coatomer is a cytosolic protein complex that binds to dilysine motifs and reversibly associates with Golgi non-clathrin-coated vesicles, which further mediate biosynthetic protein transport from the ER, via the Golgi up to the trans Golgi network. Coatomer complex is required for budding from Golgi membranes, and is essential for the retrograde Golgi-to-ER transport of dilysine-tagged proteins. In mammals, the coatomer can only be recruited by membranes associated to ADP-ribosylation factors (ARFs), which are small GTP-binding proteins; the complex also influences the Golgi structural integrity, as well as the processing, activity, and endocytic recycling of LDL receptors.

Xenin stimulates exocrine pancreatic secretion. It inhibits pentagastrin-stimulated secretion of acid, to induce exocrine pancreatic secretion and to affect small and large intestinal motility. In the gut, xenin interacts with the neurotensin receptor.

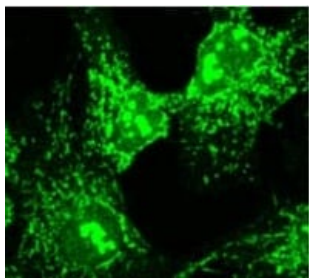
组织特异性 Uniformly expressed in a wide range of adult and fetal tissues. Xenin is found in gastric, duodenal and jejunal mucosa. Circulates in the blood. Seems to be confined to specific endocrine cells.

序列相似性 Contains 6 WD repeats.

发展阶段 Xenin is released into the circulation after a meal.

细胞定位 Secreted and Cytoplasm. Golgi apparatus membrane. Cytoplasmic vesicle > COPI-coated vesicle membrane. The coatomer is cytoplasmic or polymerized on the cytoplasmic side of the Golgi, as well as on the vesicles/buds originating from it.

图片



ICC/IF of COP1 in Hela Cells

Immunocytochemistry/ Immunofluorescence - Anti-alpha COP I/COPA antibody (ab2913)

Please note: All products are "FOR RESEARCH USE ONLY. NOT FOR USE IN DIAGNOSTIC PROCEDURES"

Our Abpromise to you: Quality guaranteed and expert technical support

- Replacement or refund for products not performing as stated on the datasheet
- Valid for 12 months from date of delivery
- Response to your inquiry within 24 hours
- We provide support in Chinese, English, French, German, Japanese and Spanish
- Extensive multi-media technical resources to help you
- We investigate all quality concerns to ensure our products perform to the highest standards

If the product does not perform as described on this datasheet, we will offer a refund or replacement. For full details of the Abpromise, please visit <https://www.abcam.cn/abpromise> or contact our technical team.

Terms and conditions

- Guarantee only valid for products bought direct from Abcam or one of our authorized distributors