

# Anti-Alpha B Crystallin antibody [EPR2752] ab76467

重组 RabMAb

★★★★★ [2 Abreviews](#) [5 References](#) [12 图像](#)

### 概述

产品名称	Anti-Alpha B Crystallin抗体[EPR2752]
描述	兔单克隆抗体[EPR2752] to Alpha B Crystallin
宿主	Rabbit
经测试应用	<b>适用于:</b> WB, IHC-P, ICC/IF, IP <b>不适用于:</b> Flow Cyt
种属反应性	<b>与反应:</b> Rat, Human
免疫原	Synthetic peptide within Human Alpha B Crystallin (C terminal). The exact sequence is proprietary.
阳性对照	Fetal heart and rat eyeball lysates; human heart muscle tissue.
常规说明	<p>This product is a recombinant monoclonal antibody, which offers several advantages including:</p> <ul style="list-style-type: none"><li>- High batch-to-batch consistency and reproducibility</li><li>- Improved sensitivity and specificity</li><li>- Long-term security of supply</li><li>- Animal-free production</li></ul> <p>For more information <a href="#">see here</a>.</p> <p>Our RabMAb<sup>®</sup> technology is a patented hybridoma-based technology for making rabbit monoclonal antibodies. For details on our patents, please refer to <a href="#">RabMAb<sup>®</sup> patents</a>.</p> <p>Mouse: We have preliminary internal testing data to indicate this antibody may not react with this species. Please contact us for more information.</p>

### 性能

形式	Liquid
存放说明	Shipped at 4°C. Upon delivery aliquot and store at -20°C. Avoid repeated freeze / thaw cycles.
存储溶液	pH: 7.20 Preservative: 0.01% Sodium azide Constituents: 59% PBS, 40% Glycerol (glycerin, glycerine), 0.05% BSA
纯度	Protein A purified
克隆	单克隆

克隆编号                               EPR2752  
 同种型                                   lgG

## 应用

**The Abpromise guarantee**             **Abpromise™** 承诺保证使用ab76467于以下的经测试应用

“应用说明”部分 下显示的仅为推荐的起始稀释度;实际最佳的稀释度/浓度应由使用者检定。

应用	Ab评论	说明
WB	★★★★★ (1)	1/1000 - 1/2000. Predicted molecular weight: 20 kDa.
IHC-P	★★★★☆ (1)	1/250. Perform heat mediated antigen retrieval before commencing with IHC staining protocol. See <a href="#">IHC antigen retrieval protocols</a> .
ICC/IF		1/250.
IP		1/250.

应用说明                                 Is unsuitable for Flow Cyt.

## 靶标

**功能**                                       May contribute to the transparency and refractive index of the lens.

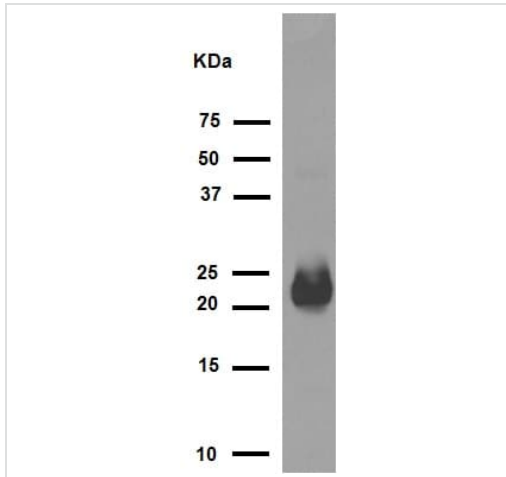
**组织特异性**                             Lens as well as other tissues.

**疾病相关**                               Defects in CRYAB are the cause of myofibrillar alpha-B crystallin-related (MFM-CRYAB) [MIM:608810]. A neuromuscular disorder that results in weakness of the proximal and distal limb muscles, weakness of the neck, velopharynx and trunk muscles, hypertrophic cardiomyopathy, and cataract in a subset of patients.

**序列相似性**                             Belongs to the small heat shock protein (HSP20) family.

**细胞定位**                               Cytoplasm. Nucleus. Translocates to the nucleus during heat shock and resides in sub-nuclear structures known as SC35 speckles or nuclear splicing speckles.

## 图片



Western blot - Anti-Alpha B Crystallin antibody [EPR2752] (ab76467)

Anti-Alpha B Crystallin antibody [EPR2752] (ab76467) at 1/1000 dilution (purified) + Rat eyeball lysate at 10 µg

**Secondary**

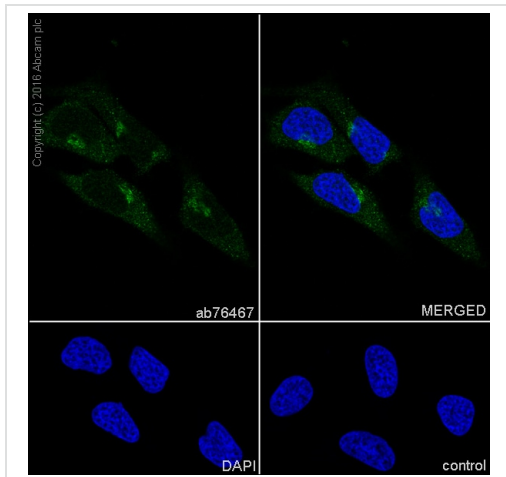
HRP goat anti-rabbit (H+L) at 1/1000 dilution

**Predicted band size:** 20 kDa

**Observed band size:** 22 kDa

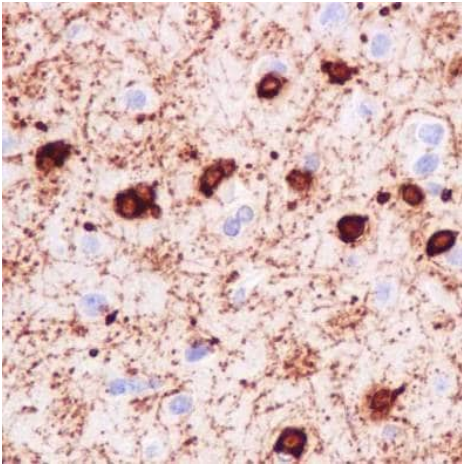
Blocking buffer: 5% NFDM/TBST

Dilution buffer: 5% NFDM/TBST



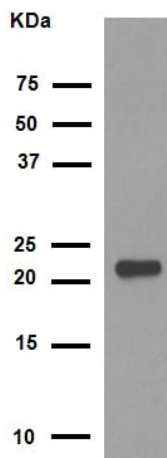
Immunocytochemistry/ Immunofluorescence - Anti-Alpha B Crystallin antibody [EPR2752] (ab76467)

Immunocytochemistry/Immunofluorescence analysis of HeLa (Human epithelial cell line from cervix adenocarcinoma) labelling Alpha B Crystallin with purified ab76467 at 1/250. Cells were fixed with 4% PFA and permeabilized with 0.1% triton X-100. **ab150077** Goat anti rabbit IgG (Alexa Fluor® 488) at 1/1000 was used as the secondary antibody. Nuclei were counterstained with DAPI. PBS was used instead of the primary antibody as the negative control.



Immunohistochemistry (Formalin/PFA-fixed paraffin-embedded sections) - Anti-Alpha B Crystallin antibody [EPR2752] (ab76467)

Immunohistochemical staining of paraffin embedded human brain with purified ab76467 at a working dilution of 1 in 250. The secondary antibody used is a HRP polymer for rabbit IgG. The sample is counter-stained with hematoxylin. Antigen retrieval was performed using Tris-EDTA buffer, pH 9.0.



Western blot - Anti-Alpha B Crystallin antibody [EPR2752] (ab76467)

Anti-Alpha B Crystallin antibody [EPR2752] (ab76467) at 1/1000 dilution (purified) + Human fetal heart tissue lysate at 10 µg/ml

**Secondary**

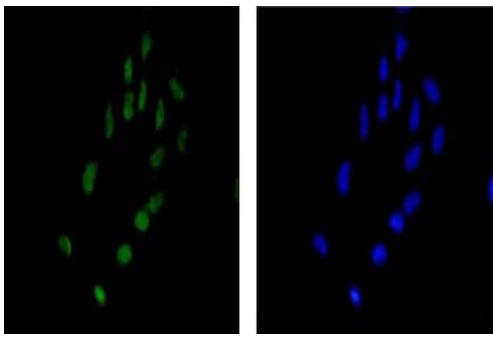
HRP goat anti-rabbit (H+L) at 1/1000 dilution

**Predicted band size:** 20 kDa

**Observed band size:** 22 kDa

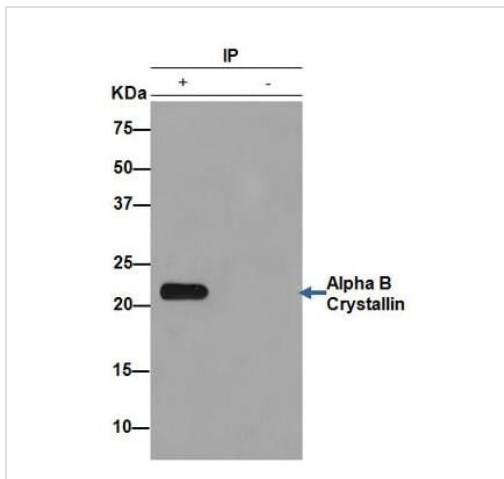
Blocking buffer: 5% NFDm/TBST

Dilution buffer: 5% NFDm/TBST



Immunocytochemistry/ Immunofluorescence - Anti-Alpha B Crystallin antibody [EPR2752] (ab76467)

Immunofluorescence staining of HeLa cells with purified ab76467 at a working dilution of 1 in 200, counter-stained with DAPI. The secondary antibody was Alexa Fluor® 488 goat anti rabbit, used at a dilution of 1 in 200. The cells were fixed in 4% PFA.

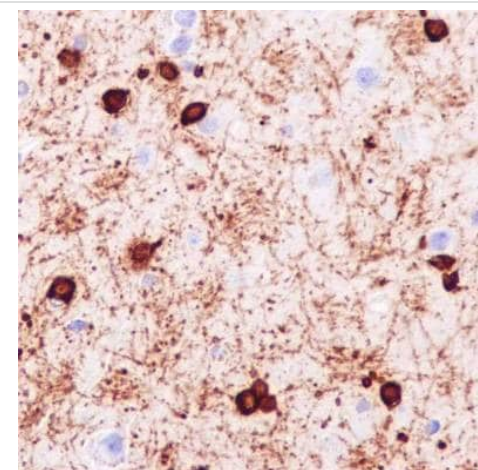


Western blot - Anti-Alpha B Crystallin antibody [EPR2752] (ab76467)

ab76467 (purified) at 1/250 immunoprecipitating alpha B crystallin in human fetal heart (Lane 1). Lane 2 - PBS. For western blotting, a HRP-conjugated anti-rabbit IgG, specific to the non-reduced form of IgG was used as the secondary antibody (1/1500).

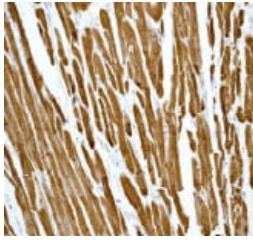
Blocking buffer and concentration: 5% NFDm/TBST.

Diluting buffer and concentration: 5% NFDm /TBST.



Immunohistochemistry (Formalin/PFA-fixed paraffin-embedded sections) - Anti-Alpha B Crystallin antibody [EPR2752] (ab76467)

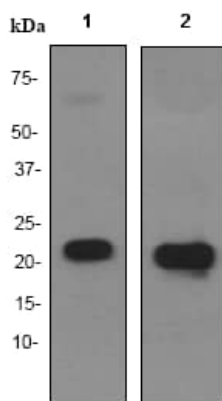
Immunohistochemical staining of paraffin embedded human brain with unpurified ab76467 at a working dilution of 1 in 250. The secondary antibody used is a HRP polymer for rabbit IgG. The sample is counter-stained with hematoxylin. Antigen retrieval was performed using Tris-EDTA buffer, pH 9.0.



Immunohistochemistry (Formalin/PFA-fixed paraffin-embedded sections) - Anti-Alpha B Crystallin antibody [EPR2752] (ab76467)

Immunohistochemical staining of alpha B Crystallin in paraffin embedded human heart muscle with ab76467 at a 1/100 dilution.

Perform heat mediated antigen retrieval before commencing with IHC staining protocol.



Western blot - Anti-Alpha B Crystallin antibody [EPR2752] (ab76467)

**Lane 1** : Anti-Alpha B Crystallin antibody [EPR2752] (ab76467) at 1/5000 dilution

**Lane 2** : Anti-Alpha B Crystallin antibody [EPR2752] (ab76467) at 1/20000 dilution

**Lane 1** : fetal heart lysate

**Lane 2** : rat eyeball lysate

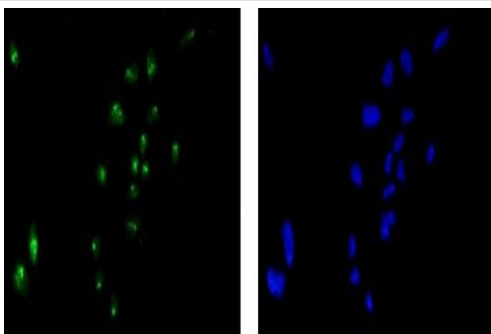
Lysates/proteins at 10 µg per lane.

#### Secondary

**All lanes** : goat anti-rabbit HRP at 1/2000 dilution

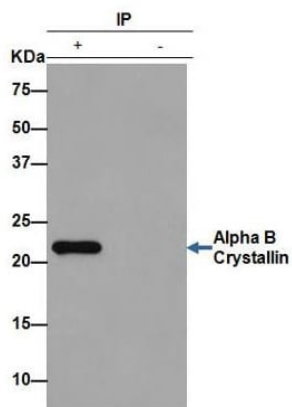
**Predicted band size:** 20 kDa

**Observed band size:** 20 kDa



Immunocytochemistry/ Immunofluorescence - Anti-Alpha B Crystallin antibody [EPR2752] (ab76467)

Immunofluorescence staining of HeLa cells with unpurified ab76467 at a working dilution of 1 in 200, counter-stained with DAPI. The secondary antibody was Alexa Fluor<sup>®</sup> 488 goat anti rabbit, used at a dilution of 1 in 200. The cells were fixed in 4% PFA.




Immunoprecipitation - Anti-Alpha B Crystallin antibody [EPR2752] (ab76467)

ab76467 (unpurified) at 1/250 immunoprecipitating alpha B crystallin in human fetal heart (Lane 1). Lane 2 - PBS. For western blotting, a HRP-conjugated anti-rabbit IgG, specific to the non-reduced form of IgG was used as the secondary antibody (1/1500).

Blocking buffer and concentration: 5% NFDN/TBST.

Diluting buffer and concentration: 5% NFDN /TBST.

### Why choose a recombinant antibody?

 <b>Research with confidence</b> Consistent and reproducible results	 <b>Long-term and scalable supply</b> Recombinant technology
 <b>Success from the first experiment</b> Confirmed specificity	 <b>Ethical standards compliant</b> Animal-free production

Anti-Alpha B Crystallin antibody [EPR2752] (ab76467)

**Please note:** All products are "FOR RESEARCH USE ONLY. NOT FOR USE IN DIAGNOSTIC PROCEDURES"

### Our Abpromise to you: Quality guaranteed and expert technical support

- Replacement or refund for products not performing as stated on the datasheet
- Valid for 12 months from date of delivery
- Response to your inquiry within 24 hours
- We provide support in Chinese, English, French, German, Japanese and Spanish
- Extensive multi-media technical resources to help you
- We investigate all quality concerns to ensure our products perform to the highest standards

If the product does not perform as described on this datasheet, we will offer a refund or replacement. For full details of the Abpromise, please visit <https://www.abcam.cn/abpromise> or contact our technical team.

### **Terms and conditions**

---

- Guarantee only valid for products bought direct from Abcam or one of our authorized distributors