


Anti-alpha Adducin (phospho S726) antibody [EP734Y] ab40760

RabMAb

2 References **4 图像**

概述

产品名称	Anti-alpha Adducin (phospho S726)抗体[EP734Y]
描述	兔单克隆抗体[EP734Y] to alpha Adducin (phospho S726)
宿主	Rabbit
经测试应用	适用于: WB, IHC-P, ICC/IF 不适用于: Flow Cyt or IP
种属反应性	与反应: Human 预测可用于: Mouse, Rat 
免疫原	Synthetic peptide. This information is proprietary to Abcam and/or its suppliers.
阳性对照	WB: HeLa cell lysate. IHC-P: Human lung tissue. ICC/IF: HeLa cells.
常规说明	Our RabMAb [®] technology is a patented hybridoma-based technology for making rabbit monoclonal antibodies. For details on our patents, please refer to RabMAb[®] patents . The Life Science industry has been in the grips of a reproducibility crisis for a number of years. Abcam is leading the way in addressing this with our range of recombinant monoclonal antibodies and knockout edited cell lines for gold-standard validation. Please check that this product meets your needs before purchasing. If you have any questions, special requirements or concerns, please send us an inquiry and/or contact our Support team ahead of purchase. Recommended alternatives for this product can be found below, along with publications, customer reviews and Q&As

性能

形式	Liquid
存放说明	Shipped at 4°C. Upon delivery aliquot and store at -20°C. Avoid freeze / thaw cycles.
存储溶液	pH: 7.20 Preservative: 0.05% Sodium azide Constituents: 99% Tissue culture supernatant, 0.1% BSA
纯度	Tissue culture supernatant
克隆	单克隆
克隆编号	EP734Y

同种型 IgG

应用

The Abpromise guarantee **Abpromise™**承诺保证使用ab40760于以下的经测试应用

“应用说明”部分 下显示的仅为推荐的起始稀释度;实际最佳的稀释度/浓度应由使用者检定。

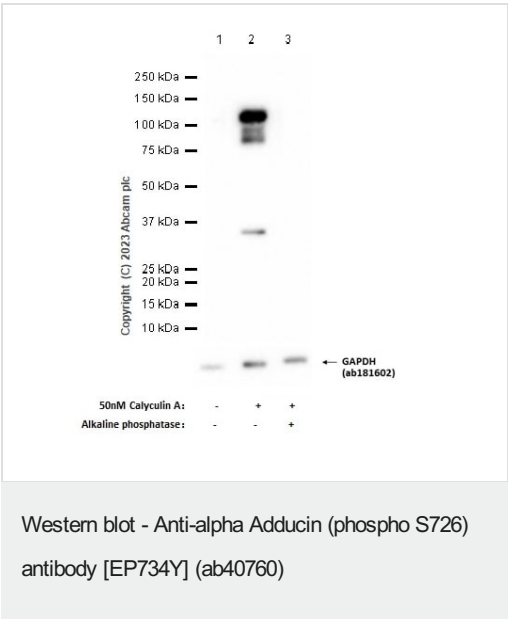
应用	Ab评论	说明
WB		1/5000 - 1/50000. Detects a band of approximately 120 kDa (predicted molecular weight: 120 kDa).
IHC-P		1/250 - 1/500. Perform heat mediated antigen retrieval with citrate buffer pH 6 before commencing with IHC staining protocol.
ICC/IF		1/250 - 1/500.

应用说明 Is unsuitable for Flow Cyt or IP.

靶标

功能	Membrane-cytoskeleton-associated protein that promotes the assembly of the spectrin-actin network. Binds to calmodulin.
组织特异性	Expressed in all tissues. Found in much higher levels in reticulocytes than the beta subunit.
序列相似性	Belongs to the aldolase class II family. Adducin subfamily.
结构域	Each subunit is comprised of three regions: a NH2-terminal protease-resistant globular head region, a short connecting subdomain, and a protease-sensitive tail region.
细胞定位	Cytoplasm > cytoskeleton. Cell membrane.

图片



All lanes : Anti-alpha Adducin (phospho S726) antibody [EP734Y] (ab40760) at 1/1000 dilution

Lane 1 : Untreated HeLa (Human cervix adenocarcinoma epithelial cell) whole cell lysate

Lane 2 : HeLa (Human cervix adenocarcinoma epithelial cell) treated with 50nM Calyculin A for 3 hours whole cell lysate

Lane 3 : HeLa (Human cervix adenocarcinoma epithelial cell) treated with 50nM Calyculin A for 3 hours whole cell lysate 20ug, then the membrane was treated with alkaline phosphatase for 1 hour

Lysates/proteins at 20 µg per lane.

Secondary

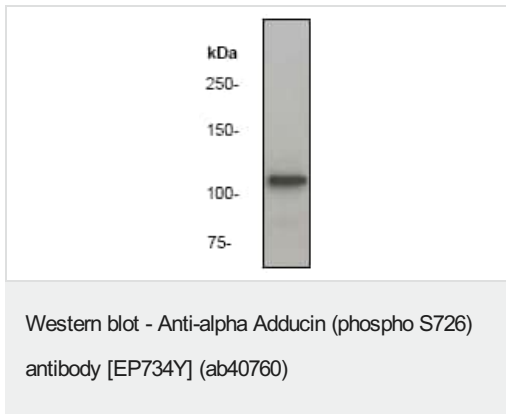
All lanes : Goat Anti-Rabbit IgG H&L (HRP) ([ab97051](#)) at 1/20000 dilution

Predicted band size: 120 kDa

Observed band size: 110 kDa

Exposure time: 7 seconds

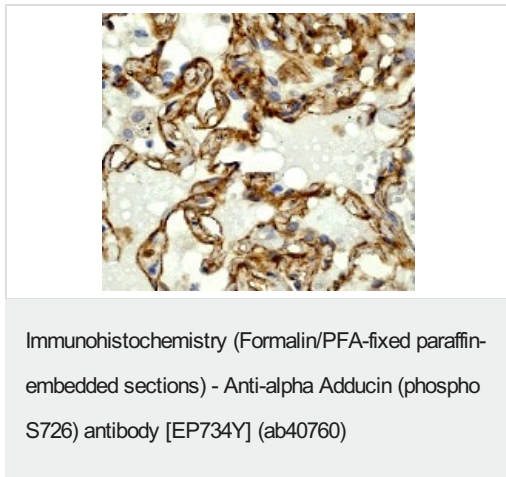
Blocking and diluting buffer: 5% NFDM/TBST



Anti-alpha Adducin (phospho S726) antibody [EP734Y] (ab40760) at 1/50000 dilution + HeLa cell lysate at 10 µg

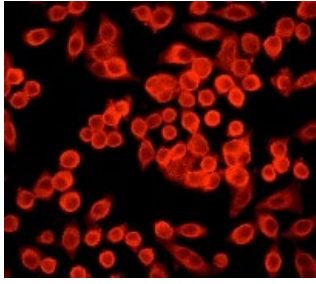
Predicted band size: 120 kDa

Observed band size: 120 kDa



ab40760 (1/250), staining human lung by immunohistochemistry, paraffin embedded tissue.

Perform heat mediated antigen retrieval with citrate buffer pH 6 before commencing with IHC staining protocol.



ab40760, (1/250) staining HeLa cells by immunofluorescence.

Immunocytochemistry/ Immunofluorescence - Anti-
alpha Adducin (phospho S726) antibody [EP734Y]
(ab40760)

Please note: All products are "FOR RESEARCH USE ONLY. NOT FOR USE IN DIAGNOSTIC PROCEDURES"

Our Abpromise to you: Quality guaranteed and expert technical support

- Replacement or refund for products not performing as stated on the datasheet
- Valid for 12 months from date of delivery
- Response to your inquiry within 24 hours
- We provide support in Chinese, English, French, German, Japanese and Spanish
- Extensive multi-media technical resources to help you
- We investigate all quality concerns to ensure our products perform to the highest standards

If the product does not perform as described on this datasheet, we will offer a refund or replacement. For full details of the Abpromise, please visit <https://www.abcam.cn/abpromise> or contact our technical team.

Terms and conditions

- Guarantee only valid for products bought direct from Abcam or one of our authorized distributors