


Anti-alpha Adducin (phospho S436) antibody [EPR2176] ab125081

重组 RabMAb

3 图像

概述

产品名称	Anti-alpha Adducin (phospho S436)抗体[EPR2176]
描述	兔单克隆抗体[EPR2176] to alpha Adducin (phospho S436)
宿主	Rabbit
经测试应用	适用于: WB 不适用于: ICC/IF, IHC-P or IP
种属反应性	与反应: Human 预测可用于: Mouse, Rat 
免疫原	Synthetic peptide. This information is proprietary to Abcam and/or its suppliers.
阳性对照	HeLa cell lysate.
常规说明	This product is a recombinant monoclonal antibody, which offers several advantages including: <ul style="list-style-type: none">- High batch-to-batch consistency and reproducibility- Improved sensitivity and specificity- Long-term security of supply- Animal-free production For more information see here . Our RabMAb [®] technology is a patented hybridoma-based technology for making rabbit monoclonal antibodies. For details on our patents, please refer to RabMAb[®] patents .

性能

形式	Liquid
存放说明	Shipped at 4°C. Store at -20°C. Stable for 12 months at -20°C.
存储溶液	pH: 7.2 Preservative: 0.05% Sodium azide Constituents: 0.1% BSA, 40% Glycerol (glycerin, glycerine), 9.85% Tris glycine, 50% Tissue culture supernatant
纯度	Protein A purified
克隆	单克隆

克隆编号 EPR2176
 同种型 IgG

应用

The Abpromise guarantee Abpromise™承诺保证使用ab125081于以下的经测试应用

“应用说明”部分 下显示的仅为推荐的起始稀释度;实际最佳的稀释度/浓度应由使用者检定。

应用	Ab评论	说明
WB		1/1000 - 1/10000. Detects a band of approximately 130 kDa (predicted molecular weight: 81 kDa).

应用说明 Is unsuitable for ICC/IF, IHC-P or IP.

靶标

功能 Membrane-cytoskeleton-associated protein that promotes the assembly of the spectrin-actin network. Binds to calmodulin.

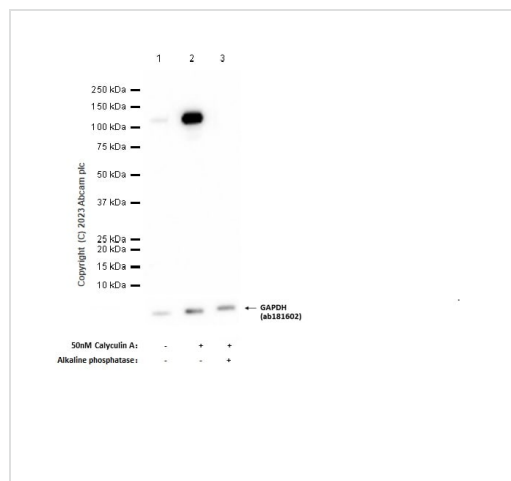
组织特异性 Expressed in all tissues. Found in much higher levels in reticulocytes than the beta subunit.

序列相似性 Belongs to the aldolase class II family. Adducin subfamily.

结构域 Each subunit is comprised of three regions: a NH2-terminal protease-resistant globular head region, a short connecting subdomain, and a protease-sensitive tail region.

细胞定位 Cytoplasm > cytoskeleton. Cell membrane.

图片



Western blot - Anti-alpha Adducin (phospho S436) antibody [EPR2176] (ab125081)

All lanes : Anti-alpha Adducin (phospho S436) antibody [EPR2176] (ab125081) at 1/1000 dilution

Lane 1 : Untreated HeLa (Human cervix adenocarcinoma epithelial cell) whole cell lysate at 20 µg

Lane 2 : HeLa (Human cervix adenocarcinoma epithelial cell) treated with 50nM Calyculin A for 3 hours whole cell lysate at 20 µg

Lane 3 : HeLa (Human cervix adenocarcinoma epithelial cell) treated with 50nM Calyculin A for 3 hours whole cell lysate 20µg, then the membrane was treated with alkaline phosphatase for 1 hour

Secondary

All lanes : Goat Anti-Rabbit IgG H&L (HRP) (**ab97051**) at 1/20000 dilution

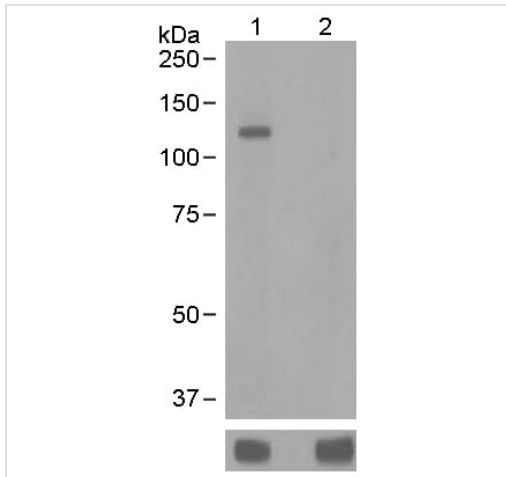
Predicted band size: 81 kDa

Observed band size: 110 kDa

Exposure time: 7 seconds

Blocking and diluting buffer and concentration: 5% NFDN/TBST.

ab181602 was used as a GAPDH loading control.



Western blot - Anti-alpha Adducin (phospho S436) antibody [EPR2176] (ab125081)

All lanes : Anti-alpha Adducin (phospho S436) antibody [EPR2176] (ab125081) at 1/1000 dilution

Lane 1 : HeLa cell lysate, untreated

Lane 2 : HeLa cell lysate, treated with Lambda Phosphatase

Lysates/proteins at 10 µg per lane.





Secondary

All lanes : Goat anti-Rabbit HRP at 1/2000 dilution

Predicted band size: 81 kDa

The bands shown at the bottom of the gel are Beta Tubulin.

Why choose a recombinant antibody?

 <p>Research with confidence Consistent and reproducible results</p>	 <p>Long-term and scalable supply Recombinant technology</p>
 <p>Success from the first experiment Confirmed specificity</p>	 <p>Ethical standards compliant Animal-free production</p>

Anti-alpha Adducin (phospho S436) antibody [EPR2176] (ab125081)

Please note: All products are "FOR RESEARCH USE ONLY. NOT FOR USE IN DIAGNOSTIC PROCEDURES"

Our Abpromise to you: Quality guaranteed and expert technical support

- Replacement or refund for products not performing as stated on the datasheet
- Valid for 12 months from date of delivery
- Response to your inquiry within 24 hours

- We provide support in Chinese, English, French, German, Japanese and Spanish
- Extensive multi-media technical resources to help you
- We investigate all quality concerns to ensure our products perform to the highest standards

If the product does not perform as described on this datasheet, we will offer a refund or replacement. For full details of the Abpromise, please visit <https://www.abcam.cn/abpromise> or contact our technical team.

Terms and conditions

- Guarantee only valid for products bought direct from Abcam or one of our authorized distributors