


Anti-alpha Adducin antibody ab51130

★★★★★ **1 Abreviews** **11 References** **3 图像**

概述

产品名称	Anti-alpha Adducin抗体
描述	兔多克隆抗体to alpha Adducin
宿主	Rabbit
特异性	There are 2 isoforms of alpha adducin on the Uniprot protein database page for mouse. The antibody immunogen has high alignment to isoform 1: Isoform 1 80 kDa 100% Isoform 2 69 kDa 30% The aduccin protein is made up of 4 subunits, including the alpha beta and gamma subunits (according to the Uniprot page), Alignment of the immunogen with the mouse beta adducin: http://www.uniprot.org/uniprot/Q9QYB8 isoform 1 100% isoform 2 30% isoform 3 100% And with the mouse gamma adducin: http://www.uniprot.org/uniprot/Q9QYB5 isoform 1 92% Isoform 2 92% The antibody has not been specifically tested for detection of the other subunits, however according to the high alignments, the antibody is likely to detect several isoforms of these beta and gamma subunits.
经测试应用	适用于: IHC-P, WB, ICC/IF
种属反应性	与反应: Human 预测可用于: Mouse, Rat 
免疫原	Synthesized non-phosphopeptide derived from human alpha Adducin around the phosphorylation site of serine 726 (T-P-S ^P -F-L).
常规说明	<p>The Life Science industry has been in the grips of a reproducibility crisis for a number of years. Abcam is leading the way in addressing this with our range of recombinant monoclonal antibodies and knockout edited cell lines for gold-standard validation. Please check that this product meets your needs before purchasing.</p> <p>If you have any questions, special requirements or concerns, please send us an inquiry and/or contact our Support team ahead of purchase. Recommended alternatives for this product can be found below, along with publications, customer reviews and Q&As</p>

性能

形式	Liquid
存放说明	Shipped at 4°C. Store at -20°C. Stable for 12 months at -20°C.
存储溶液	pH: 7.40 Preservative: 0.02% Sodium azide Constituents: 0.87% Sodium chloride, 50% Glycerol (glycerin, glycerine), PBS

	Without Mg+2 and Ca+2
纯度	Immunogen affinity purified
克隆	多克隆
同种型	IgG

应用

The Abpromise guarantee **Abpromise™**承诺保证使用ab51130于以下的经测试应用

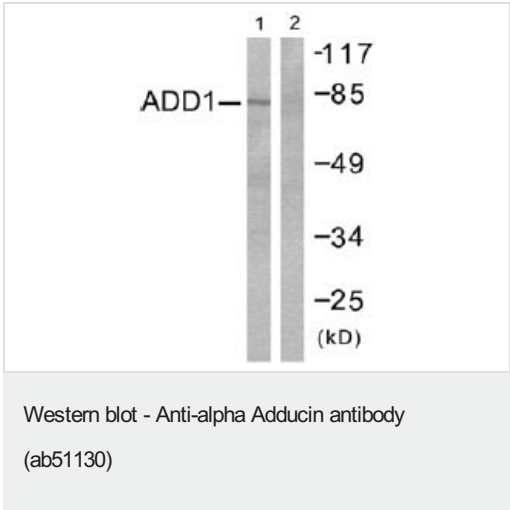
“应用说明”部分 下显示的仅为推荐的起始稀释度;实际最佳的稀释度/浓度应由使用者检定。

应用	Ab评论	说明
IHC-P		Use at an assay dependent concentration.
WB		1/500 - 1/1000. Detects a band of approximately 81 kDa (predicted molecular weight: 81 kDa).
ICC/IF	★★★★★ (1)	Use a concentration of 1 - 5 µg/ml.

靶标

功能	Membrane-cytoskeleton-associated protein that promotes the assembly of the spectrin-actin network. Binds to calmodulin.
组织特异性	Expressed in all tissues. Found in much higher levels in reticulocytes than the beta subunit.
序列相似性	Belongs to the aldolase class II family. Adducin subfamily.
结构域	Each subunit is comprised of three regions: a NH2-terminal protease-resistant globular head region, a short connecting subdomain, and a protease-sensitive tail region.
细胞定位	Cytoplasm > cytoskeleton. Cell membrane.

图片

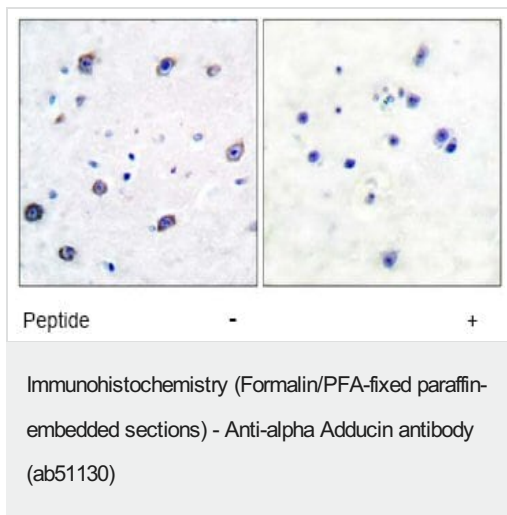


All lanes : Anti-alpha Adducin antibody (ab51130)

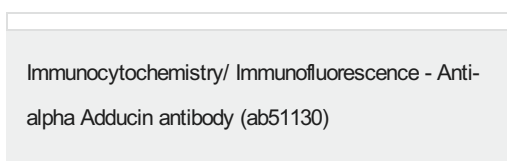
Lane 1 : Extracts from Hela cells treated with Forskolin (40nM, 30min) with no peptide

Lane 2 : Extracts from Hela cells treated with Forskolin (40nM, 30min) with with immunising peptide

Predicted band size: 81 kDa



This image shows paraffin-embedded human brain tissue stained with ab51130 at a dilution of 1/100. Right hand image: tissue treated with immunising peptide; left hand image: untreated tissue



ICC/IF image of ab51130 stained Hek293 cells. The cells were 100% methanol fixed (5 min) and then incubated in 1%BSA / 10% normal goat serum / 0.3M glycine in 0.1% PBS-Tween for 1h to permeabilise the cells and block non-specific protein-protein interactions. The cells were then incubated with the antibody (ab51130, 1µg/ml) overnight at +4°C. The secondary antibody (green) was Alexa Fluor® 488 goat anti-rabbit IgG (H+L) used at a 1/1000 dilution for 1h. Alexa Fluor® 594 WGA was used to label plasma membranes (red) at a 1/200 dilution for 1h. DAPI was used to stain the cell nuclei (blue) at a concentration of 1.43µM.

Please note: All products are "FOR RESEARCH USE ONLY. NOT FOR USE IN DIAGNOSTIC PROCEDURES"

Our Abpromise to you: Quality guaranteed and expert technical support

- Replacement or refund for products not performing as stated on the datasheet
- Valid for 12 months from date of delivery
- Response to your inquiry within 24 hours
- We provide support in Chinese, English, French, German, Japanese and Spanish
- Extensive multi-media technical resources to help you
- We investigate all quality concerns to ensure our products perform to the highest standards

If the product does not perform as described on this datasheet, we will offer a refund or replacement. For full details of the Abpromise, please visit <https://www.abcam.cn/abpromise> or contact our technical team.

Terms and conditions

- Guarantee only valid for products bought direct from Abcam or one of our authorized distributors