

### Anti-alpha Actinin/ACTN1 antibody [AT6/172] ab18061

★★★★★ [9 Abreviews](#) [38 References](#) [2 图像](#)

#### 概述

产品名称	Anti-alpha Actinin/ACTN1抗体[AT6/172]
描述	小鼠单克隆抗体[AT6/172] to alpha Actinin/ACTN1
宿主	Mouse
特异性	<p>Recognizes and is specific for human alpha Actinin 1/ACTN1 isoform (non-muscle) at 100 kDa.</p> <p>This antibody may recognize other isoforms of alpha-actinin (1-4). There is no specific epitope information available.</p> <p>The clone number has been updated from (0.T.02) to (AT6/172) both clone numbers name the same antibody clone.</p>
经测试应用	<p><b>适用于:</b> ICC</p> <p><b>不适用于:</b> IP</p>
种属反应性	<b>与反应:</b> Human
免疫原	<p>Full length protein corresponding to Human alpha Actinin/ACTN1.</p> <p>Database link: <a href="#">P12814</a></p>
阳性对照	ICC: HeLa cells, ioSkeletal Myocytes - Human iPSC-Derived Skeletal Myocytes ( <a href="#">ab277612</a> ).
常规说明	<p>The Life Science industry has been in the grips of a reproducibility crisis for a number of years. Abcam is leading the way in addressing this with our range of recombinant monoclonal antibodies and knockout edited cell lines for gold-standard validation. Please check that this product meets your needs before purchasing.</p> <p>If you have any questions, special requirements or concerns, please send us an inquiry and/or contact our Support team ahead of purchase. Recommended alternatives for this product can be found below, along with publications, customer reviews and Q&amp;As</p>

#### 性能

形式	Liquid
存放说明	Shipped at 4°C. Add glycerol to a final volume of 50% for extra stability and aliquot. Store at -20°C. Avoid freeze / thaw cycle.
存储溶液	<p>pH: 7.60</p> <p>Preservative: 0.09% Sodium azide</p> <p>Constituent: PBS</p>
纯度	Protein A purified

克隆	单克隆
克隆编号	AT6/172
同种型	IgG1

## 应用

**The Abpromise guarantee**      **Abpromise™**承诺保证使用ab18061于以下的经测试应用

“应用说明”部分下显示的仅为推荐的起始稀释度;实际最佳的稀释度/浓度应由使用者检定。

应用	Ab评论	说明
ICC		Use a concentration of 1 - 5 µg/ml.

**应用说明** Is unsuitable for IP.

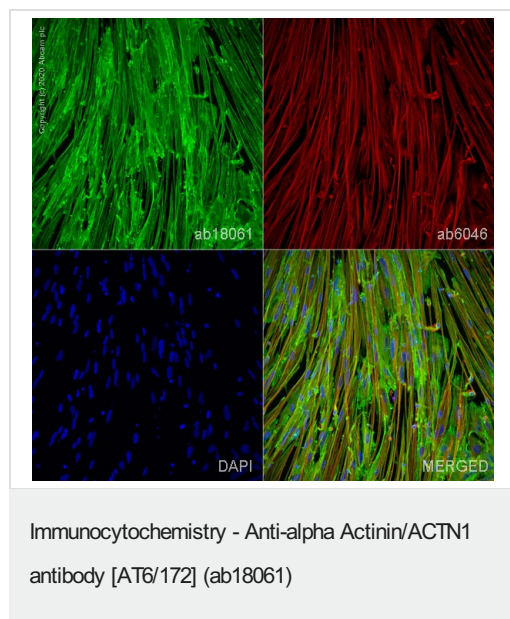
## 靶标

**功能** F-actin cross-linking protein which is thought to anchor actin to a variety of intracellular structures.  
This is a bundling protein.

<b>序列相似性</b>	<p>Belongs to the alpha-actinin family.</p> <p>Contains 1 actin-binding domain.</p> <p>Contains 2 CH (calponin-homology) domains.</p> <p>Contains 2 EF-hand domains.</p> <p>Contains 4 spectrin repeats.</p>
--------------	--

**细胞定位** Cytoplasm > cytoskeleton. Cytoplasm > myofibril > sarcomere > Z line. Colocalizes with MYOZ2 and PPP3CA at the Z-line of heart and skeletal muscle.

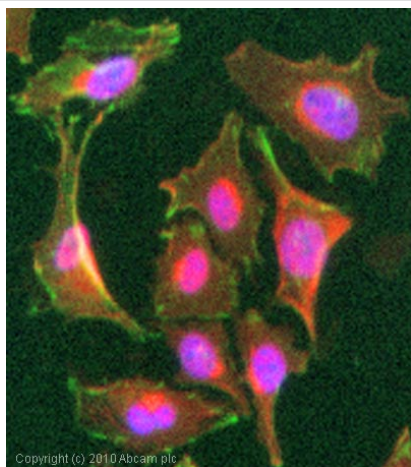
图片



Immunofluorescence staining of Actinin/ACTN1 using ab18061 in  
ioSkeletal Myocytes - Human iPSC-Derived Skeletal Myocytes  
(**ab277612**), which were differentiated for 10 days post induction.

The cells were fixed with 100% MeOH (5 min) and then blocked with 1% BSA/10% normal goat serum/0.3M glycine in 0.1% PBS-Tween for 1h. The cells were then incubated overnight at +4°C with ab18061 at 5 µg/mL and **ab6046**, rabbit polyclonal to beta Tubulin, at 1/1000 dilution. Cells were then incubated with **ab150117**, Goat Anti-Mouse IgG H&L (Alexa Fluor® 488) preadsorbed at 1/1000 dilution (shown in green) and **ab150088**, Goat Anti-Rabbit IgG H&L (Alexa Fluor® 594) preadsorbed at 1/1000 dilution (shown in red). Nuclear DNA was labelled with DAPI (shown in blue).

Image was acquired with a high-content analyser (Operetta CLS, Perkin Elmer) and a maximum intensity projection of confocal sections is shown. Gamma is adjusted to 1.5 in all channels.



Immunocytochemistry - Anti-alpha Actinin/ACTN1 antibody [AT6/172] (ab18061)

ICC/IF image of ab18061 stained HeLa (Human epithelial cell line from cervix adenocarcinoma) cells. The cells were fixed in 4% formaldehyde for 10 minutes and then incubated in 1% BSA / 10% normal goat serum / 0.3 M glycine in 0.1% PBS-Tween for 1 hour to permeabilize the cells and block non-specific protein-protein interactions. The cells were then incubated with the antibody (ab18061, 1 µg/ml) overnight at +4°C. The secondary antibody (green) was Alexa Fluor® 488 goat anti-mouse IgG (H+L) used at a 1/1000 dilution for 1 hour. Alexa Fluor® 594 WGA was used to label plasma membranes (red) at a 1/200 dilution for 1 hour. DAPI was used to stain the cell nuclei (blue) at a concentration of 1.43 µM.

**Please note:** All products are "FOR RESEARCH USE ONLY. NOT FOR USE IN DIAGNOSTIC PROCEDURES"

### Our Abpromise to you: Quality guaranteed and expert technical support

---

- Replacement or refund for products not performing as stated on the datasheet
- Valid for 12 months from date of delivery
- Response to your inquiry within 24 hours
- We provide support in Chinese, English, French, German, Japanese and Spanish
- Extensive multi-media technical resources to help you
- We investigate all quality concerns to ensure our products perform to the highest standards

If the product does not perform as described on this datasheet, we will offer a refund or replacement. For full details of the Abpromise, please visit <https://www.abcam.cn/abpromise> or contact our technical team.

### Terms and conditions

---

- Guarantee only valid for products bought direct from Abcam or one of our authorized distributors