

Anti-alpha A + alpha B Crystallin antibody ab63998

1 图像

概述

产品名称	Anti-alpha A + alpha B Crystallin抗体
描述	兔多克隆抗体to alpha A + alpha B Crystallin
宿主	Rabbit
经测试应用	适用于: IHC-P
种属反应性	与反应: Human
免疫原	Full length protein corresponding to Alpha A + alpha B Crystallin. Bovine alpha/beta crystallin which has greater than 80% homology with human alpha/beta crystallin.
常规说明	<p>The Life Science industry has been in the grips of a reproducibility crisis for a number of years. Abcam is leading the way in addressing this with our range of recombinant monoclonal antibodies and knockout edited cell lines for gold-standard validation. Please check that this product meets your needs before purchasing.</p> <p>If you have any questions, special requirements or concerns, please send us an inquiry and/or contact our Support team ahead of purchase. Recommended alternatives for this product can be found below, along with publications, customer reviews and Q&As</p>

性能

形式	Liquid
存放说明	Shipped at 4°C. Store at +4°C short term (1-2 weeks). Upon delivery aliquot. Store at -20°C or -80°C. Avoid freeze / thaw cycle.
存储溶液	Preservative: 0.02% Thimerosal (merthiolate) Constituent: Whole serum
纯度	Whole antiserum
克隆	多克隆
同种型	IgG

应用

The Abpromise guarantee **Abpromise™**承诺保证使用ab63998于以下的经测试应用

“应用说明”部分 下显示的仅为推荐的起始稀释度;实际最佳的稀释度/浓度应由使用者检定。

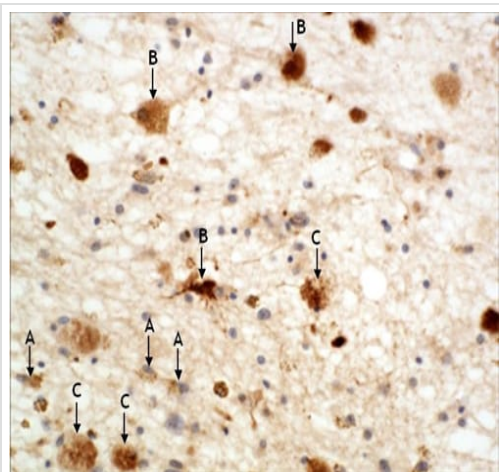
应用	Ab评论	说明
IHC-P		1/1000 - 1/4000.

靶标

相关性 Crystallins are separated into two classes: taxon specific, or enzyme, and ubiquitous. The latter class constitutes the major proteins of vertebrate eye lens and maintains the transparency and refractive index of the lens. Alpha crystallins are composed of two gene products: alpha A and alpha B, for acidic and basic, respectively. Alpha crystallins can be induced by heat shock and are members of the small heat shock protein family. They act as molecular chaperones although they do not renature proteins and release them in the fashion of a true chaperone; instead they hold them in large soluble aggregates. Two additional functions of alpha crystallins are an autokinase activity and participation in the intracellular architecture.

细胞定位 Cytoplasmic

图片



Ab63998 (1:2000) staining of human brain tissue showing $\alpha\beta$ crystallin accumulation in Rosenthal fibres. Secondary antibody biotinylated Goat anti-rabbit (1/2000). (A) Shows the early stages of $\alpha\beta$ crystallin accumulation in astrocytes, (B) astrocyte begins to hypertrophy with $\alpha\beta$ crystallin accumulation, (C) the astrocyte begins to further hypertrophy and cell structure is lost.

Immunohistochemistry (Formalin/PFA-fixed paraffin-embedded sections) - Anti-alpha A + alpha B Crystallin antibody (ab63998)

Please note: All products are "FOR RESEARCH USE ONLY. NOT FOR USE IN DIAGNOSTIC PROCEDURES"

Our Abpromise to you: Quality guaranteed and expert technical support

- Replacement or refund for products not performing as stated on the datasheet
- Valid for 12 months from date of delivery
- Response to your inquiry within 24 hours
- We provide support in Chinese, English, French, German, Japanese and Spanish

- Extensive multi-media technical resources to help you
- We investigate all quality concerns to ensure our products perform to the highest standards

If the product does not perform as described on this datasheet, we will offer a refund or replacement. For full details of the Abpromise, please visit <https://www.abcam.cn/abpromise> or contact our technical team.

Terms and conditions

- Guarantee only valid for products bought direct from Abcam or one of our authorized distributors