

# Anti-alpha 2 Macroglobulin antibody [EPR4432] ab109422

重组 RabMAb

### 3 图像

#### 概述

产品名称	Anti-alpha 2 Macroglobulin抗体[EPR4432]
描述	兔单克隆抗体[EPR4432] to alpha 2 Macroglobulin
宿主	Rabbit
经测试应用	<b>适用于:</b> WB, IHC-P <b>不适用于:</b> Flow Cyt, ICC/IF or IP
种属反应性	<b>与反应:</b> Human
免疫原	Synthetic peptide. This information is proprietary to Abcam and/or its suppliers.
阳性对照	Human plasma lysate; Human liver tissue
常规说明	<p>This product is a recombinant monoclonal antibody, which offers several advantages including:</p> <ul style="list-style-type: none"><li>- High batch-to-batch consistency and reproducibility</li><li>- Improved sensitivity and specificity</li><li>- Long-term security of supply</li><li>- Animal-free production</li></ul> <p>For more information <a href="#">see here</a>.</p> <p>Our RabMAb<sup>®</sup> technology is a patented hybridoma-based technology for making rabbit monoclonal antibodies. For details on our patents, please refer to <a href="#">RabMAb<sup>®</sup> patents</a>.</p> <p>Mouse, Rat: We have preliminary internal testing data to indicate this antibody may not react with these species. Please contact us for more information.</p>

#### 性能

形式	Liquid
存放说明	Shipped at 4°C. Store at -20°C. Stable for 12 months at -20°C.
存储溶液	pH: 7.20 Preservative: 0.05% Sodium azide Constituents: 0.1% BSA, 40% Glycerol (glycerin, glycerine), 9.85% Tris glycine, 50% Tissue culture supernatant
纯度	Protein A purified
克隆	单克隆

**克隆编号**                               EPR4432

**同种型**                                    IgG

**应用**

**The Abpromise guarantee**           **Abpromise™** 承诺保证使用ab109422于以下的经测试应用

“应用说明”部分 下显示的仅为推荐的起始稀释度；实际最佳的稀释度/浓度应由使用者检定。

应用	Ab评论	说明
WB		1/1000 - 1/10000. Predicted molecular weight: 163 kDa.
IHC-P		1/500 - 1/1000. Perform heat mediated antigen retrieval with citrate buffer pH 6 before commencing with IHC staining protocol.

**应用说明**                                   Is unsuitable for Flow Cyt,ICC/IF or IP.

**靶标**

**功能**                                        Is able to inhibit all four classes of proteinases by a unique 'trapping' mechanism. This protein has a peptide stretch, called the 'bait region' which contains specific cleavage sites for different proteinases. When a proteinase cleaves the bait region, a conformational change is induced in the protein which traps the proteinase. The entrapped enzyme remains active against low molecular weight substrates (activity against high molecular weight substrates is greatly reduced). Following cleavage in the bait region a thioester bond is hydrolyzed and mediates the covalent binding of the protein to the proteinase.

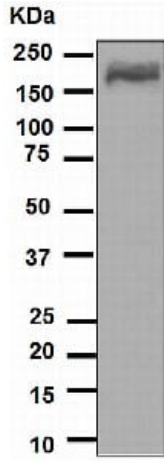
**组织特异性**                                Secreted in plasma.

**序列相似性**                                Belongs to the protease inhibitor I39 (alpha-2-macroglobulin) family.

**发展阶段**                                    Contrary to the rat protein, which is an acute phase protein, this protein is always present at high levels in circulation.

**细胞定位**                                    Secreted.

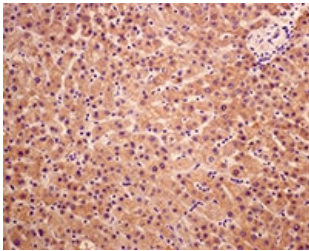
**图片**



Western blot - Anti-alpha 2 Macroglobulin antibody [EPR4432] (ab109422)

Anti-alpha 2 Macroglobulin antibody [EPR4432] (ab109422) at 1/1000 dilution + Human plasma lysate at 10 µg

**Predicted band size:** 163 kDa



Immunohistochemistry (Formalin/PFA-fixed paraffin-embedded sections) - Anti-alpha 2 Macroglobulin antibody [EPR4432] (ab109422)

ab109422, at 1/500 dilution, staining alpha 2 Macroglobulin in paraffin-embedded Human liver by Immunohistochemistry.

Perform heat mediated antigen retrieval with citrate buffer pH 6 before commencing with IHC staining protocol.

Why choose a recombinant antibody?

 <p><b>Research with confidence</b> Consistent and reproducible results</p>	 <p><b>Long-term and scalable supply</b> Recombinant technology</p>
 <p><b>Success from the first experiment</b> Confirmed specificity</p>	 <p><b>Ethical standards compliant</b> Animal-free production</p>

Anti-alpha 2 Macroglobulin antibody [EPR4432] (ab109422)

**Please note:** All products are "FOR RESEARCH USE ONLY. NOT FOR USE IN DIAGNOSTIC PROCEDURES"

## **Our Abpromise to you: Quality guaranteed and expert technical support**

---

- Replacement or refund for products not performing as stated on the datasheet
- Valid for 12 months from date of delivery
- Response to your inquiry within 24 hours
  
- We provide support in Chinese, English, French, German, Japanese and Spanish
- Extensive multi-media technical resources to help you
- We investigate all quality concerns to ensure our products perform to the highest standards

If the product does not perform as described on this datasheet, we will offer a refund or replacement. For full details of the Abpromise, please visit <https://www.abcam.cn/abpromise> or contact our technical team.

## **Terms and conditions**

---

- Guarantee only valid for products bought direct from Abcam or one of our authorized distributors