

### Anti-alpha 1 Spectrin antibody [17C7] ab11751

★★★★★ [3 Abreviews](#) [13 References](#) [2 图像](#)

#### 概述

产品名称	Anti-alpha 1 Spectrin抗体[17C7]
描述	小鼠单克隆抗体[17C7] to alpha 1 Spectrin
宿主	Mouse
特异性	ab11751 is developed against the alpha I spectrin SH3 domain. It does not crossreact with alpha II (nonerythroid) spectrin SH3 domain or recombinant human fodrin SH3 domain. In NIH 3T3 cells, ab11751 reacts with a 200 kDa protein which is a candidate marker of endocytic vesicles called macropinosomes.
经测试应用	<b>适用于:</b> ELISA, IHC-Fr, ICC/IF, WB
种属反应性	<b>与反应:</b> Mouse, Rat, Human
免疫原	Recombinant alpha I spectrin (erythroid spectrin) SH3 domain.
阳性对照	Erythroid spectrin in red blood cells and cerebellum.
常规说明	<p>The Life Science industry has been in the grips of a reproducibility crisis for a number of years. Abcam is leading the way in addressing this with our range of recombinant monoclonal antibodies and knockout edited cell lines for gold-standard validation. Please check that this product meets your needs before purchasing.</p> <p>If you have any questions, special requirements or concerns, please send us an inquiry and/or contact our Support team ahead of purchase. Recommended alternatives for this product can be found below, along with publications, customer reviews and Q&amp;As</p>

#### 性能

形式	Liquid
存放说明	Shipped at 4°C. Upon delivery aliquot and store at -20°C. Avoid freeze / thaw cycles.
存储溶液	Constituent: PBS
纯度	Affinity purified
纯化说明	Purified from tissue culture supernatant.
克隆	单克隆
克隆编号	17C7
同种型	IgG1
轻链类型	kappa

## 应用

**The Abpromise guarantee**      **Abpromise™** 承诺保证使用 ab11751 于以下的经测试应用

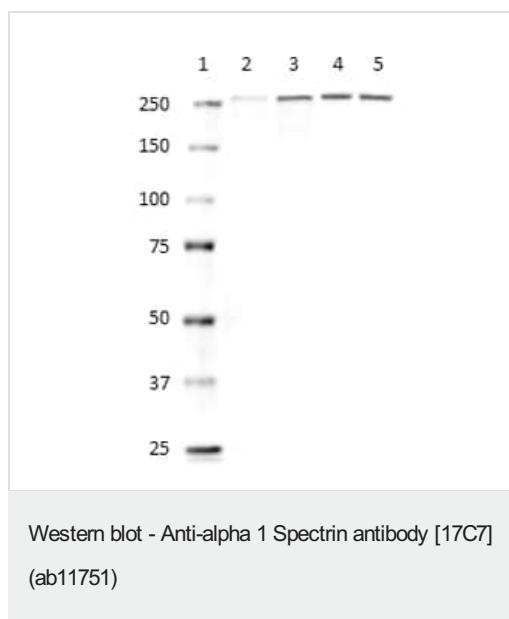
“应用说明”部分 下显示的仅为推荐的起始稀释度;实际最佳的稀释度/浓度应由使用者检定。

应用	Ab 评论	说明
ELISA		Use at an assay dependent concentration.
IHC-Fr		Use at an assay dependent concentration.
ICC/IF	★★★★★ (2)	Use at an assay dependent concentration. See Abreview.
WB	★★★★☆ (1)	Use at an assay dependent concentration. Predicted molecular weight: 280 kDa.

## 靶标

功能	Spectrin is the major constituent of the cytoskeletal network underlying the erythrocyte plasma membrane. It associates with band 4.1 and actin to form the cytoskeletal superstructure of the erythrocyte plasma membrane.
疾病相关	<p>Defects in SPTA1 are the cause of elliptocytosis type 2 (EL2) [MIM:130600]. EL2 is a Rhesus-unlinked form of hereditary elliptocytosis, a genetically heterogeneous, autosomal dominant hematologic disorder. It is characterized by variable hemolytic anemia and elliptical or oval red cell shape.</p> <p>Defects in SPTA1 are a cause of hereditary pyropoikilocytosis (HPP) [MIM:266140]. HPP is an autosomal recessive disorder characterized by hemolytic anemia, microspherocytosis, poikilocytosis, and an unusual thermal sensitivity of red cells.</p> <p>Defects in SPTA1 are the cause of spherocytosis type 3 (SPH3) [MIM:270970]; also known as hereditary spherocytosis type 3 (HS3). Spherocytosis is a hematologic disorder leading to chronic hemolytic anemia and characterized by numerous abnormally shaped erythrocytes which are generally spheroidal. SPH3 is characterized by severe hemolytic anemia. Inheritance is autosomal recessive.</p>
序列相似性	<p>Belongs to the spectrin family.</p> <p>Contains 3 EF-hand domains.</p> <p>Contains 1 SH3 domain.</p> <p>Contains 21 spectrin repeats.</p>
细胞定位	Cytoplasm > cytoskeleton. Cytoplasm > cell cortex.

## 图片



**All lanes :** Anti-alpha 1 Spectrin antibody [17C7] (ab11751) at 1 µg/ml

**Lane 1 :** MW marker

**Lane 2 :** Human Lung lysate

**Lane 3 :** Mouse Lung lysate

**Lane 4 :** Rat Brain lysate

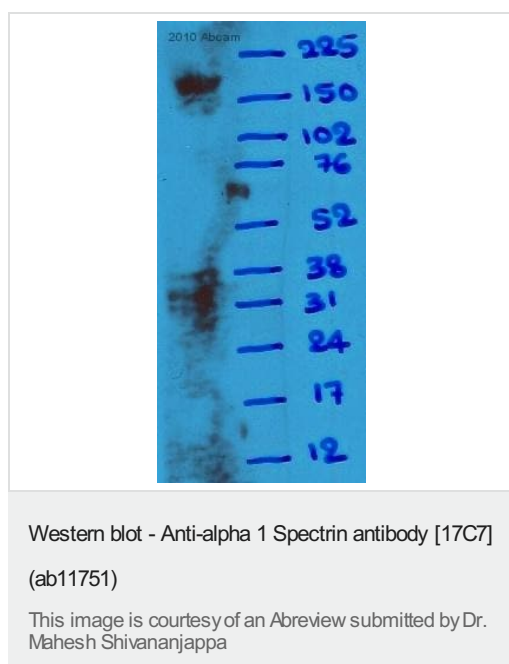
**Lane 5 :** Human Kidney lysate

Lysates/proteins at 50 µg per lane.

### Secondary

**All lanes :** HRP labeled goat anti-mouse IgG

**Predicted band size:** 280 kDa



Anti-alpha 1 Spectrin antibody [17C7] (ab11751) at 1/1000 dilution  
+ Human Platelet whole cell lysate at 25 µg

### Secondary

HRP-conjugated Goat Anti-mouse IgG at 1/10000 dilution

Developed using the ECL technique.

Performed under reducing conditions.

**Predicted band size:** 280 kDa

**Additional bands at:** 200 kDa (possible cleavage fragment)

**Exposure time:** 1 hour

**Please note:** All products are "FOR RESEARCH USE ONLY. NOT FOR USE IN DIAGNOSTIC PROCEDURES"

### Our Abpromise to you: Quality guaranteed and expert technical support

- Replacement or refund for products not performing as stated on the datasheet
- Valid for 12 months from date of delivery

- Response to your inquiry within 24 hours
- We provide support in Chinese, English, French, German, Japanese and Spanish
- Extensive multi-media technical resources to help you
- We investigate all quality concerns to ensure our products perform to the highest standards

If the product does not perform as described on this datasheet, we will offer a refund or replacement. For full details of the Abpromise, please visit <https://www.abcam.cn/abpromise> or contact our technical team.

#### **Terms and conditions**

---

- Guarantee only valid for products bought direct from Abcam or one of our authorized distributors